

# Simplicité pour la Science



# A propose d'ATOM

Atom Scientific est un fabricant spécialisé en réactifs de diagnostics avec une expérience de plus de 50 ans dans la livraison de produits de qualité exceptionnelle à l'industrie des sciences de la vie à travers le monde.

## Histoire

Etabli en 2009, ATOM Scientific est un fabricant spécialisé de réactifs et de colorants pour les laboratoires de sciences de la vie.

Face à la croissance, des produits complémentaires ont été intégrés à la famille de produits pour répondre à la demande des clients

Nos objectifs sont:

- **La Qualité**
- **Le Service**
- **Le Rapport qualité/prix**

## Qualité

Le Système de Gestion Qualité (QMS) est certifié **ISO9001:2008**

L'équipe QA/Compliance s'assure que les produits sont entièrement vérifiables de la matière première au produit fini

Les scientifiques expérimentés du laboratoire d'essais en sciences de la vie s'assurent que les produits sont conformes aux exigences de la norme ISO1589, pour faire gagner du temps et des ressources pour nos clients, tout en assurant une qualité constante

## Usine

En 2014, ATOM a ouvert un site unique à Manchester afin d'augmenter sa capacité opérationnelle, dans le respect des législations actuelles et futures.

Spécialisé en produits finis sous forme de pack de 10ml/10gm et 25L/25Kg avec la capacité de produire des batch de 500 à 5000 ml

Atom peut répondre à toutes vos demandes.

Tous les produits chimiques et réactifs proposés par ATOM sont fabriqués, emballés et distribués à Manchester

## Nous contacter

 01 34 94 20 45

 sales@techinterlab.fr

 01 34 87 76 49

 www.atomscientific.com

## Commandes

Passer commande par email ou par fax



Pour passer commande, merci de nous envoyer une demande de prix en précisant l'adresse de livraison et l'adresse de facturation et les informations produits comme indiqué ci-dessous :

- Code Produit
- Nom Produit
- Conditionnement
- Qté
- Prix

## Technique

Informations techniques disponibles sur le site ATOM pour être téléchargées :

- MSDS (MSDS)
- Certificat de Conformité
- Certificat d'Analyse
- Protocoles

Pour toutes vos questions :

 sales@techinterlab.fr



## Conformes ISO15189

UK NEQAS CPT Participation/Scores	4-5
Colorations de routine	6-11
Colorations spéciales	12-72
Produits chimiques	73-77

Notre philosophie est de rendre la science simple, nous livrons des produits validés de haute qualité, dans un emballage adapté aux besoins, expédiés en toute sécurité, à des prix compétitifs, où vous les voulez, quand vous en avez besoin



# UK NEQAS CPT

## Les Scores ATOM

Avec l'introduction de la norme ISO15189, en 2017, Atom Scientific a pris la décision d'entreprendre un examen complet de la qualité de tous ses kits de colorations spéciales pour s'assurer que nous étions en mesure d'offrir à nos clients des produits pré-validés pour faciliter leur conformité ISO15189.

Depuis 2018, ATOM Scientific participe au programme britannique NEQAS CPT (Cellular Pathology Technique) en tant que validation indépendante de ses résultats de tests internes en laboratoire.

A propos de UK NEQAS CPT...

UK NEQAS CPT offre un programme standardisé accrédité UKAS, fournissant aux participants une méthode de test de compétence pour évaluer les pratiques de laboratoire pour guider et assurer les meilleures pratiques et des résultats de référence.

À l'aide de matériel validé de qualité constante pour une gamme, les participants peuvent démontrer leur qualité et leur rendement pour maintenir des normes élevées de pratique en laboratoire. Dans le cadre de chaque évaluation du CPT NEQAS au Royaume-Uni, les scores des analyses sont audités afin de fournir une rétroaction approfondie pour aider à l'amélioration continue au sein des organisations, fournir une aide d'expert pour identifier les problèmes et donner accès à une expertise de dépannage. Les notes varient de 0 à 10 et sont fondées sur un certain nombre de critères.

**UK NEQAS CPT décrit un score de 9 ou 10 pour montrer une excellente démonstration appropriée des résultats attendus de coloration, et un niveau élevé de qualité.**

Atom Scientific est fier de publier les scores obtenus par leurs kits.

Kit de coloration	Score	Date
Masson Trichrome	10	Jan 19
Reticuline	10	May 18
Masson Fontana	10	May 18
Luxol Fast Blue	10	2017
H&E	10	Jul 19
ZN	10	Jul 19
Perls	10	Sep 19
Orceine pour CAP	9	Nov 18
Bleu Alcian	9	May 19
Rouge Congo (Highman)	9	Jul 18
Orceine pour HbsAg	9	May 19
DPAS	9	Sept 18
EVG (Miller)	9	Nov 18
ABPAS	9	Mar 19
Gram (Neutral Red)	9	Jul 19
Weigerts Haematoxylin Van Gieson	9	Jul 19

# Kit de coloration Orceine

## UK NEQAS CPT Notes et commentaires

Selon le rapport du CPT de la NEQAS du Royaume-Uni publié le 23 novembre 2018 concernant les récentes soumissions pour la PAC, il y a malheureusement eu une augmentation significative du nombre de techniques de Rhodanine soumises. On a fait remarquer que cette technique n'est pas appropriée, car elle ne démontre que les dépôts libres de cuivre et non le cuivre lié aux protéines. Dans le rapport UK NEQAS CPT a dirigé les participants à une référence dans le Journal of Clinical Pathology (J Clinpath, 1978,31 784-790) qui soutient sans équivoque l'utilisation de l'orceïne et non de la rhodanine pour la démonstration de la protéine associée au cuivre.

Atom Scientific propose une teinture Orcein prête à l'emploi qui a été notée par UK NEQAS CPT comme suit :

Kit de coloration	Score	Date
Orceine pour CAP (Copper Associated Protein)	9	Nov 18
Orceine pour HBsAg (Hepatitis B Surface Antigen)	9	May 18

9/10  
UK  
NEQAS



**ATOM**  
SCIENTIFIC



# Colorations de routine

Atom Scientific propose une sélection complète de solutions d'hématoxylines de routine spécialisées et optimisées pour l'histologie, la cytologie et l'immunohistochimie. Avec plus de 50 ans d'expérience de la fabrication avec QC interne et la participation au système NEQAS du Royaume-Uni, Atom Scientific est en mesure de vraiment établir un étalon-or dans l'interprétation diagnostique cohérente

## Hématoxylines

Les solutions d'hématoxyline suivantes utilisent un composé d'aluminium tel que le sulfate de potassium (alun potassique) comme mordant. Les noyaux auront besoin d'un réactif alcalin ou bleuissant pour changer la couleur d'un rouge à un bleu-noir. Ces solutions d'hématoxyline peuvent être utilisées de façon régressive (sur-teintée et différenciation requise) ou progressivement (sous-teintées pour que le fond ne soit pas teinté)

### Hématoxyline Harris

Une des hématoxylines d'alun de routine les plus courantes, cette formulation est similaire à celle de Delafield mais la maturation chimique permet une utilisation immédiate. Généralement utilisée de façon régressive, mais peut être utilisée de façon progressive en cytologie



Code	Pack
RRSP67-D	500ml
RRSP67-E	1L
RRSP67-F	2.5L
RRSP67-G	5L

### Hématoxyline Harris Acidified

Une version acidifiée de l'hématoxyline de Harris. L'hématoxyline est affinée avec de l'acide acétique pour une coloration nucléaire intense accrue



Code	Pack
RRSP68-D	500ml
RRSP68-E	1L
RRSP68-F	2.5L
RRSP68-G	5L

### Hémalum Mayer

Cette formulation peut être utilisée de façon progressive et régressive. Elle ne colore pas les mucopolysaccharides, donc est couramment utilisé comme un contre-colorant pour la démonstration du glycogène



Code	Pack
RRSP60-D	500ml
RRSP60-E	1L
RRSP60-F	2.5L
RRSP60-G	5L

### Hématoxyline Gill (Formula I)

Gill I est une hématoxyline d'alun progressive recommandée pour la cytologie pour son taux bas d'hématoxyline. Cela permet un meilleur contrôle de la coloration de la chromatine.



Code	Pack
RRSP64-D	500ml
RRSP64-E	1L
RRSP64-F	2.5L
RRSP64-G	5L

### Hématoxyline Gill (Formula II)

Double Strength Gill II est une coloration progressive et peut être utilisée la cytologie et l'histologie. L'hématoxyline de force moyenne permet une coloration plus contrôlée de la chromatine. Egalement un contre-colorant idéal pour immunohistochimie



Code	Pack
RRSP65-D	500ml
RRSP65-E	1L
RRSP65-F	2.5L
RRSP65-G	5L

### Hématoxyline Gill (Formula III)

Triple Strength Gill III est une coloration progressive et surtout utilisée en histologie où une coloration plus sombre du noyau est souhaitée



Code	Pack
RRSP66-D	500ml
RRSP66-E	1L
RRSP66-F	2.5L
RRSP66-G	5L

# Colorations de routine

### Hématoxyline Carazzi (Double Strength)

Une hématoxyline à double concentration couramment utilisée dans le protocole de coloration rapide H&E. Il colore sélectivement la chromatine nucléaire sans affecter la structure cytoplasmique



Code	Pack
RRSP61-D	500ml
RRSP61-E	1L
RRSP61-F	2.5L

### Hématoxyline Delafield

Une solution de travail d'Haematoxylin Delafield, un hématoxyline alun idéal pour la coloration nucléaire



Code	Pack
RRSP62-D	500ml
RRSP62-E	1L
RRSP62-F	2.5L

### Hématoxyline Ehrlich

Une hématoxyline d'alun saturée régressive solution nécessitant une différenciation. Cette hématoxyline colorera également les mucopolysaccharides, mais le processus de coloration est plus long que les autres hématoxylines, ce qui nécessite jusqu'à 30 minutes.



Code	Pack
RRSP63-D	500ml
RRSP63-E	1L
RRSP63-F	2.5L

### Hématoxyline Coles

Cole peut être utilisé comme une coloration progressive et aussi régressive comme une coloration de routine semblable à l'Hématoxyline d'Ehrlich avec une coloration plus courte d'environ 10 minutes. Cette hématoxyline contient de l'iode qui oxyde l'hématoxyline hématopoyline permettant d'obtenir une solution utilisée immédia



Code	Pack
RRSP74-D	500ml
RRSP74-E	1L
RRSP74-F	2.5L

**NEW**



Distributeur Bag-In-Box disponible

Autres conditionnement disponibles



# Colorations de routine

## Eosines

L'éosine Y est la coloration cytoplasmique la plus couramment utilisée. C'est une coloration acide qui interagit avec les protéines cellulaires riches en acides aminés de base, un complexe de protéines de colorant est formé caractérisé par la coloration cytoplasmique rose vif.

### Eosines Aqueuses

Une solution aqueuse à pH ajusté, préfiltrée pour être libre de précipitation, produisant un contraste de couleur brillant entre les noyaux et le cytoplasme. Disponible dans les concentrations suivantes pour permettre le contrôle de l'équilibre entre la coloration nucléaire avec Hématoxyline et la coloration cytoplasmique avec Eosine.

#### Eosine Y (0.5% Aqueuse)

A 0.5%



Code	Pack
RRSP36-D	500ml
RRSP36-E	1L
RRSP36-F	2.5L
RRSP36-G	5L

#### Eosine Y (1% Aqueuse)

A 1%



Code	Pack
RRSP35-D	500ml
RRSP35-E	1L
RRSP35-F	2.5L
RRSP35-G	5L

#### Eosine Y (2% Aqueuse)

A 2%



Code	Pack
RRSP49-C	250ml
RRSP49-D	500ml
RRSP49-E	1L

#### Eosine Y (5% Aqueuse)

A 5%



Code	Pack
RRSP3505-C	250ml
RRSP3505-D	500ml
RRSP3505-E	1L

### Eosines Alcoliques

Une solution à base d'alcool au pH ajustée, préfiltrée pour être libre de précipitation, elle produit un contraste de couleur brillant entre les noyaux et le cytoplasme. L'Eosine alcoolique produit trois nuances distinctes de couleur pour améliorer la différenciation entre les muscles, les globules rouges et le tissu conjonctif. Disponible à 0,5 % et 1 % de résistance permettre le contrôle de l'équilibre entre la coloration nucléaire et la coloration cytoplasmique

#### Eosine Y (0.5% Alcolique)

A 0.5%



Code	Pack
RRSP39-D	500ml
RRSP39-E	1L
RRSP39-F	2.5L
RRSP39-G	5L

#### Eosine Y (1% Alcolique)

A 1%



Code	Pack
RRSP37-D	500ml
RRSP37-E	1L
RRSP37-F	2.5L
RRSP37-G	5L

# Colorations de routine

## Eosine Y (Putts)

Solution Putts



Code	Pack
RRSP34-D	500ml
RRSP34-E	1L
RRSP34-F	2.5L

## Eosine Y avec Phloxine

Une version d'Eosine Y produisant des nuances de rose très riches par rapport aux formulations d'Eosine standard



Code	Pack
RRSP38-D	500ml
RRSP38-E	1L
RRSP38-F	2.5L

**NEW**



Distributeur Bag-In-Box disponible

# Colorations de routine

## Alcools acides

Lorsqu'une coloration d'hématoxyline régressive est utilisée, une étape de différenciation est nécessaire pour éliminer l'excès d'hématoxyline du fond. Cela améliore la clarté des cellules. La différenciation est effectuée à l'aide d'une solution d'alcool acide et est disponible dans les concentrations suivantes

### Alcool acide 0.1%



Code	Pack
RRSP194-E	1L
RRSP194-F	2.5L
RRSP194-G	5L

### Alcool acide 0.25%



Code	Pack
RRSP457-E	1L
RRSP457-F	2.5L
RRSP457-G	5L

### Alcool acide 0.3%



Code	Pack
RRSP159-E	1L
RRSP159-F	2.5L
RRSP159-G	5L

### Alcool acide 0.5%



Code	Pack
RRSP186-E	1L
RRSP186-F	2.5L
RRSP186-G	5L

### Alcool acide 1%



Code	Pack
RRSP187-E	1L
RRSP187-F	2.5L
RRSP187-G	5L

### Alcool acide 3%



Code	Pack
RRSP3606-E	1L
RRSP3606-F	2.5L
RRSP3606-G	5L

# Colorations de routine

## Réactifs Bleuissants

Les tissus colorés d'hématoxyline nécessitent souvent une étape alcaline ou bleuissante. L'eau du robinet Scotts fournit un bleuissement rapide et précis de la chromatine nucléaire et des membranes nucléaires, tout en réduisant la perte d'adhérence des sections de tissu des lames de verre. Disponible en solutions prêtes à l'emploi ou concentrées

### Scotts Substitut (10 x Concentrate)



20 x version concentrée de RRSP192

Code	Pack
RRSP190-D	500ml
RRSP190-E	1L
RRSP190-F	2.5L
RRSP190-G	5L

### Scotts Substitut Prête à l'emploi



Avec sulfate de magnésium

Code	Pack
RRSP192-D	500ml
RRSP192-E	1L
RRSP192-F	2.5L
RRSP192-G	5L

### Scotts Plus Prête à l'emploi



Avec Sulphate de sodium

Code	Pack
RRSP195-D	500ml
RRSP195-E	1L
RRSP195-F	2.5L
RRSP195-G	5L



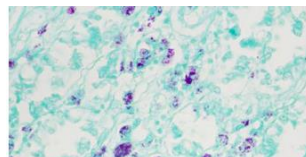
# Colorations spéciales



## Kit de coloration AFB (Contre coloration Vert lumière)

Ce kit de coloration est utilisé pour la coloration de Mycobacterium Tuberculosis et d'autres organismes acides rapides dans les sections tissulaires et les frottis. Les parois des mycobactéries ne sont pas facilement pénétrées donc le phénol est mélangé avec la fuch sine de base pour surmonter cela. Pas de chauffage nécessaire pour cette méthode

9/10  
UK  
NEQAS



		100 Test	200 Test	500 Test	1000 Test
Code	Kit Extension:	- 100	-200	-500	-1000
RRSK41	AFB Light Green				

### Kit

- Carbol Fuchsin Kinyoun
- TB Differentiateur x 2
- Vert lumière 0.5% Aqueux

### Carbol Fuchsin Kinyoun



Ethanol Dénaturé : <20%  
Phenol: <10%

Code	Pack
RRSP19-D	500ml
RRSP19-E	1L
RRSP19-F	2.5L

### TB Differentiateur



Contains:  
Ethanol Dénaturé: >97%  
Hydrochloric Acid: <3%

Code	Pack
RRSP145-D	500ml
RRSP145-E	1L
RRSP145-F	2.5L

### Vert lumière 0.5% Aqueux



Contains:  
Vert Lumière SF:  
<0.5%

Code	Pack
RRSP245-D	500ml
RRSP245-E	1L
RRSP245-F	2.5L

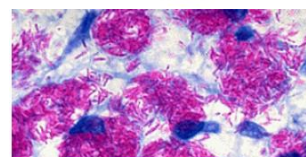
# Colorations spéciales



## Kit de coloration AFB (Contre coloration Bleu de Méthylène)

Ce kit de coloration est utilisé pour la coloration de Mycobacterium Tuberculosis ed'autres organismes acides rapides dans les sections tissulaires et les frottis. Les parois des mycobactéries ne sont pas facilement pénétrées donc le phénol est mélangé avec la fuch sine de base pour surmonter cela. Pas de chauffage nécessaire pour cette méthode

9/10  
UK  
NEQAS



		100 Test	200 Test	500 Test	1000 Test
Code	Kit Extension:	- 100	-200	-500	-1000
RRSK42	AFB Methylene Blue				

### Kit

- Carbol Fuchsin Kinyoun
- TB Differentiateur x 2
- Bleu de Méthylène AFB

### Carbol Fuchsin Kinyoun



Contains:  
Ethanol Dénaturé: <20%  
Phenol: <10%

Code	Pack
RRSP19-D	500ml
RRSP19-E	1L
RRSP19-F	2.5L

### TB Differentiateur



Contains:  
Ethanol Dénaturé: >97%  
Hydrochloric Acid: <3%

Code	Pack
RRSP145-D	500ml
RRSP145-E	1L
RRSP145-F	2.5L

### Bleu de Méthylène Solution (AFB)



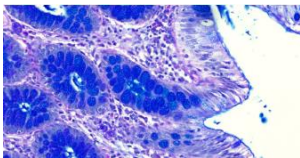
Contains:  
Denatured Ethanol: <30%  
Methylene Blue  
Potassium Hydroxide <1%

Code	Pack
RRSP1789-D	500ml
RRSP1789-E	1L
RRSP1789-F	2.5L

# Colorations spéciales



9/10  
UK  
NEQAS



## Kit de coloration Bleu Alcian PAS

Ce kit de coloration est utilisé pour la coloration des mucopolysaccharides acides sulfatés et carboxylés, et pour les radicaux glucidiques (par ex. glycogène). Le bleu alcian et la technique PAS se combinent pour différencier les mucines neutres des mucines acides. Il est utilisé comme une coloration à large spectre pour les mucines, un manque de coloration avec le stade combiné PAS indique que la substance n'est pas mucine

		100 Test	200 Test	500 Test	1000 Test
Code	Kit Extension:	- 100	-200	-500	-1000
RRSK6	Alcian Blue PAS				

### Kit

Acide périodique Solution 1%	Alcian Blue 1% in 3% Acetic Acid (pH 2.5)
Haemalum Mayer	
Réactif de Schiff (Feulgen)	

### Acide périodique (1% Aqueux)



Acide Périodique : 1%

Code	Pack
RRSP124-D	500ml
RRSP124-E	1L
RRSP124-F	2.5L

### Haemalum Mayer



Ethanol Dénaturé : <10%  
Chloral Hydrate: <5%  
Sodium Iodate: <1%

Code	Pack
RRSP60-D	500ml
RRSP60-E	1L
RRSP60-F	2.5L

### Feulgen coloration (Schiff)



Sodium Metabisulphite: <1%  
Hydrochloric Acid: <2%

Code	Pack
RRSP40-D	500ml
RRSP40-E	1L
RRSP40-F	2.5L

### Alcian Blue 8GX (1% in 3% Acetic Acid) pH 2.5



Bleu Alcian 8GX: <1%  
Acetic Acid: <3%

Code	Pack
RRSP4-D	500ml
RRSP4-E	1L
RRSP4-F	2.5L

# Colorations spéciales

## Kit de coloration Bleu Alcian pH 1.0

Ce kit de coloration est utilisé pour la coloration des sulfomucines et des sulfates contenant des protéoglycanes. Les tissus qui présentent cette coloration comprennent le cartilage, les muqueuses à cellules de gobelet du gros intestin et les muqueuses des glandes séreuses bronchiques

		100 Test	200 Test	500 Test	1000 Test
Code	Kit Extension:	- 100	-200	-500	-1000
RRSK300	Alcian Blue (pH 1.0)				



### Kit

Bleu Alcian 8GX 1% in 0.1N in HCL	
Haemalum Mayer	

### Bleu Alcian 8GX (1% in 0.1N HCL) pH 1.0



Bleu Alcian 8GX: 1%  
Hydrochloric Acid: <1%

Code	Pack
RRSP193-D	500ml
RRSP193-E	1L
RRSP193-F	2.5L

### Haemalum Mayer



Ethanol Dénaturé: <10%  
Chloral Hydrate: <5%  
Sodium Iodate: <1%

Code	Pack
RRSP60-D	500ml
RRSP60-E	1L
RRSP60-F	2.5L



# Colorations spéciales



## Kit de coloration Bleu Alcian (pH 2.5)

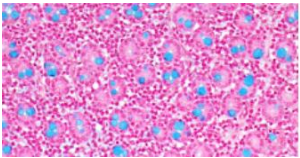
Ce kit de coloration est une coloration à large spectre pour les mucines. Il met en évidence les sialomucines, sulfomucines et les protéoglycanes. Le Bleu Alcian a été démontré pour lier et précipiter l'acide hyaluronique, le sulfate de chondroïtine et l'héparine à partir d'une solution aqueuse, mais ne précipite pas le glycogène qui est donc négatif glycogène contrairement au PAS qui est positif

9/10  
UK  
NEQAS

		100 Test	200 Test	500 Test	1000 Test
Code	Kit Extension:	- 100	-200	-500	-1000
RRSK400	Alcian Blue				

### Kit

- Bleu Alcian 8GX 1% in 3% Acetic Acid
- Rouge neutral 0.1% Aqueous
- Acide Acétique 3% Solution



### Bleu Alcian 8GX (1% in 3% Acetic Acid) pH 2.5



Contains:  
Alcian Blue 8GX: <1%  
Acetic Acid: <3%

Code	Pack
RRSP4-D	500ml
RRSP4-E	1L
RRSP4-F	2.5L

### Neutral Red 0.1%



Contains:  
Denatured Ethanol: <10%  
Neutral Red Powder

Code	Pack
RRSP556-D	500ml
RRSP556-E	1L
RRSP556-F	2.5L

### Acide Acétiq. 3% Solution



Contains:  
Acetic Acid: <3%

Code	Pack
RRSP247-D	500ml
RRSP247-E	1L
RRSP247-F	2.5L



# Colorations spéciales

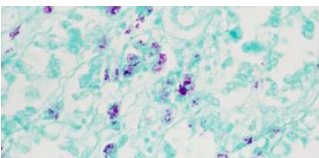
## Kit de coloration Cold Kinyoun (Contre coloration Vert Malachite)

Ce kit de coloration est utilisé pour la coloration de Mycobacterium Tuberculosis et d'autres organismes acides rapides dans les sections tissulaires et les frottis. Les parois des mycobactéries ne sont pas facilement pénétrées. Le phénol est mélangé avec la fuchsine de base pour surmonter cela. Aucun chauffage n'est nécessaire pour cette méthode

		100 Test	200 Test	500 Test	1000 Test
Code	Kit Extension:	- 100	-200	-500	-1000
RRSK7	Malachite Green				

### Kit

- Carbol Fuchsine Kinyoun
- TB Differentiateur x 2
- Vert Malachite 0.5% Aqueux



### Carbol Fuchsin Kinyoun



Contains:  
Denatured Ethanol: <20%  
Phenol: <10%

Code	Pack
RRSP19-D	500ml
RRSP19-E	1L
RRSP19-F	2.5L

### TB Differentiateur



Contains:  
Denatured Ethanol: >97%  
Hydrochloric Acid: <3%

Code	Pack
RRSP145-D	500ml
RRSP145-E	1L
RRSP145-F	2.5L

### Vert Malachite (0.5% Aqueux)



Contains:  
Denatured Ethanol: <5%  
Malachite Green: <1%

Code	Pack
RRSP86-D	500ml
RRSP86-E	1L
RRSP86-F	2.5L



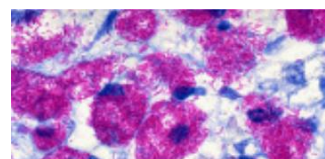
# Colorations spéciales



## Kit de Coloration Cold Kinyoun (Contre coloration Bleu de Methylene)

Ce kit de coloration est utilisé pour la coloration de Mycobacterium Tuberculosis et d'autres organismes acides rapides dans les sections tissulaires et les frottis. Les parois des mycobactéries ne sont pas facilement pénétrées. Le phénol est mélangé avec la fuchsine de base pour surmonter cela. Aucun chauffage est nécessaire pour cette méthode

		100 Test	200 Test	500 Test	1000 Test
Code	Kit Extension:	- 100	-200	-500	-1000
RRSK8	Methylene Blue				



### Kit

Carbol Fuchsin Kinyoun  
 TB Differentiateur x 2  
 Bleu de Méthylène (AFB)

### Carbol Fuchsin Kinyoun



Etganol dénaturé: <20%  
 Phenol: <10%

Code	Pack
RRSP19-D	500ml
RRSP19-E	1L
RRSP19-F	2.5L

### TB Differentiateur



Contains:  
 Ethanol dénaturé: >97%  
 Hydrochloric Acid: <3%

Code	Pack
RRSP145-D	500ml
RRSP145-E	1L
RRSP145-F	2.5L

### Bleu de Méthylène Solution (AFB)



Contains:  
 Ethanol Dénaturé: <30%  
 Methylene Blue  
 Potassium Hydroxide <1%

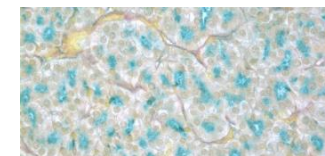
Code	Pack
RRSP1789-D	500ml
RRSP1789-E	1L
RRSP1789-F	2.5L

# Colorations spéciales

## Kit de coloration Colloidal Iron (Muller)

Ce kit de coloration est utilisé pour la détection des mucopolysaccharides acides et est basé sur l'attraction des cations ferriques dans une solution d'oxyde ferrique colloïdal pour les groupes carboxyle et sulfate chargés négativement des mucines acides et des protéoglycanes. Les ions ferriques liés aux tissus sont visualisés par traitement au ferrocyanure de potassium pour former des dépôts bleu vif de ferrocyanure ferrique ou de bleu prussien

		100 Test	200 Test	500 Test	1000 Test
Code	Kit Extension:	- 100	-200	-500	-1000
RRSK100	Colloidal Iron (Muller)				



### Kit

Ferric Chloride 29% solution aqueuse Réactif B Colloidal Perls (5% Potassium Ferrocyanide)  
 Acetic Acid 25% solution aqueuse Neutral Red 0.5% Aqueous Solution  
 Réactif A Colloidal Perls (5% Hydrochloric Acid)

### Ferric Chloride 29% Solution



Ferric Chloride: >29% w/v

Code	Pack
RRSP512-D	500ml
RRSP512-E	1L
RRSP512-F	2.5L

### Acetic Acid 25% Solution



Acetic Acid: 25%

Code	Pack
RRSP513-D	500ml
RRSP513-E	1L
RRSP513-F	2.5L

### Colloidal Perls Reactif A



Hydrochloric Acid: <2%

Code	Pack
RRSP249-D	500ml
RRSP249-E	1L
RRSP249-F	2.5L

### Colloidal Perls Réactif B



Potassium Ferrocyanide: <1%

Code	Pack
RRSP250-D	500ml
RRSP250-E	1L
RRSP250-F	2.5L

### Neutral Red (0.5% Aqueux)



Ethanol dénaturé: <10%  
 Neutral Red Powder

Code	Pack
RRSP109-D	500ml
RRSP109-E	1L
RRSP109-F	2.5L



# Colorations spéciales

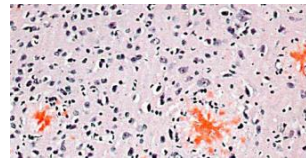


## Kit Rouge Congo Congo (Highman)

Ce kit de coloration est utilisé pour la détection de protéines amyloïdes dans les sections de tissus. L'utilisation de solvants alcooliques alcalins a pour effet de supprimer la coloration d'autres composants tissulaires tout en améliorant la liaison à l'hydrogène, améliorant ainsi la sélectivité de l'amyloïde. Cette méthode a des solutions stables et un haut degré de sélectivité

		100 Test	200 Test	500 Test	1000 Test
Code	Kit Extension:	- 100	-200	-500	-1000
RRSK10	Congo Red (Highman)				

9/10  
UK  
NEQAS



### Kit

Rouge Congo dans Ethanol 50%      Bleu Alcian 1% in 3% Acide acétique (pH 2.5)  
Haemalum Mayer  
Hydroxide de Potassium 0.2% dans de l'éthanol 80%

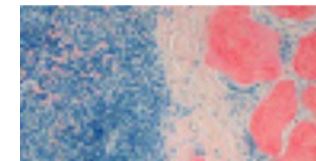
# Colorations spéciales



## Kit de coloration Rouge Congo (Puchtler & Sweat)

Ce kit de coloration est utilisé pour la détection de protéines amyloïdes dans les sections de tissus. Cette méthode élimine la nécessité d'une étape de différenciation avec l'utilisation d'une solution de chlorure de sodium hautement concentrée qui réduit la coloration de fond tout en améliorant la liaison hydrogène du rouge Congo à l'amyloïde résultant en une coloration progressive et une technique hautement sélective

		100 Test	200 Test
Code	Kit Extension:	- 100	-200
RRSK9	Congo Red (Puchtler & Sweat)		



### Kit

Saturated Sodium Chloride Alcoholic Solution      Sodium Hydroxide 1% Aqueous Solution x 5  
Congo Red in 80% Ethanol Saturated x 5  
Haemalum Mayer

### Rouge Congo dans Ethanol 50% (Highman)



Ethanol dénaturé: <50%

Code	Pack
RRSP180-D	500ml
RRSP180-E	1L
RRSP180-F	2.5L

### Haemalum Mayer



: Ethanol Dénaturé: <10%  
Chloral Hydrate: <5%  
Sodium Iodate: <1%

Code	Pack
RRSP60-D	500ml
RRSP60-E	1L
RRSP60-F	2.5L

### Potassium Hydroxide 0.2% in 80% Ethanol



: Ethanol dénaturé: <80%  
Potassium Hydroxide: <1%

Code	Pack
RRSP181-D	500ml
RRSP181-E	1L
RRSP1789-F	2.5L

### Saturated Sodium Chloride Alcoholic



Contains:  
Denatured Ethanol: >99%

Code	Pack
RRSP178-D	500ml
RRSP178-E	1L
RRSP178-F	2.5L

### Congo Red in 80% Ethanol Saturated



Contains:  
Denatured Ethanol: 80%  
Sodium Chloride: <1%  
Congo Red: <2%

Code	Pack
RRSP155-D	500ml
RRSP155-E	1L
RRSP155-F	2.5L

### Haemalum Mayer



Contains:  
Denatured Ethanol: <10%  
Chloral Hydrate: <5%  
Sodium Iodate: <1%

Code	Pack
RRSP60-D	500ml
RRSP60-E	1L
RRSP60-F	2.5L

### Alcian Blue 8GX (1% in 3% Acetic Acid) pH 2.5



Contains:  
Alcian Blue 8GX: <1%  
Acetic Acid: <3%

Code	Pack
RRSP4-D	500ml
RRSP4-E	1L
RRSP4-F	2.5L

### Sodium Hydroxide Solution 1%



Contains:  
Sodium Hydroxide: <1%

Code	Pack
RRSP179-D	500ml
RRSP179-E	1L
RRSP179-F	2.5L

# Colorations spéciales

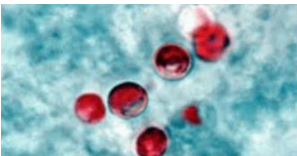
## Kit de coloration Cryptosporidium

Ce kit de coloration est couramment utilisé pour colorer les oocystes de l'espèce *Cryptosporidium* dans les frottis fécaux. Il est également utile de confirmer la présence d'oocystes d'*Isospora belli* et de *Cyclospora cayetanensis*

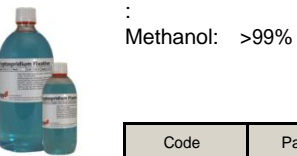
		100 Test	200 Test	500 Test	1000 Test
Code	Kit Extension:	- 100	-200	-500	-1000
RRSK75	Cryptosporidium				

### Kit

Cryptosporidium Fixative	Vert Malachite 0.5% Aqueux
Carbol Fuchsin Kinyoun	
TB Differentiator x 2	



### Cryptosporidium Fixative



Methanol: >99%

Code	Pack
RRSP163-D	500ml
RRSP163-E	1L
RRSP163-F	2.5L

### Carbol Fuchsin Kinyoun



Ethanol dénaturé: <20%  
Phenol: <10%

Code	Pack
RRSP19-D	500ml
RRSP19-E	1L
RRSP19-F	2.5L

### TB Differentiateur



Ethanol dénaturé: >97%  
Hydrochloric Acid: <3%

Code	Pack
RRSP145-D	500ml
RRSP145-E	1L
RRSP145-F	2.5L

### Vert Malachite (0.5% Aqueux)



Contains:  
Denatured Ethanol: <5%  
Malachite Green: <1%

Code	Pack
RRSP86-D	500ml
RRSP86-E	1L
RRSP86-F	2.5L

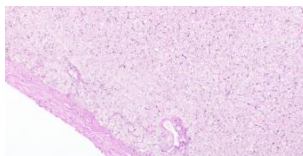
# Colorations spéciales

## Kit de coloration DPAS

Ce kit de coloration est utilisé pour différencier le glycogène des autres éléments PAS-positifs dans les sections de tissu. Le glycogène est éliminé par digestion enzymatique. Il est souvent utilisé conjointement avec le kit PAS



9/10 UK NEQAS



		100 Test	200 Test	500 Test	1000 Test
Code	Kit Extension:	- 100	-200	-500	-1000
RRSK150	DPAS				

### Kit

Lipase de pancréas de porc	Réactif de Schiff (Feulgen)
Acide Périodique Solution 1%	
Hématoxyline Harris	

### Lipase from Porcine Pancreas



This enzyme is suitable for the digestion step in the DPAS method.  
Typical working concentration 1%

Code	Pack
A01831-T	5gm
A01831-U	10gm
A01831-W	25gm

### Periodic Acid (1% Aqueous)



Contains:  
Periodic Acid : 1%

Code	Pack
RRSP124-D	500ml
RRSP124-E	1L
RRSP124-F	2.5L

### Haematoxylin Harris



Contains:  
Denatured Ethanol: <10%  
Sodium Iodate: <1%

Code	Pack
RRSP67-D	500ml
RRSP67-E	1L
RRSP67-F	2.5L

### Feulgen Stain (Schiff)



Contains:  
Sodium Metabisulphite: <1%  
Hydrochloric Acid: <2%

Code	Pack
RRSP40-D	500ml
RRSP40-E	1L
RRSP40-F	2.5L

# Colorations spéciales



## Kit de coloration Elastic Van Gieson (Miller) (EVG)

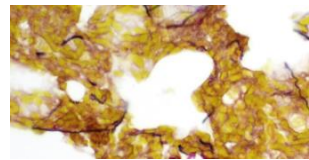
This stain kit uses a combined technique to demonstrate elastic fibres, collagen and muscle. Elastic fibres, especially fine fibres will stain intensely blue with the Miller stain. Elastin and pre elastin fibres are highly cross linked disulphide bridges which require oxidation with potassium permanganate followed by a bleach with oxalic acid

		100 Test	200 Test	500 Test	1000 Test
Code	Kit Extension:	- 100	-200	-500	-1000
RRSK11	Elastic Van Gieson (Miller) (EVG)				

9/10  
UK  
NEQAS

### Kit Components

Potassium Permanganate 0.5% Solution x 2	Millers Elastin Stain
Sulphuric Acid 3% Solution	Van Gieson Extra Stain
Oxalic Acid 1% Solution	



### Potassium Permanganate (0.5% Aqueous)

Contains:  
Potassium Permanganate: <1%

Code	Pack
RRSP132-D	500ml
RRSP132-E	1L
RRSP132-F	2.5L

### Sulphuric Acid 3% Aqueous Solution

Contains:  
Sulphuric Acid: <3%

Code	Pack
RRSP141-D	500ml
RRSP141-E	1L
RRSP141-F	2.5L

### Oxalic Acid 1% Solution

Contains:  
Oxalic Acid: <1%

Code	Pack
RRSP166-D	500ml
RRSP166-E	1L
RRSP166-F	2.5L

### Elastic Stain (Miller)

Contains:  
Denatured Ethanol: <50%  
Ferric Chloride: <1%  
Hydrochloric Acid: <1%  
Resorcinol: <1%

Code	Pack
RRSP31-D	500ml
RRSP31-E	1L
RRSP31-F	2.5L

### Van Gieson Extra

Contains:  
Picric Acid: <2.5%

Code	Pack
RRSP539-D	500ml
RRSP539-E	1L
RRSP539-F	2.5L

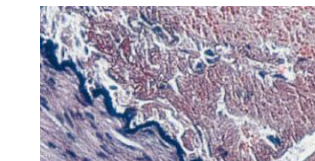
# Colorations spéciales



## Elastic Van Gieson Stain Kit (Verhoeffs) (EVG)

This stain kit is useful in demonstrating elastic fibres, collagen and muscle. Elastin has a high affinity for the iron-haematoxylin stain and hence will retain the dye longer than other tissue components which will be decolourised by the differentiation

		100 Test	200 Test	500 Test	1000 Test
Code	Kit Extension:	- 100	-200	-500	-1000
RRSK40	Elastic Van Gieson (Verhoeffs) (EVG)				



### Kit Components

Haematoxylin 5% alcoholic	Lugols Iodine
Ferric Chloride 10% solution x 3	Sodium Thiosulphate 5% Solution
Van Gieson Extra	

### Haematoxylin 5% Alcoholic Solution (For Verhoeffs)

Contains:  
Denatured Ethanol: >95%  
Haematoxylin: 5%

Code	Pack
RRSP182-D	500ml
RRSP182-E	1L
RRSP182-F	2.5L

### Ferric Chloride 10% Solution

Contains:  
Ferric Chloride: <10% w/v

Code	Pack
RRSP517-D	500ml
RRSP517-E	1L
RRSP517-F	2.5L

### Van Gieson Extra

Contains:  
Picric Acid: <2.5%

Code	Pack
RRSP539-D	500ml
RRSP539-E	1L
RRSP539-F	2.5L

### Lugols Iodine Solution (For Microscopy)

Contains:  
Potassium Iodide: <2%  
Iodine: <1%

Code	Pack
RRSP84-D	500ml
RRSP84-E	1L
RRSP84-F	2.5L

### Sodium Thiosulphate 5% Solution

Contains:  
Sodium Thiosulphate: <5%

Code	Pack
RRSP176-D	500ml
RRSP176-E	1L
RRSP176-F	2.5L



# Special Staining



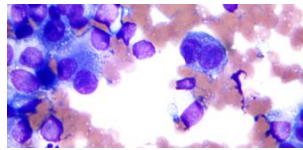
## Fields Stain Kit

This stain kit is used for the detection of malarial parasites in blood films. Fields Stain is one of the original Romanowsky stains using methylene blue in a weak solution of eosin. With some modifications it can be used fairly satisfactorily for the rapid staining of thin blood films

		100 Test	200 Test	500 Test	1000 Test
Code	Kit Extension:	- 100	-200	-500	-1000
RRSK25	Fields Stain Kit				

## Kit Components

- Fields Stain A (Aqueous Methylene Blue Solution A)
- Fields Stain B (Aqueous Eosin Y Solution B)
- Sorensens Buffer 200 x Concentrate pH 6.8 25ml to make 5L



### Fields Stain - Solution A

Contains:  
Methylene Blue  
Azur I  
Mixed Phosphates

Code	Pack
RRSP41-D	500ml
RRSP41-E	1L
RRSP41-F	2.5L

### Fields Stain - Solution B

Contains:  
Eosin Y  
Mixed Phosphates

Code	Pack
RRSP51-D	500ml
RRSP51-E	1L
RRSP51-F	2.5L

### Sorensens Buffer 200 x Concentrate pH 6.8 25ml to make 5L

Contains:  
Mixed Phosphates  
Dilute to 5000ml with  
Distilled Water for Use

Code	Pack
RRPBS2-10	10 x 25ml
RRPBS2-25	25 x 25ml
RRPBS2-250	250 x 25ml

# Special Staining



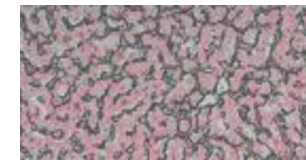
## Gomori Reticulin Stain Kit

This stain kit is a metal impregnation technique used to demonstrate reticulin fibres providing contrast which enables even the finest of fibres to be seen

		100 Test	200 Test
Code	Kit Extension:	- 100	-200
RRSK800	Gomori Reticulin		

## Kit Components

- Potassium Hydroxide 10%
- Ammonia 33% Solution
- Silver Nitrate 10% Solution x 2
- Potassium Permanganate 0.5% Solution x 2
- Ferric Ammonium Sulphate 2% Solution (iron Alum)
- Potassium Metabisulphite 2% Solution
- Formaldehyde 10% Solution (unbuffered)
- Gold Chloride 0.2% Solution
- Oxalic Acid 1% Solution
- Sodium Thiosulphate 2% Solution
- Van Gieson Stain
- Sulphuric Acid 3% Solution



### Potassium Hydroxide 10% Solution

Contains:  
Potassium Hydroxide: <10%



Code	Pack
RRSP125-D	500ml
RRSP125-E	1L
RRSP125-F	2.5L

### Ammonia Solution 33%

Minimum Assay (As NH<sub>3</sub>):  
33.0-34.0%  
Molecular Formula: NH<sub>4</sub>OH



Code	Pack
GPC9001-D	500ml
GPC9001-E	1L
GPC9001-F	2.5L

### Silver Nitrate 10% Solution

Contains:  
Silver Nitrate: <10%



Code	Pack
RRSP173-B	100ml
RRSP173-C	250ml
RRSP173-D	500ml

### Potassium Permanganate 0.5% Solution

Contains:  
Potassium Permanganate:  
<1%



Code	Pack
RRSP132-D	500ml
RRSP132-E	1L
RRSP132-F	2.5L

### Ferric Ammonium Sulphate 2.5% (Iron Alum)

Contains:  
Ferric Ammonium Sulphate:  
<2%



Code	Pack
RRSP501-D	500ml
RRSP501-E	1L
RRSP501-F	2.5L

### Potassium Metabisulphite 2% Aqueous

Contains:  
Potassium Disulphite: <2%



Code	Pack
RRSP400-D	500ml
RRSP400-E	1L
RRSP400-F	2.5L

# Special Staining



## Gomori Reticulin Stain Kit

### Kit Components Continued...

Potassium Hydroxide 10%	Formaldehyde 10% Solution (unbuffered)
Ammonia 33% Solution	Gold Chloride 0.2% Solution
Silver Nitrate 10% Solution x 2	Oxalic Acid 1% Solution
Potassium Permanganate 0.5% Solution x 2	Sodium Thiosulphate 2% Solution
Ferric Ammonium Sulphate 2% Solution (iron Alum)	Van Gieson Stain
Potassium Metabisulphite 2% Solution	Sulphuric Acid 3% Solution



### Formaldehyde 10% Solution unbuffered



Contains:  
Formaldehyde: <10% (unbuffered)

Code	Pack
RRSP505-D	500ml
RRSP505-E	1L
RRSP505-F	2.5L

### Oxalic Acid 1% Solution



Contains:  
Oxalic Acid: <1%

Code	Pack
RRSP166-D	500ml
RRSP166-E	1L
RRSP166-F	2.5L

### Gold Chloride 0.2% Aqueous Solution



Contains:  
Gold Chloride: 0.2%

Code	Pack
RRSP511-B	100ml
RRSP511-C	250ml
RRSP511-D	500ml

### Sodium Thiosulphate 2% Aqueous



Contains:  
Sodium Thiosulphate: <2%

Code	Pack
RRSP43-D	500ml
RRSP43-E	1L
RRSP43-F	2.5L

### Van Gieson Stain



Contains:  
Picric Acid: <1%

Code	Pack
RRSP152-D	500ml
RRSP152-E	1L
RRSP152-F	2.5L

### Sulphuric Acid 3% Aqueous Solution



Contains:  
Acetic Acid: 25%

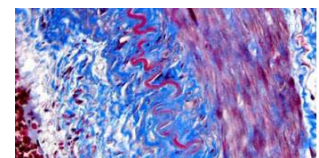
Code	Pack
RRSP141-D	500ml
RRSP141-E	1L
RRSP141-F	2.5L

# Special Staining

## Gomori Trichrome Stain Kit

This stain kit is used in the demonstration of connective tissue. It is a one step trichrome stain and can be used to differentiate between collagen and smooth muscle fibres

		100 Test	200 Test	500 Test	1000 Test
Code	Kit Extension:	- 100	-200	-500	-1000
RRSK70	Gomori Trichrome				



### Kit Components

Bouins saturated aqueous Solution	Acid Alcohol 0.5% Solution
Haematoxylin Weigerts A	Gomori Stain
Haematoxylin Weigerts B	Glacial Acetic Acid 0.5% Aqueous

### Bouins Fixative



Contains:  
Picric Acid: <5%  
Formaldehyde: <25%  
Acetic Acid: <1%

Code	Pack
RRFF5010-D	500ml
RRFF5010-E	1L
RRFF5010-F	2.5L

### Haematoxylin Weigerts A



Contains:  
Denatured Ethanol: >99%

Code	Pack
RRSP72-D	500ml
RRSP72-E	1L
RRSP72-F	2.5L

### Haematoxylin Weigerts B



Contains:  
Hydrochloric Acid: <1%  
Ferric Chloride: <1%

Code	Pack
RRSP73-D	500ml
RRSP73-E	1L
RRSP73-F	2.5L

### Acid Alcohol 0.5%



Contains:  
Denatured Ethanol: >99%  
Hydrochloric Acid: <1%

Code	Pack
RRSP186-D	500ml
RRSP186-E	1L
RRSP186-F	2.5L
RRSP186-3E-B	3L Dispenser
RRSP186-G	5L
RRSP186-G-B	5L Dispenser

### Gomori Trichrome Stain

Contains:  
Acetic Acid: <1%  
Phosphotungstic Acid: <1%

Code	Pack
RRSP189-D	500ml
RRSP189-E	1L
RRSP189-F	2.5L

### Acetic Acid 0.5% Solution



Contains:  
Acetic Acid: <1%

Code	Pack
RRSP191-D	500ml
RRSP191-E	1L
RRSP191-F	2.5L

# Special Staining



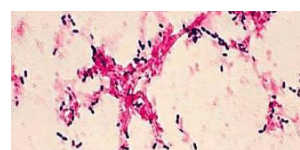
## Gram Stain Kit (Gram Fuchsin Counterstain)

This stain kit is used to demonstrate Gram Positive and Gram Negative Micro-organisms. The main principle of the technique is the increased thickness, chemical composition and functional integrity of the cell walls of gram positive bacteria, which when they die become gram negative

		100 Test	200 Test	500 Test	1000 Test
Code	Kit Extension:	- 100	-200	-500	-1000
RRSK3	Gram Fuchsin Counterstain				

### Kit Components

Crystal Violet (0.5% Aqueous)	Gram Fuchsin (Carbol Fuchsin)
Grams Iodine	
Gram Differentiator x 2	



# Special Staining

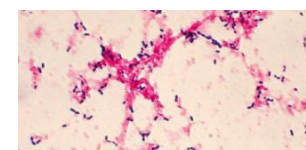
## Gram Stain Kit (Hucker & Conn)

This stain kit is used to demonstrate Gram Positive and Gram Negative Micro-organisms. The main principle of the technique is the increased thickness, chemical composition and functional integrity of the cell walls of gram positive bacteria, which when they die become gram negative

		100 Test	200 Test	500 Test	1000 Test
Code	Kit Extension:	- 100	-200	-500	-1000
RRSK200	Hucker & Conn				

### Kit Components

Crystal Violet Hucker & Conn	Safranin 0.5% aqueous
Grams Iodine	
Gram Differentiator x 2	



### Crystal Violet 0.5% Aqueous



Contains:  
Denatured Ethanol: <10%  
Crystal Violet Powder: <1%

Code	Pack
RRSP23-D	500ml
RRSP23-E	1L
RRSP23-F	2.5L
RRSP23-3E-B	3L Dispenser
RRSP23-G	5L
RRSP23-G-B	5L Dispenser

### Grams Iodine



Contains:  
Iodine: <3%  
Potassium Iodide: <6%

Code	Pack
RRSP59-D	500ml
RRSP59-E	1L
RRSP59-F	2.5L
RRSP59-3E-B	3L Dispenser
RRSP59-G	5L
RRSP59-G-B	5L Dispenser

### Gram Differentiator



Contains:  
Isopropanol: <70%  
Acetone: <30%

Code	Pack
RRSP57-D	500ml
RRSP57-E	1L
RRSP57-F	2.5L
RRSP57-G	5L

500ml

### Crystal Violet Oxalate (Hucker & Conn)



Contains:  
Denatured Ethanol: <10%

Code	Pack
RRSP26-D	500ml
RRSP26-E	1L
RRSP26-F	2.5L
RRSP26-3E-B	3L Dispenser
RRSP26-G	5L
RRSP26-G-B	5L Dispenser

### Grams Iodine



Contains:  
Iodine: <3%  
Potassium Iodide: <6%

Code	Pack
RRSP59-D	500ml
RRSP59-E	1L
RRSP59-F	2.5L
RRSP59-3E-B	3L Dispenser
RRSP59-G	5L
RRSP59-G-B	5L Dispenser

### Gram Differentiator



Contains:  
Isopropanol: <70%  
Acetone: <30%

Code	Pack
RRSP57-D	500ml
RRSP57-E	1L
RRSP57-F	2.5L
RRSP57-G	5L

### Carbol Fuchsin (Gram)



Contains:  
Denatured Ethanol: <10%  
Basic Fuchsin

Code	Pack
RRSP16-D	500ml
RRSP16-E	1L
RRSP16-F	2.5L
RRSP16-3E-B	3L Dispenser
RRSP16-G	5L
RRSP16-G-B	5L Dispenser

### Safranin 0.5% Aqueous



Contains:  
Denatured Ethanol: <10%

Code	Pack
RRSP169-D	500ml
RRSP169-E	1L
RRSP169-F	2.5L
RRSP169-3E-B	3L Dispenser
RRSP169-G	5L
RRSP169-G-B	5L Dispenser



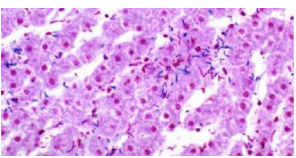
# Special Staining



## Gram Stain Kit (Neutral Red Counterstain)

This stain kit is used to demonstrate Gram Positive and Gram Negative Micro-organisms. The main principle of the technique is the increased thickness, chemical composition and functional integrity of the cell walls of gram positive bacteria, which when they die become gram negative

9/10  
UK  
NEQAS



		100 Test	200 Test	500 Test	1000 Test
Code	Kit Extension:	- 100	-200	-500	-1000
RRSK5	Neutral Red				

### Kit Components

Crystal Violet (0.5% Aqueous)	Neutral Red (0.5% solution)
Grams Iodine	
Gram Differentiator x 2	

### Crystal Violet 0.5% Aqueous



Contains:  
Denatured Ethanol: <10%  
Crystal Violet Powder: <1%

Code	Pack
RRSP23-D	500ml
RRSP23-E	1L
RRSP23-F	2.5L
RRSP23-3E-B	3L Dispenser
RRSP23-G	5L
RRSP23-G-B	5L Dispenser

### Grams Iodine



Contains:  
Iodine: <3%  
Potassium Iodide: <6%

Code	Pack
RRSP59-D	500ml
RRSP59-E	1L
RRSP59-F	2.5L
RRSP59-3E-B	3L Dispenser
RRSP59-G	5L
RRSP59-G-B	5L Dispenser

### Gram Differentiator



Contains:  
Isopropanol: <70%  
Acetone: <30%

Code	Pack
RRSP57-D	500ml
RRSP57-E	1L
RRSP57-F	2.5L
RRSP57-G	5L

500ml

### Neutral Red (0.5% Aqueous)



Contains:  
Denatured Ethanol: <10%  
Neutral Red Powder

Code	Pack
RRSP109-D	500ml
RRSP109-E	1L
RRSP109-F	2.5L
RRSP109-3E-B	3L Dispenser
RRSP109-G	5L
RRSP109-G-B	5L Dispenser

# Special Staining



## Gram Stain Kit (Safranin Counterstain)

This stain kit is used to demonstrate Gram Positive and Gram Negative micro-organisms. The main principle of the technique is the increased thickness, chemical composition and functional integrity of the cell walls of Gram positive bacteria, which when they die become gram negative



		100 Test	200 Test	500 Test	1000 Test
Code	Kit Extension:	- 100	-200	-500	-1000
RRSK4	Safranin Counterstain				

### Kit Components

Crystal Violet (0.5% Aqueous)	Safranin (0.5% Aqueous)
Grams Iodine	
Gram Differentiator x 2	

### Crystal Violet 0.5% Aqueous



Contains:  
Denatured Ethanol: <10%  
Crystal Violet Powder: <1%

Code	Pack
RRSP23-D	500ml
RRSP23-E	1L
RRSP23-F	2.5L
RRSP23-3E-B	3L Dispenser
RRSP23-G	5L
RRSP23-G-B	5L Dispenser

### Grams Iodine



Contains:  
Iodine: <3%  
Potassium Iodide: <6%

Code	Pack
RRSP59-D	500ml
RRSP59-E	1L
RRSP59-F	2.5L
RRSP59-3E-B	3L Dispenser
RRSP59-G	5L
RRSP59-G-B	5L Dispenser

### Gram Differentiator



Contains:  
Isopropanol: <70%  
Acetone: <30%

Code	Pack
RRSP57-D	500ml
RRSP57-E	1L
RRSP57-F	2.5L
RRSP57-G	5L

### Safranin 0.5% Aqueous



Contains:  
Denatured Ethanol: <10%

Code	Pack
RRSP169-D	500ml
RRSP169-E	1L
RRSP169-F	2.5L
RRSP169-3E-B	3L Dispenser
RRSP169-G	5L
RRSP169-G-B	5L Dispenser

# Special Staining

## Gram Stain Kit (Twort Counterstain)

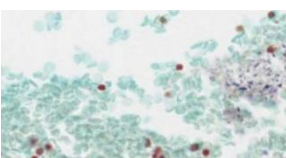
This stain kit is used to demonstrate Gram Positive and Gram Negative Micro-organisms. The main principle of the technique is the increased thickness, chemical composition and functional integrity of the cell walls of gram positive bacteria, which when they die become gram negative



		100 Test	200 Test	500 Test	1000 Test
Code	Kit Extension:	- 100	-200	-500	-1000
RRSK45	Twort Counterstain				

### Kit Components

Crystal Violet (0.5% Aqueous)	Twort Solution A ( 0.2% Neutral Red in IMS)
Grams Iodine	Twort Solution B (0.2% Fast Green in IMS)
Gram Differentiator x 2	



### Crystal Violet 0.5% Aqueous

Contains:  
Denatured Ethanol: <10%  
Crystal Violet Powder: <1%



Code	Pack
RRSP23-D	500ml
RRSP23-E	1L
RRSP23-F	2.5L
RRSP23-3E-B	3L Dispenser
RRSP23-G	5L
RRSP23-G-B	5L Dispenser

### Grams Iodine

Contains:  
Iodine: <3%  
Potassium Iodide: <6%



Code	Pack
RRSP59-D	500ml
RRSP59-E	1L
RRSP59-F	2.5L
RRSP59-3E-B	3L Dispenser
RRSP59-G	5L
RRSP59-G-B	5L Dispenser

### Gram Differentiator

Contains:  
Isopropanol: <70%  
Acetone: <30%



Code	Pack
RRSP57-D	500ml
RRSP57-E	1L
RRSP57-F	2.5L
RRSP57-G	5L

### Twort Stain Solution A

Contains:  
Denatured Ethanol: >99%



Code	Pack
RRSP233-D	500ml
RRSP233-E	1L
RRSP233-F	2.5L
RRSP233-3E-B	3L Dispenser
RRSP233-G	5L
RRSP233-G-B	5L Dispenser

### Twort Stain Solution B

Contains:  
Denatured Ethanol: >99%



Code	Pack
RRSP234-D	500ml
RRSP234-E	1L
RRSP234-F	2.5L
RRSP234-3E-B	3L Dispenser
RRSP234-G	5L
RRSP234-G-B	5L Dispenser

# Special Staining

## Grocott Stain Kit

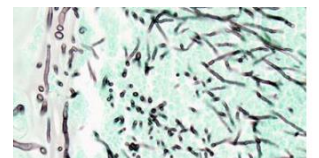
This stain kit is used to demonstrate fungi, basement membrane and some other organisms (e.g. Pneumocystis Carinii and histoplasma)



		100 Test	200 Test
Code	Kit Extension:	- 100	-200
RRSK80	Grocotts		

### Kit Components

Chromic Acid 5% Solution x 2	Sodium Metabisulphite 1% Solution
Hexamine (Methanamine) 3% Solution x 2	Gold Chloride 0.1% Solution
Silver Nitrate 5% Solution	Sodium Thiosulphate 2% Solution
Sodium Tetraborate 5% Solution x 2	Light Green (0.2% in 0.2% Acetic Acid)



### Chromic Acid Solution 5% Aqueous

Contains:  
Chromic Acid: <5%



Code	Pack
RRSP7-D	500ml
RRSP7-E	1L
RRSP7-F	2.5L

### Hexamine 3% Solution (For Grocotts)

Contains:  
Hexamethylenetetramine: <3%



Code	Pack
RRSP45-D	500ml
RRSP45-E	1L
RRSP45-F	2.5L

### Silver Nitrate 5% Solution

Contains:  
Silver Nitrate: <5%



Code	Pack
RRSP44-B	100ml
RRSP44-C	250ml
RRSP44-D	500ml

### Sodium Tetraborate (Borax) 5% Solution

Contains:  
Sodium Tetraborate: <5%



Code	Pack
RRSP522-D	500ml
RRSP522-E	1L
RRSP522-F	2.5L

### Sodium Metabisulphite 1% Solution (for Grocott)

Contains:  
Acetic Acid: <1%  
Phosphotungstic Acid: <1%



Code	Pack
RRSP520-D	500ml
RRSP520-E	1L
RRSP520-F	2.5L

### Gold Chloride Solution 0.1% Aqueous

Contains:  
Gold Chloride: <0.1%



Code	Pack
RRSP42-B	100ml
RRSP42-C	250ml
RRSP42-D	1L

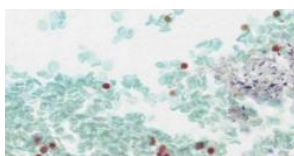
# Special Staining



## Grocott Stain Kit

### Kit Components Continued...

Chromic Acid 5% Solution x 2	Sodium Metabisulphite 1% Solution
Hexamine (Methanamine) 3% Solution x 2	Gold Chloride 0.1% Solution
Silver Nitrate 5% Solution	Sodium Thiosulphate 2% Solution
Sodium Tetraborate 5% Solution x 2	Light Green (0.2% in 0.2% Acetic Acid)



### Sodium Thiosulphate 2% Aqueous



Contains:  
Sodium Thiosulphate: <2%

Code	Pack
RRSP43-D	500ml
RRSP43-E	1L
RRSP43-F	2.5L

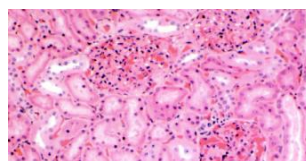
### Light Green 0.2% in 0.2% Acetic Acid



Contains:  
Acetic Acid: <1%

Code	Pack
RRSP525-D	500ml
RRSP525-E	1L
RRSP525-F	2.5L

# Special Staining



## Haematoxylin & Eosin Stain Kit (H&E)

This stain kit is used to demonstrate Gram Positive and Gram Negative Micro-organisms. The main principle of the technique is the increased thickness, chemical composition and functional integrity of the cell walls of gram positive bacteria, which when they die become gram negative

		100 Test	200 Test	500 Test	1000 Test
Code	Kit Extension:	- 100	-200	-500	-1000
RRSK26	Haematoxylin & Eosin				

### Kit Components

Haematoxylin Harris	Scotts Tap Water
Eosin Y 1% Aqueous	
Acid Alcohol 0.5%	

### Haematoxylin Harris



Contains:  
Denatured Ethanol: <10%  
Sodium Iodate: <1%

Code	Pack
RRSP67-D	500ml
RRSP67-E	1L
RRSP67-F	2.5L
RRSP67-3E-B	3L Dispenser
RRSP67-G	5L
RRSP67-G-B	5L Dispenser

### Eosin Y (1% Aqueous)



Contains:  
Eosin Y: <1%  
Calcium Chloride: <1%  
Sodium Azide: <1%

Code	Pack
RRSP35-D	500ml
RRSP35-E	1L
RRSP35-F	2.5L
RRSP35-3E-B	3L Dispenser
RRSP35-G	5L
RRSP35-G-B	5L Dispenser

### Acid Alcohol 0.5%



Contains:  
Denatured Ethanol: >99%  
Hydrochloric Acid: <1%

Code	Pack
RRSP186-D	500ml
RRSP186-E	1L
RRSP186-F	2.5L
RRSP186-3E-B	3L Dispenser
RRSP186-G	5L
RRSP186-G-B	5L Dispenser

### Scotts Tap Water substitute Ready to use



Contains:  
Sodium Azide: <1%  
Sodium Hydrogen Carbonate  
Magnesium Sulphate

Code	Pack
RRSP192-D	500ml
RRSP192-E	1L
RRSP192-F	2.5L
RRSP192-3E-B	3L Dispenser
RRSP192-G	5L
RRSP192-G-B	5L Dispenser



# Special Staining

## Kleihauer Stain Kit

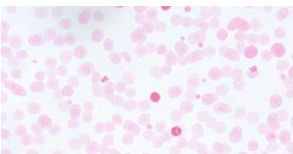
This stain kit is used to detect foetal cells in a maternal circulation and is based upon the ability of foetal cells to withstand acid pH whereas adult red cells undergo elution of the haemoglobin



		100 Test	200 Test	500 Test	1000 Test
Code	Kit Extension:	- 100	-200	-500	-1000
RRSK33	Kleihauer				

### Kit Components

Kleihauer Buffer Solution 1 x 3	Haemalum Mayer
Kleihauer Buffer Solution 2 x 2	Denatured Ethanol 80%
Erythrosin 0.1% Acidified Solution	



### Kleihauer Buffer - Solution 1



Contains:  
di-Sodium Hydrogen Phosphate <3%

Code	Pack
RRSP5691-D	500ml
RRSP5691-E	1L
RRSP5691-F	2.5L

### Kleihauer Buffer - Solution 2



Contains:  
Citric Acid: >2%

Code	Pack
RRSP5692-D	500ml
RRSP5692-E	1L
RRSP5692-F	2.5L

### Erythrosine B 0.1% Solution Acidified



Contains:  
Erythrosine B: <0.1%  
Acetic Acid: <1%

Code	Pack
RRSP5694-D	500ml
RRSP5694-E	1L
RRSP5694-F	2.5L

### Haemalum Mayer



Contains:  
Denatured Ethanol: <10%  
Chloral Hydrate: <5%  
Sodium Iodate: <1%

Code	Pack
RRSP60-D	500ml
RRSP60-E	1L
RRSP60-F	2.5L

### Denatured Ethanol 80%



Contains:  
Denatured Ethanol: <80%

Code	Pack
RRSP422-D	500ml
RRSP422-E	1L
RRSP422-F	2.5L

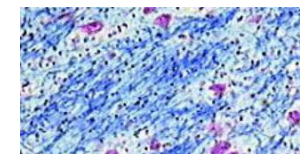
# Special Staining

## Luxol Fast Blue Stain Kit

This stain kit is used to demonstrate the presence of normal myelin. When combined with a cresyl violet counterstain myelin and nissl substances are demonstrated



10/10  
UK  
NEQAS



		100 Test	200 Test	500 Test	1000 Test
Code	Kit Extension:	- 100	-200	-500	-1000
RRSK345	Luxol Fast Blue				

### Kit Components

Luxol Fast Blue 0.1% in Acidified Methanol	Lithium Carbonate Solution 0.05%
Cresyl Violet 0.5% Aqueous Solution	Denatured Ethanol 70%
Cresyl Violet Differentiator (IMS 99%)	

### Luxol Fast Blue in Acidified Methanol



Contains:  
Methanol: >99%

Code	Pack
RRSP248-D	500ml
RRSP248-E	1L
RRSP248-F	2.5L

### Cresyl Violet 0.5% Aqueous

Contains:  
Cresyl Violet Acetate: <1%  
Acetic Acid: <1%

Code	Pack
RRSP251-D	500ml
RRSP251-E	1L
RRSP251-F	2.5L

### Cresyl Violet Differentiator



Contains:  
Denatured Ethanol: >95%  
Acetic Acid: <1%

Code	Pack
RRSP260-D	500ml
RRSP260-E	1L
RRSP260-F	2.5L

### Lithium Carbonate 0.05% Solution



Contains:  
Lithium Carbonate : <1%

Code	Pack
RRSP252-D	500ml
RRSP252-E	1L
RRSP252-F	2.5L

### Denatured Ethanol 70%



Contains:  
Denatured Ethanol: <70%

Code	Pack
RRSP242-D	500ml
RRSP242-E	1L
RRSP242-F	2.5L

# Special Staining



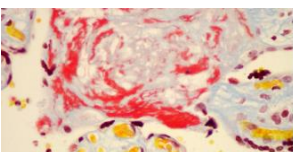
## Martius Scarlet Blue Stain Kit (MSB)

This stain kit allows the differentiation of fibrin, collagen and muscle. Early fibrin and red blood cells are also demonstrated with this technique

		100 Test	200 Test	500 Test	1000 Test
Code	Kit Extension:	- 100	-200	-500	-1000
RRSK2	Martius Scarlet Blue				

### Kit Components

Martius Yellow Sat. Alcoholic with 2% Phosphotungstic Acid	Haematoxylin Weigerts (Solution B)
Phosphotungstic Acid 1% Solution	Brilliant Crystal Scarlet
Haematoxylin Weigerts (Solution A)	Denatured Ethanol 80%



### Martius Yellow Sat. Alcoholic with 2% Phosphotungstic Acid

Contains:  
Denatured Ethanol: >99%  
Phosphotungstic Acid: 2%

Code	Pack
RRSP165-D	500ml
RRSP165-E	1L
RRSP165-F	2.5L

### Phosphotungstic Acid 1% Solution

Contains:  
Phosphotungstic Acid: <1%



Code	Pack
RRSP172-D	500ml
RRSP172-E	1L
RRSP172-F	2.5L

### Haematoxylin Weigerts A

Contains:  
Denatured Ethanol: >99%



Code	Pack
RRSP72-D	500ml
RRSP72-E	1L
RRSP72-F	2.5L

### Haematoxylin Weigerts B

Contains:  
Hydrochloric Acid: <1%  
Ferric Chloride: <1%



Code	Pack
RRSP73-D	500ml
RRSP73-E	1L
RRSP73-F	2.5L

### Brilliant Crystal Scarlet Solution

Contains:  
Acetic Acid: <3%

Code	Pack
RRSP657-D	500ml
RRSP657-E	1L
RRSP657-F	2.5L

### Aniline Blue (1% Aqueous)

Contains:  
Aniline Blue: <1%

Code	Pack
RRSP5-D	500ml
RRSP5-E	1L
RRSP5-F	2.5L

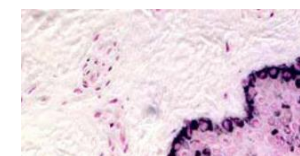
# Special Staining



## Masson Fontana Stain Kit

This stain kit is used to demonstrate melanin in tissue but can also demonstrate argentaffin cell granules and lipofuscins.

10/10  
UK  
NEQAS



		100 Test	200 Test
Code	Kit Extension:	- 100	-200
RRSK12	Masson Fontana		

### Kit Components

Ammonia Solution 33%	Neutral Red 0.1% Solution
Silver Nitrate 10% Solution x 4	
Sodium Thiosulphate 5% Solution	

### Ammonia Solution 33-34% SGO.88

Contains:  
Ammonia: >33%



Code	Pack
GPC9001-D	500ml
GPC9001-E	1L
GPC9001-F	2.5L

### Silver Nitrate 10% Solution

Contains:  
Silver Nitrate: <10%



Code	Pack
RRSP173-B	100ml
RRSP173-C	250ml
RRSP173-D	500ml

### Sodium Thiosulphate 5% Solution

Contains:  
Sodium Thiosulphate: <5%



Code	Pack
RRSP176-D	500ml
RRSP176-E	1L
RRSP176-F	2.5L

### Neutral Red (0.1% Aqueous)

Contains:  
Denatured Ethanol: <10%  
Neutral Red Powder



Code	Pack
RRSP556-D	500ml
RRSP556-E	1L
RRSP556-F	2.5L
RRSP556-3E-B	3L Dispenser
RRSP556-G	5L
RRSP556-G-B	5L Dispenser

# Special Staining

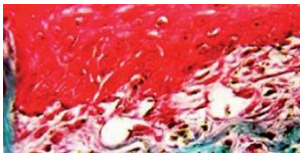
## Masson Trichrome (Light Green) Stain Kit

This stain kit is used to demonstrate connective tissues. Three dyes are used, each with different selectivity for muscle, collagen fibres and erythrocytes hence the term 'trichrome' staining

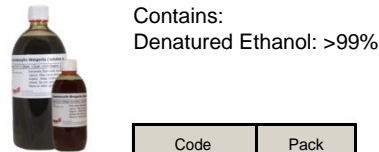
		100 Test	200 Test	500 Test	1000 Test
Code	Kit Extension:	- 100	-200	-500	-1000
RRSK21	Masson Trichrome (Light Green)				

### Kit Components

Haematoxylin Weigerts (Solution A)	Ponceau Fuchsin Masson Solution
Haematoxylin Weigerts (Solution B)	Light Green Masson (2% Light Green in 2.5% Acetic Acid)
Phosphotungstic Acid 1% Solution	



### Haematoxylin Weigerts A



Contains:  
Denatured Ethanol: >99%

Code	Pack
RRSP72-D	500ml
RRSP72-E	1L
RRSP72-F	2.5L

### Haematoxylin Weigerts B



Contains:  
Hydrochloric Acid: <1%  
Ferric Chloride: <1%

Code	Pack
RRSP73-D	500ml
RRSP73-E	1L
RRSP73-F	2.5L

### Phosphotungstic Acid 1% Solution



Contains:  
Phosphotungstic Acid: <1%

Code	Pack
RRSP172-D	500ml
RRSP172-E	1L
RRSP172-F	2.5L

### Ponceau Fuchsin (Masson)



Contains:  
Acetic Acid <1%

Code	Pack
RRSP5120-D	500ml
RRSP5120-E	1L
RRSP5120-F	2.5L

### Light Green Masson (2% in 2.5% Acetic Acid)

Contains:  
Acetic Acid: <1%

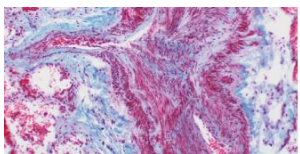
Code	Pack
RRSP79-D	
RRSP79-E	1L
RRSP79-F	2.5L

# Special Staining

## Masson Trichrome (Methyl Blue) Stain Kit

This stain kit is used to demonstrate connective tissues. Three dyes are used, each with different selectivity for muscle, collagen fibres and erythrocytes hence the term 'trichrome' staining

		100 Test	200 Test	500 Test	1000 Test
Code	Kit Extension:	- 100	-200	-500	-1000
RRSK20	Masson Trichrome (Methyl Blue)				



### Kit Components

Haematoxylin Weigerts (Solution A)	Haematoxylin Weigerts (Solution B)	Ponceau Fuchsin Masson Solution
		2% Methyl Blue in 2.5% Acetic Acid
Phosphotungstic Acid 1% Solution		

### Haematoxylin Weigerts A



Contains:  
Denatured Ethanol: >99%

Code	Pack
RRSP72-D	500ml
RRSP72-E	1L
RRSP72-F	2.5L

### Haematoxylin Weigerts B



Contains:  
Hydrochloric Acid: <1%  
Ferric Chloride: <1%

Code	Pack
RRSP73-D	500ml
RRSP73-E	1L
RRSP73-F	2.5L

### Phosphotungstic Acid 1% Solution



Contains:  
Phosphotungstic Acid: <1%

Code	Pack
RRSP172-D	500ml
RRSP172-E	1L
RRSP172-F	2.5L

### Ponceau Fuchsin (Masson)



Contains:  
Acetic Acid <1%

Code	Pack
RRSP5120-D	500ml
RRSP5120-E	1L
RRSP5120-F	2.5L

500ml

### Methyl Blue 2% in 2.5% Acetic Acid

Contains:  
Acetic Acid: <1%

Code	Pack
RRSP112-D	500ml
RRSP112-E	1L
RRSP112-F	2.5L



# Special Staining



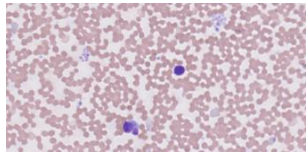
## May Grünwald Giemsa Stain Kit

This stain kit is used for the differential staining of cellular elements of blood. Giemsa and May Grünwald staining solutions are classified as "Romanowsky" stains. These compound dyes are relatively insoluble in water and are usually prepared by solubilisation in Methanol

		100 Test	200 Test	500 Test	1000 Test
Code	Kit Extension:	- 100	-200	-500	-1000
RRSK27	May Grünwald Giemsa				

### Kit Components

- May Grünwald Stain
- Giemsa Stain
- Sorensens Buffer (200x conc) pH6.8



### May Grünwald Stain

Contains:  
Methanol: >99%  
May Grünwald Powder



Code	Pack
RRSP87-D	500ml
RRSP87-E	1L
RRSP87-F	2.5L
RRSP87-3E-B	3L Dispenser
RRSP87-G	5L
RRSP87-G-B	5L Dispenser

### Giemsa Stain RR88

Contains:  
Methanol: <50%  
Glycerol: <50%  
Giemsa Powder



Code	Pack
RRSP54-D	500ml
RRSP54-E	1L
RRSP54-F	2.5L
RRSP54-3E-B	3L Dispenser
RRSP54-G	5L
RRSP54-G-B	5L Dispenser

### Sorensens Buffer 200 x Concentrate pH 6.8 to make 5L

Contains:  
Mixed Phosphates  
Dilute to 5000ml with Distilled Water for Use



Code	Pack
RRPBS2-10	10 x 25ml
RRPBS2-25	25 x 25ml
RRPBS2-250	250 x 25ml

# Special Staining

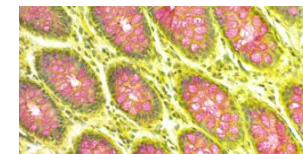
## Mucicarmine Southgate Stain Kit

This stain kit is used for the demonstration of acid mucins. The active dye molecule is aluminium carminic acid complex known as carmine (Lillie 1977). The exact mechanism is not fully understood but it is believed that aluminium salts form a chelate complex with carminic acid which confers an overall positive charge on the carmine complex attracting sialomucins and sulfomucins and thus staining them whilst neutral mucins do not stain

		100 Test	200 Test	500 Test	1000 Test
Code	Kit Extension:	- 100	-200	-500	-1000
RRSK13	Mucicarmine Southgate				

### Kit Components

- Mucicarmine (Southgate)
- Scotts Tap Water Substitute
- Martius Yellow Saturated Alcoholic
- Haemalum Mayer



### Mucicarmine (Southgate)

Contains:  
Denatured Ethanol: <50%  
Aluminium Hydroxide: <1%

Code	Pack
RRSP103-D	500ml
RRSP103-E	1L
RRSP103-F	2.5L

### Scotts Tap water substitute Ready to use



Contains:  
Sodium Azide: <1%  
Sodium Hydrogen Carbonate  
Magnesium Sulphate

Code	Pack
RRSP192-D	500ml
RRSP192-E	1L
RRSP192-F	2.5L
RRSP192-3E-B	3L Dispenser
RRSP192-G	5L
RRSP192-G-B	5L Dispenser

### Martius Yellow (Sat. Alcoholic Solution)

Contains:  
Denatured Ethanol: >99%

Code	Pack
RRSP164-D	500ml
RRSP164-E	1L
RRSP164-F	2.5L

### Haemalum Mayer



Contains:  
Denatured Ethanol: <10%  
Chloral Hydrate: <5%  
Sodium Iodate: <1%

Code	Pack
RRSP60-D	500ml
RRSP560-E	1L
RRSP560-F	2.5L

# Special Staining

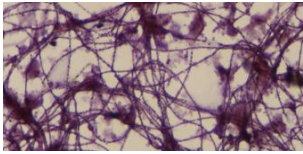
## Neisser Stain Kit

This stain kit is used to demonstrate certain strains of filamentous bacteria in tissue sections and/or smears. The method can demonstrate the Bio-P bacteria responsible for biological phosphate removal

		100 Test	200 Test	500 Test	1000 Test
Code	Kit Extension:	- 100	-200	-500	-1000
RRSK62	Neisser				

### Kit Components

Neisser Stain A (Methylene Blue Solution)	Neisser Stain D (Chrysoidine Solution)
Neisser Stain B (Crystal Violet Solution)	
Neisser Stain C (Iodine Solution)	



### Neissers Stain A

Contains:  
Denatured Ethanol: <5%  
Acetic Acid: <5%

Code	Pack
RRSP104-D	500ml
RRSP104-E	1L
RRSP104-F	2.5L
RRSP104-3E-B	3L Dispenser
RRSP104-G	5L
RRSP104-G-B	5L Dispenser

### Neissers Stain B

Contains:  
Denatured Ethanol: <7%  
Gentian Violet: <1%

Code	Pack
RRSP105-D	500ml
RRSP105-E	1L
RRSP105-F	2.5L
RRSP105-3E-B	3L Dispenser
RRSP105-G	5L
RRSP105-G-B	5L Dispenser

### Neissers Stain C

Contains:  
Hydrochloric Acid: <1%  
Iodine: <2%

Code	Pack
RRSP106-D	500ml
RRSP106-E	1L
RRSP106-F	2.5L
RRSP106-3E-B	3L Dispenser
RRSP106-G	5L
RRSP106-G-B	5L Dispenser

### Neissers Stain D

Contains:  
Sodium Azide: <1%

Code	Pack
RRSP107-D	500ml
RRSP107-E	1L
RRSP107-F	2.5L
RRSP107-3E-B	3L Dispenser
RRSP107-G	5L
RRSP107-G-B	5L Dispenser

# Special Staining

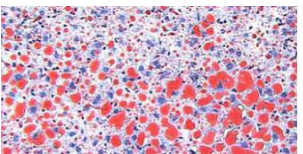
## Oil Red O Stain Kit

This stain kit is used to demonstrate hydrophobic lipids especially neutral fats in tissue. In order to penetrate the fats the dye must be dissolved in organic solvents, the solvent must be sufficiently dilute (aqueous) to avoid extracting the lipids into the solution. The most widely used solvent is isopropyl alcohol (isopropanol/IPA). Also, the tissue once stained, can be shown by polarised light to demonstrate birefringent cholesterol

		100 Test	200 Test	500 Test	1000 Test
Code	Kit Extension:	- 100	-200	-500	-1000
RRSK14	Oil Red O				

### Kit Components

Saturated Oil Red O Stain in Isopropyl Alcohol
Haemalum Mayer
Isopropyl Alcohol 70% x 2



### Oil Red O 1% Solution in Isopropanol

Contains:  
Isopropanol: >99%

Code	Pack
RRSP185-D	500ml
RRSP185-E	1L
RRSP185-F	2.5L

### Haemalum Mayer

Contains:  
Denatured Ethanol: <10%  
Chloral Hydrate: <5%  
Sodium Iodate: <1%

Code	Pack
RRSP60-D	500ml
RRSP60-E	1L
RRSP60-F	2.5L

### Isopropanol 70% Blend

Contains:  
Isopropanol: >70%

Code	Pack
GPS1030-D	500ml
GPS1030-E	1L
GPS1030-F	2.5L

# Special Staining

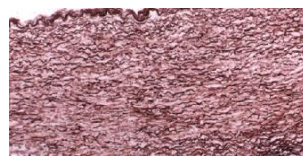
## Orcein Elastic Stain Kit

This stain kit can be used to demonstrate elastic fibres in tissue sections; recommended for vascular pathology

		100 Test	200 Test	500 Test	1000 Test
Code	Kit Extension:	- 100	-200	-500	-1000
RRSK91	Orcein Elastic				

### Kit Components

Orcein Shikata (for HbsAg in tissue)	Oxalic Acid 1% Solution
Potassium Permanganate 0.5% Solution x 2	Denatured Ethanol 70%
Sulphuric Acid 3% Solution	Acid Alcohol 1%



# Special Staining

## Orcein Shikata Stain Kit (for HbsAg in tissue)

This stain kit is a popular for staining hepatitis B surface antigen and copper associated protein commonly found in diseases such as Wilson's disease and chronic biliary disease

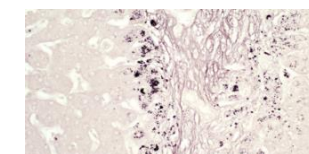
		100 Test	200 Test	500 Test	1000 Test
Code	Kit Extension:	- 100	-200	-500	-1000
RRSK29	Orcein Shikata				

### Kit Components

Orcein Shikata (for HbsAg in tissue)	Oxalic Acid 1% Solution
Potassium Permanganate 0.5% solution x 2	Denatured Ethanol 70% x 3
Sulphuric Acid 3% Solution	



9/10  
UK  
NEQAS



### Orcein Shikata (For HbsAg in tissue)



Contains:  
Denatured Ethanol: <70%  
Hydrochloric Acid: <10%

Code	Pack
RRSP117-D	500ml
RRSP117-E	1L
RRSP117-F	2.5L

### Potassium Permanganate (0.5% Aqueous)



Contains:  
Potassium Permanganate:  
<1%

Code	Pack
RRSP132-D	500ml
RRSP132-E	1L
RRSP132-F	2.5L

### Sulphuric Acid 3% Aqueous Solution



Contains:  
Sulphuric Acid: <3%

Code	Pack
RRSP141-D	500ml
RRSP141-E	1L
RRSP141-F	2.5L

### Orcein Shikata ( For HbsAg in tissue)



Contains:  
Denatured Ethanol: <70%  
Hydrochloric Acid: <10%

Code	Pack
RRSP117-D	500ml
RRSP117-E	1L
RRSP117-F	2.5L

### Potassium Permanganate (0.5% Aqueous)



Contains:  
Potassium Permanganate:  
<1%

Code	Pack
RRSP132-D	500ml
RRSP132-E	1L
RRSP132-F	2.5L

### Sulphuric Acid 3% Aqueous Solution



Contains:  
Sulphuric Acid: <3%

Code	Pack
RRSP141-D	500ml
RRSP141-E	1L
RRSP141-F	2.5L

### Oxalic Acid 1% Solution



Contains:  
Oxalic Acid: <1%

Code	Pack
RRSP166-D	500ml
RRSP166-E	1L
RRSP166-F	2.5L

### Denatured Ethanol 70%



Contains:  
Denatured Ethanol: <70%

Code	Pack
RRSP242-D	500ml
RRSP242-E	1L
RRSP242-F	2.5L

### Acid Alcohol 1%



Contains:  
Denatured Ethanol: >99%  
Hydrochloric Acid: <1%

Code	Pack
RRSP187-D	500ml
RRSP187-E	1L
RRSP187-F	2.5L
RRSP187-3E-B	3L Dispenser
RRSP187-G	5L
RRSP187-G-B	5L Dispenser

### Oxalic Acid 1% Solution



Contains:  
Oxalic Acid: <1%

Code	Pack
RRSP166-D	500ml
RRSP166-E	1L
RRSP166-F	2.5L

### Denatured Ethanol 70%



Contains:  
Denatured Ethanol: <70%

Code	Pack
RRSP242-D	500ml
RRSP242-E	1L
RRSP242-F	2.5L



# Special Staining

## Papanicolaou Stain Kit



This stain kit is used for the demonstration of gynaecological cells in cytological preparations

		100 Test	200 Test	500 Test	1000 Test
Code	Kit Extension:	- 100	-200	-500	-1000
RRSK28	Papanicolaou				

### Kit Components

- Papanicolaou EA50
- Papanicolaou OG6
- Haematoxylin Harris



### Papanicolaou Stain EA50



Contains:  
Denatured Ethanol: <45%  
Methanol: <50%

Code	Pack
RRSP121-D	500ml
RRSP121-E	1L
RRSP121-F	2.5L
RRSP121-3E-B	3L Dispenser
RRSP121-G	5L
RRSP121-G-B	5L Dispenser

### Papanicolaou Stain OG6



Contains:  
Methanol: <50%  
Denatured Ethanol: <50%  
Phosphotungstic Acid: <1%

Code	Pack
RRSP122-D	500ml
RRSP122-E	1L
RRSP122-F	2.5L
RRSP122-3E-B	3L Dispenser
RRSP122-G	5L
RRSP122-G-B	5L Dispenser

### Haematoxylin Harris



Contains:  
Denatured Ethanol: <10%  
Sodium Iodate: <1%

Code	Pack
RRSP67-D	500ml
RRSP67-E	1L
RRSP67-F	2.5L
RRSP67-3E-B	3L Dispenser
RRSP67-G	5L
RRSP67-G-B	5L Dispenser

# Special Staining

## PAS Stain Kit (modified McManus 1946)

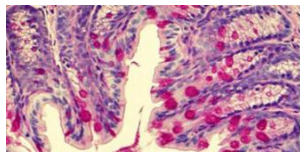


This stain kit is used for the demonstration of neutral mucins, glycogen and some early lipofuchsin. The technique is based upon the reactivity of free aldehyde groups within carbohydrates whereby the Schiff reagent forms a bright red magenta end product

		100 Test	200 Test	500 Test	1000 Test
Code	Kit Extension:	- 100	-200	-500	-1000
RRSK15	PAS				

### Kit Components

- Periodic Acid Solution 1%
- Haematoxylin Harris
- Schiff Reagents (Feulgen)



### Periodic Acid (1% Aqueous)



Contains:  
Periodic Acid : 1%

Code	Pack
RRSP124-D	500ml
RRSP124-E	1L
RRSP124-F	2.5L

### Haematoxylin Harris



Contains:  
Denatured Ethanol: <10%  
Sodium Iodate: <1%

Code	Pack
RRSP67-D	500ml
RRSP67-E	1L
RRSP67-F	2.5L
RRSP67-3E-B	3L Dispenser
RRSP67-G	5L
RRSP67-G-B	5L Dispenser

### Feulgen Stain (Schiff)



Contains:  
Sodium Metabisulphite: <1%  
Hydrochloric Acid: <2%

Code	Pack
RRSP40-D	500ml
RRSP40-E	1L
RRSP40-F	2.5L

# Special Staining



## PAS Stain Kit for fungal cell walls (modified McManus 1946)

This stain kit is based upon the cell walls of fungi being rich in polysaccharides which can be converted by oxidation to dialdehydes and demonstrated with Schiff reagent

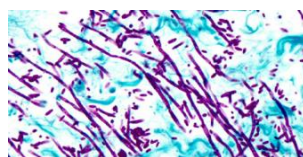
		100 Test	200 Test	500 Test	1000 Test
Code	Kit Extension:	- 100	-200	-500	-1000
RRSK157	PAS				

### Kit Components

Periodic Acid Solution 1%

Light Green 0.2% in 0.2% Acetic Acid

Schiff Reagents (Feulgen)



# Special Staining

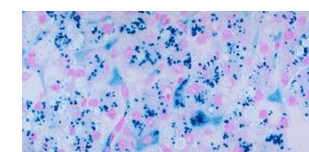


## Perls Stain Kit

This stain kit is used to demonstrate ferric salts in tissue sections. Treatment with an acid ferrocyanide solution will result in the unmasking of ferric iron in the form of hydroxide,  $Fe(OH)_3$ , by dilute hydrochloric acid. The ferric iron then reacts with a dilute potassium ferrocyanide solution to produce an insoluble blue compound, ferric ferrocyanide (Prussian Blue)

		100 Test	200 Test	500 Test	1000 Test
Code	Kit Extension:	- 100	-200	-500	-1000
RRSK16	Perls				

10/10  
UK  
NEQAS



### Kit Components

Perls Stain Solution A - Hydrochloric Acid Solution 2%

Perls Stain Solution B - Potassium Ferrocyanide Solution 2%

Neutral Red Solution 0.1%

### Periodic Acid (1% Aqueous)



Contains:  
Periodic Acid : 1%

Code	Pack
RRSP124-D	500ml
RRSP124-E	1L
RRSP124-F	2.5L

### Light Green 0.2% in 0.2% Acetic Acid



Contains:  
Acetic Acid: <1%

Code	Pack
RRSP525-D	500ml
RRSP525-E	1L
RRSP525-F	2.5L

### Feulgen Stain (Schiff)



Contains:  
Sodium Metabisulphite: <1%  
Hydrochloric Acid: <2%

Code	Pack
RRSP40-D	500ml
RRSP40-E	1L
RRSP40-F	2.5L

### Perls Stain (Solution A)



Contains:  
Hydrochloric Acid: <3%

Code	Pack
RRSP127-D	500ml
RRSP127-E	1L
RRSP127-F	2.5L

### Perls Stain (Solution B)



Contains:  
Potassium Ferrocyanide:  
<1%

Code	Pack
RRSP128-D	500ml
RRSP128-E	1L
RRSP128-F	2.5L

### Neutral Red 0.1%



Contains:  
Denatured Ethanol: <10%  
Neutral Red Powder

Code	Pack
RRSP556-D	500ml
RRSP556-E	1L
RRSP556-F	2.5L
RRSP556-3E-B	3L Dispenser
RRSP556-G	5L
RRSP556-G-B	5L Dispenser

# Special Staining



## Perls Stain Kit (Haematology Version)

This stain kit is used to demonstrate hemosiderin in bone marrow macrophages and iron within sideroblasts

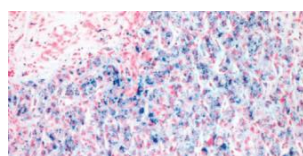
		100 Test	200 Test	500 Test	1000 Test
Code	Kit Extension:	- 100	-200	-500	-1000
RRSK165	Perls (Haematology)				

### Kit Components

Perls Stain A: Hydrochloric Acid Solution 2%

Perls Stain B: Potassium Ferrocyanide Solution 2%

Neutral Red Solution 0.5%



### Perls Stain (Solution A)



Contains:  
Hydrochloric Acid: <3%

Code	Pack
RRSP127-D	500ml
RRSP127-E	1L
RRSP127-F	2.5L

### Perls Stain (Solution B)



Contains:  
Potassium Ferrocyanide:  
<1%

Code	Pack
RRSP128-D	500ml
RRSP128-E	1L
RRSP128-F	2.5L

### Neutral Red (0.5% Aqueous)



Contains:  
Denatured Ethanol: <10%  
Neutral Red Powder

Code	Pack
RRSP556-D	500ml
RRSP556-E	1L
RRSP556-F	2.5L
RRSP556-3E-B	3L Dispenser
RRSP556-G	5L
RRSP556-G-B	5L Dispenser

# Special Staining

## Perls Van Gieson Stain Kit

This stain kit demonstrates ferric iron, collagen and connective tissue in sections

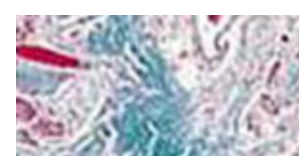
		100 Test	200 Test	500 Test	1000 Test
Code	Kit Extension:	- 100	-200	-500	-1000
RRSK60	Perls Van Gieson				

### Kit Components

Perls Stain Solution A - Hydrochloric Acid Solution 2%

Perls Stain Solution B - Potassium Ferrocyanide Solution 2%

Van Gieson Extra



### Perls Stain (Solution A)



Contains:  
Hydrochloric Acid: <3%

Code	Pack
RRSP127-D	500ml
RRSP127-E	1L
RRSP127-F	2.5L

### Perls Stain (Solution B)



Contains:  
Potassium Ferrocyanide:  
<1%

Code	Pack
RRSP128-D	500ml
RRSP128-E	1L
RRSP128-F	2.5L

### Van Gieson Extra



Contains:  
Picric Acid: <2.5%

Code	Pack
RRSP539-D	500ml
RRSP539-E	1L
RRSP539-F	2.5L



# Special Staining

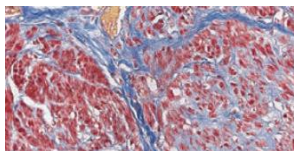
## Picro Mallory Trichrome Stain Kit

This stain kit allows the selective demonstration of muscle, collagen fibres and erythrocytes. This trichrome stain uses 3 dyes of differing molecular size

		100 Test	200 Test	500 Test	1000 Test
Code	Kit Extension:	- 100	-200	-500	-1000
RRSK90	Picro Mallory Trichrome				

### Kit Components

Glacial Acetic Acid 0.5% Aqueous x 2	Picro Mallory Solution B
Saturated Aqueous Picric Acid Solution	Phosphotungstic Acid 1% Solution
Picro Mallory Solution A	



### Acetic Acid 0.5% Solution

Contains:  
Acetic Acid: <1%

Code	Pack
RRSP191-D	500ml
RRSP191-E	1L
RRSP191-F	2.5L

### Picric Acid 2.1% Saturated Aqueous Solution

Contains:  
Picric Acid: <2.1% (Saturated)

Code	Pack
RRSP143-D	500ml
RRSP143-E	1L
RRSP143-F	2.5L

### Picro Mallory Solution A

Contains:  
Acid Fuchsin

Code	Pack
RRSP231-D	500ml
RRSP231-E	1L
RRSP231-F	2.5L

### Picro Mallory Solution B

Contains:  
Phosphotungstic Acid  
Aniline Blue  
Orange G

Code	Pack
RRSP232-D	500ml
RRSP232-E	1L
RRSP232-F	2.5L

### Phosphotungstic Acid 1% Solution

Contains:  
Phosphotungstic Acid: <1%

Code	Pack
RRSP172-D	500ml
RRSP172-E	1L
RRSP172-F	2.5L

# Special Staining

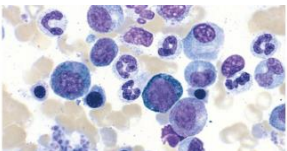
## Rapi-Diff II Stain Kit

This stain kit is used for the rapid differential evaluation of haematological and cytological smears

		100 Test	200 Test	500 Test	1000 Test
Code	Kit Extension:	- 100	-200	-500	-1000
RRSK1	Rapi-Diff II				

### Kit Components

Rapi-Diff II Stain - Solution A
Rapi-Diff II Stain - Solution B
Rapi-Diff II Stain - Solution C



### Rapi-Diff II Stain - Solution A

Contains:  
Methanol: >99%

Code	Pack
RRSP133-D	500ml
RRSP133-E	1L
RRSP133-F	2.5L
RRSP133-3E-B	3L Dispenser
RRSP133-G	5L
RRSP133-G-B	5L Dispenser

### Rapi-Diff II Stain - Solution B

Contains:  
Eosin Y  
Mixed Phosphates

Code	Pack
RRSP134-D	500ml
RRSP134-E	1L
RRSP134-F	2.5L
RRSP134-3E-B	3L Dispenser
RRSP134-G	5L
RRSP134-G-B	5L Dispenser

### Rapi-Diff II Stain - Solution C

Contains:  
Methylene Blue  
Azur I  
Mixed Phosphates

Code	Pack
RRSP135-D	500ml
RRSP135-E	1L
RRSP135-F	2.5L
RRSP135-3E-B	3L Dispenser
RRSP135-G	5L
RRSP135-G-B	5L Dispenser

# Special Staining

## Rapi-Diff II Stain Kit Extra

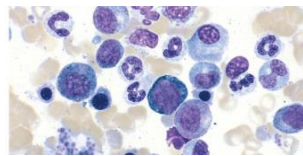
This stain kit is for the rapid differential evaluation of haematological and cytological smears



		100 Test	200 Test	500 Test	1000 Test
Code	Kit Extension:	- 100	-200	-500	-1000
RRSK190	Rapi-Diff II Extra				

### Kit Components

Rapi-Diff II Stain - Solution A	Buffer Tablets pH 6.8 (Each Tablet make 1L of buffer)
Rapi-Diff II Stain - Solution B	
Rapi-Diff II Stain - Solution C	



### Rapi-Diff II Stain - Solution A

Contains:  
Methanol: >99%



Code	Pack
RRSP133-D	500ml
RRSP133-E	1L
RRSP133-F	2.5L
RRSP133-3E-B	3L Dispenser
RRSP133-G	5L
RRSP133-G-B	5L Dispenser

### Rapi-Diff II Stain - Solution B

Contains:  
Eosin Y  
Mixed Phosphates



Code	Pack
RRSP134-D	500ml
RRSP134-E	1L
RRSP134-F	2.5L
RRSP134-3E-B	3L Dispenser
RRSP134-G	5L
RRSP134-G-B	5L Dispenser

### Rapi-Diff II Stain - Solution C

Contains:  
Methylene Blue  
Azur I  
Mixed Phosphates



Code	Pack
RRSP135-D	500ml
RRSP135-E	1L
RRSP135-F	2.5L
RRSP135-3E-B	3L Dispenser
RRSP135-G	5L
RRSP135-G-B	5L Dispenser

### Buffer Tablets pH 6.8 to make 1L (1000ml)

Dissolve 1 tablet in 1L distilled water  
pH at dilution: 6.8 +/- 0.2%



Code	Pack
AE32-001	50 Pack
AE32-002	100 Pack
AE32-003	1000 Pack

# Special Staining

## Reticulin Stain Kit (with Gold Chloride)

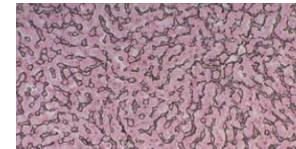
This stain kit is used to demonstrate reticulin fibres. The Gordon & Sweet method uses metal impregnation providing excellent contrast so even the finest fibres can be seen



		100 Test	200 Test
Code	Kit Extension:	- 100	-200
RRSK105	Reticulin (with Gold Chloride)		

### Kit Components

Potassium Permanganate 0.5% Solution x 2	Sodium Hydroxide 3% Solution
Sulphuric Acid 3% Solution	Formaldehyde 10% (v/v) Solution Unbuffered
Oxalic Acid 1% Solution	Sodium Thiosulphate 5% Solution
Ferric Ammonium Sulphate 2.5% Solution	Gold Chloride 0.2% Solution
Silver Nitrate 10% Solution	Neutral Red 0.1%
Ammonia 33% Solution	



### Potassium Permanganate (0.5% Aqueous)



Contains:  
Potassium Permanganate:  
<1%

Code	Pack
RRSP132-D	500ml
RRSP132-E	1L
RRSP132-F	2.5L

### Sulphuric Acid 3% Aqueous Solution



Contains:  
Sulphuric Acid: <3%

Code	Pack
RRSP141-D	500ml
RRSP141-E	1L
RRSP141-F	2.5L

### Oxalic Acid 1% Solution



Contains:  
Oxalic Acid: <1%

Code	Pack
RRSP166-D	500ml
RRSP166-E	1L
RRSP166-F	2.5L

### Ferric Ammonium Sulphate 2.5% (Iron Alum)



Contains:  
Ferric Ammonium Sulphate:  
<2%

Code	Pack
RRSP501-D	500ml
RRSP501-E	1L
RRSP501-F	2.5L

### Silver Nitrate 10% Solution



Contains:  
Silver Nitrate: <10%

Code	Pack
RRSP173-B	100ml
RRSP173-C	250ml
RRSP173-D	500ml

### Ammonia Solution 33%



Minimum Assay (As NH<sub>3</sub>):  
33.0-34.0%  
Molecular Formula: NH<sub>4</sub>OH

Code	Pack
GPC9001-D	500ml
GPC9001-E	1L
GPC9001-F	2.5L

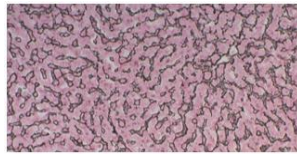
# Special Staining

## Reticulin Stain Kit (with Gold Chloride)

### Kit Components Continued

Potassium Permanganate 0.5% Solution x 2	Sodium Hydroxide 3% Solution
Sulphuric Acid 3% Solution	Formaldehyde 10% (v/v) Solution Unbuffered
Oxalic Acid 1% Solution	Sodium Thiosulphate 5% Solution
Ferric Ammonium Sulphate 2.5% Solution	Gold Chloride 0.2% Solution
Silver Nitrate 10% Solution	Neutral Red 0.1%
Ammonia 33% Solution	

10/10  
UK  
NEQAS



### Sodium Hydroxide Solution 3%



Contains:  
Sodium Hydroxide: <3%

Code	Pack
RRSP504-D	500ml
RRSP504-E	1L
RRSP504-F	2.5L

### Formaldehyde 10% Solution Unbuffered



Contains:  
Formaldehyde: <10%  
(unbuffered)

Code	Pack
RRSP505-D	500ml
RRSP505-E	1L
RRSP505-F	2.5L

### Sodium Thiosulphate 5% Solution



Contains:  
Sodium Thiosulphate: <5%

Code	Pack
RRSP176-D	500ml
RRSP176-E	1L
RRSP176-F	2.5L

### Gold Chloride 0.2% Aqueous Solution



Contains:  
Gold Chloride: 0.2%

Code	Pack
RRSP511-B	100ml
RRSP511-C	250ml
RRSP511-D	500ml

### Neutral Red 0.1%



Contains:  
Denatured Ethanol: <10%  
Neutral Red Powder

Code	Pack
RRSP556-D	500ml
RRSP556-E	1L
RRSP556-F	2.5L
RRSP556-3E-B	3L Dispenser
RRSP556-G	5L
RRSP556-G-B	5L Dispenser

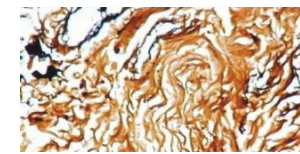
# Special Staining

## Reticulin Stain Kit (without Gold Chloride)



This stain kit is used to demonstrate reticulin fibres. The Gordon & Sweet method uses metal impregnation providing excellent contrast so even the finest fibres can be seen

		100 Test	200 Test
Code	Kit Extension:	- 100	-200
RRSK102	Reticulin (without Gold Chloride)		



### Kit Components

Potassium Permanganate 0.5% Solution x 2	Ammonia 33% Solution
Sulphuric Acid 3% Solution	Sodium Hydroxide 3% Solution
Oxalic Acid 1% Solution	Formaldehyde 10% (v/v) Solution Unbuffered
Ferric Ammonium Sulphate 2.5% Solution	Sodium Thiosulphate 5% Solution
Silver Nitrate 10% Solution	Neutral Red 0.1%

### Potassium Permanganate (0.5% Aqueous)



Contains:  
Potassium Permanganate:  
<1%

Code	Pack
RRSP132-D	500ml
RRSP132-E	1L
RRSP132-F	2.5L

### Sulphuric Acid 3% Aqueous Solution



Contains:  
Sulphuric Acid: <3%

Code	Pack
RRSP141-D	500ml
RRSP141-E	1L
RRSP141-F	2.5L

### Oxalic Acid 1% Solution



Contains:  
Oxalic Acid: <1%

Code	Pack
RRSP166-D	500ml
RRSP166-E	1L
RRSP166-F	2.5L

### Ferric Ammonium Sulphate 2.5% (Iron Alum)



Contains:  
Ferric Ammonium Sulphate:  
<2%

Code	Pack
RRSP501-D	500ml
RRSP501-E	1L
RRSP501-F	2.5L

### Silver Nitrate 10% Solution



Contains:  
Silver Nitrate: <10%

Code	Pack
RRSP173-B	100ml
RRSP173-C	250ml
RRSP173-D	500ml

### Ammonia Solution 33%



Minimum Assay (As NH<sub>3</sub>):  
33.0-34.0%  
Molecular Formula: NH<sub>4</sub>OH

Code	Pack
GPC9001-D	500ml
GPC9001-E	1L
GPC9001-F	2.5L

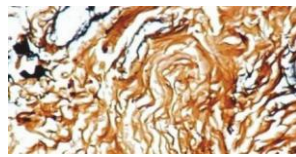


# Special Staining

## Reticulin Stain Kit (without Gold Chloride)

### Kit Components Continued

Potassium Permanganate 0.5% Solution x 2	Ammonia 33% Solution
Sulphuric Acid 3% Solution	Sodium Hydroxide 3% Solution
Oxalic Acid 1% Solution	Formaldehyde 10% (v/v) Solution Unbuffered
Ferric Ammonium Sulphate 2.5% Solution	Sodium Thiosulphate 5% Solution
Silver Nitrate 10% Solution	Neutral Red 0.1%



### Sodium Hydroxide Solution 3%

Contains:  
Sodium Hydroxide: <3%



Code	Pack
RRSP504-D	500ml
RRSP504-E	1L
RRSP504-F	2.5L

### Formaldehyde 10% Solution Unbuffered

Contains:  
Formaldehyde: <10%  
(unbuffered)



Code	Pack
RRSP505-D	500ml
RRSP505-E	1L
RRSP505-F	2.5L

### Sodium Thiosulphate 5% Solution

Contains:  
Sodium Thiosulphate: <5%



Code	Pack
RRSP176-D	500ml
RRSP176-E	1L
RRSP176-F	2.5L

### Neutral Red 0.1%

Contains:  
Denatured Ethanol: <10%  
Neutral Red Powder



Code	Pack
RRSP556-D	500ml
RRSP556-E	1L
RRSP556-F	2.5L
RRSP556-3E-B	3L Dispenser
RRSP556-G	5L
RRSP556-G-B	5L Dispenser

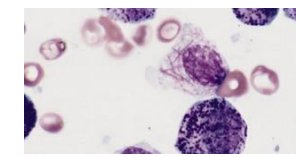
# Special Staining

## Sudan Black Stain Kit (Haematology Version)

This stain kit is used for staining peripheral blood and bone marrow smears to identify granulocytic and monocytic components of abnormal haemopoietic cells. The sudan black B cannot be extracted from the stained granules by organic dye solvents and gives comparable staining to that of MPO staining



		100 Test	200 Test	500 Test	1000 Test
Code	Kit Extension:	- 100	-200	-500	-1000
RRSK61	Sudan Black B				



### Kit Components

Sudan Black Stain in 70% Ethanol	Haemalum Mayer
Ethanol 70% solution	
Buffer Mordant Solution	

### Sudan Black Stain in 70% Denatured Ethanol

Contains:  
Denatured Ethanol: >70%  
Sudan III

Code	Pack
RRSP140-D	500ml
RRSP140-E	1L
RRSP140-F	2.5L

### Denatured Ethanol 70%

Contains:  
Denatured Ethanol: <70%



Code	Pack
RRSP242-D	500ml
RRSP242-E	1L
RRSP242-F	2.5L

### Buffer Solution (Sudan Black)

Contains:  
Denatured Ethanol: <20%  
Phenol: <15%



Code	Pack
RRSP170-D	500ml
RRSP170-E	1L
RRSP170-F	2.5L

### Haemalum Mayer

Contains:  
Denatured Ethanol: <10%  
Chloral Hydrate: <5%  
Sodium Iodate: <1%



Code	Pack
RRSP60-D	500ml
RRSP560-E	1L
RRSP560-F	2.5L

# Special Staining

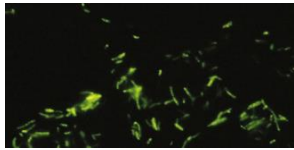
## TB Fluorescent Stain Kit I (Auramine Phenol Lempert)

This stain kit is used for the demonstration of M-Tuberculosis and other acid fast organisms in tissue sections and smears. The protocol uses auramine O which is a yellow cationic dye used as a fluorochrome which attaches to the tubercle bacilli and is visualised by use of fluorescent microscopy

		100 Test	200 Test	500 Test	1000 Test
Code	Kit Extension:	- 100	-200	-500	-1000
RRSK18	Auramine Phenol Lempert				

### Kit Components

- Auramine Phenol Lempert Solution
- Auramine Phenol Differentiator
- Potassium Permanganate 0.5% Aqueous Solution



### Auramine Phenol (Lempert)

Contains:  
Denatured Ethanol: <35%  
Phenol: <3%  
Auramine O: <1%

Code	Pack
RRSP11-D	500ml
RRSP11-E	1L
RRSP11-F	2.5L

### Auramine Differentiator

Contains:  
Denatured Ethanol: <75%  
Hydrochloric Acid: <1%

Code	Pack
RRSP12-D	500ml
RRSP12-E	1L
RRSP12-F	2.5L

### Potassium Permanganate (0.5% Aqueous)

Contains:  
Potassium Permanganate: <1%

Code	Pack
RRSP132-D	500ml
RRSP132-E	1L
RRSP132-F	2.5L

# Special Staining

## TB Fluorescent Stain Kit II

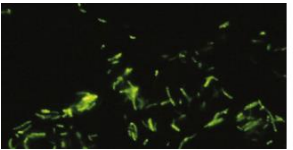
This stain kit is used for the demonstration of M-Tuberculosis and other acid fast organisms in tissue sections and smears. The protocol uses auramine O which is a yellow cationic dye used as a fluorochrome which attaches to the tubercle bacilli and is visualised by use of fluorescent microscopy



		100 Test	200 Test	500 Test	1000 Test
Code	Kit Extension:	- 100	-200	-500	-1000
RRSK19	TB Fluorescent II				

### Kit Components

- Auramine Rhodamine Phenol Lempert Solution
- Auramine Phenol Differentiator
- Potassium Permanganate 0.5% Aqueous Solution



### Auramine Rhodamine Phenol

Contains:  
Phenol: <10%  
Auramine O: <3%

Code	Pack
RRSP9-D	500ml
RRSP9-E	1L
RRSP9-F	2.5L

### Auramine Differentiator

Contains:  
Denatured Ethanol: <75%  
Hydrochloric Acid: <1%

Code	Pack
RRSP12-D	500ml
RRSP12-E	1L
RRSP12-F	2.5L

### Potassium Permanganate (0.5% Aqueous)

Contains:  
Potassium Permanganate: <1%

Code	Pack
RRSP132-D	500ml
RRSP132-E	1L
RRSP132-F	2.5L

# Special Staining

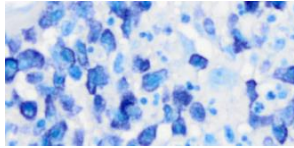
## Toluidine Blue Stain Kit

This stain kit is used for the demonstration of mast cells in tissue sections. The granules within the cytoplasm of mast cells are metachromatic. The metachromatic staining is due to pH, dye concentration and temperature of the basic dye

		100 Test	200 Test
Code	Kit Extension:	- 100	-200
RRSK609	Toluidine Blue		

### Kit Components

- Toluidine Blue 1% in 70% alcohol
- Sodium Chloride 0.9% aqueous x 5



### Toluidine Blue 1% in 70% Alcohol



Contains:  
Denatured Ethanol: 70%  
Toluidine Blue: 1%

Code	Pack
RRSP609-D	500ml
RRSP609-E	1L
RRSP609-F	2.5L

### Sodium Chloride 0.9% Aqueous (Saline Solution)



Contains:  
Sodium Chloride: 0.85-0.95%

Code	Pack
RRSP561-D	500ml
RRSP561-E	1L
RRSP561-F	2.5L

# Special Staining

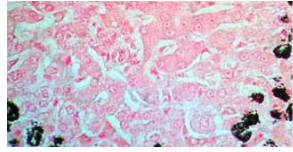
## Von Kossa Stain Kit

This stain kit is used to visualise calcium deposits in tissue sections. The sections are treated with a silver nitrate solution and silver is deposited by replacing the calcium reduced by strong light which can then be visualised as metallic silver

		100 Test	200 Test	500 Test	1000 Test
Code	Kit Extension:	- 100	-200	-500	-1000
RRSK38	Von Kossa				

### Kit Components

- Silver Nitrate 5% solution
- Sodium Thiosulphate 5% solution
- Neutral Red (0.5% Aqueous) solution



### Silver Nitrate 5% Solution



Contains:  
Silver Nitrate: <5%

Code	Pack
RRSP44-B	100ml
RRSP44-C	250ml
RRSP44-D	500ml

### Sodium Thiosulphate 5% Solution



Contains:  
Sodium Thiosulphate: <5%

Code	Pack
RRSP176-D	500ml
RRSP176-E	1L
RRSP176-F	2.5L

### Neutral Red (0.5% Aqueous)



Contains:  
Denatured Ethanol: <10%  
Neutral Red Powder

Code	Pack
RRSP109-D	500ml
RRSP109-E	1L
RRSP109-F	2.5L
RRSP109-3E-B	3L Dispenser
RRSP109-G	5L
RRSP109-G-B	5L Dispenser



# Special Staining



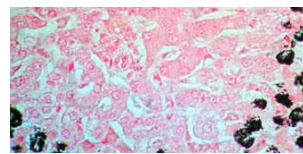
## Von Kossa Stain Kit (Strong)

This stain kit is used to visualise calcium deposits in tissue sections. The sections are treated with a silver nitrate solution and silver is deposited by replacing the calcium reduced by strong light which can then be visualised as metallic silver

		100 Test	200 Test	500 Test	1000 Test
Code	Kit Extension:	- 100	-200	-500	-1000
RRSK39	Von Kossa (Strong)				

### Kit Components

- Silver Nitrate 10% solution
- Sodium Thiosulphate 5% solution
- Neutral Red (0.5% Aqueous) solution



### Silver Nitrate 10% Solution



Contains:  
Silver Nitrate: <10%

Code	Pack
RRSP173-B	100ml
RRSP173-C	250ml
RRSP173-D	500ml

### Sodium Thiosulphate 5% Solution



Contains:  
Sodium Thiosulphate: <5%

Code	Pack
RRSP176-D	500ml
RRSP176-E	1L
RRSP176-F	2.5L

### Neutral Red (0.5% Aqueous)



Contains:  
Denatured Ethanol: <10%  
Neutral Red Powder

Code	Pack
RRSP109-D	500ml
RRSP109-E	1L
RRSP109-F	2.5L
RRSP109-3E-B	3L Dispenser
RRSP109-G	5L
RRSP109-G-B	5L Dispenser

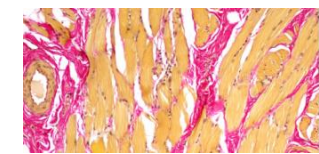
# Special Staining



## Weigerts Haematoxylin/Van Gieson Stain Kit

This stain kit is used for the demonstration of collagen fibres. Van Gieson's method is a mixture of two anionic dyes which impart one colour to collagen and another to cytoplasm including muscle fibres and erythrocytes. By using an iron haematoxylin (Weigert's) which is an acid resistant nuclear stain, the Van Gieson counterstain produces the differential staining of the collagen and cytoplasm

9/10  
UK  
NEQAS



		100 Test	200 Test	500 Test	1000 Test
Code	Kit Extension:	- 100	-200	-500	-1000
RRSK22	Weigerts Haematoxylin/Van Gieson				

### Kit Components

- Haematoxylin Weigert Stain A Acid Alcohol 0.5%
- Haematoxylin Weigert Stain B
- Van Gieson Extra Stain

### Haematoxylin Weigerts A



Contains:  
Denatured Ethanol: >99%

Code	Pack
RRSP72-D	500ml
RRSP72-E	1L
RRSP72-F	2.5L

### Haematoxylin Weigerts B



Contains:  
Hydrochloric Acid: <1%  
Ferric Chloride: <1%

Code	Pack
RRSP73-D	500ml
RRSP73-E	1L
RRSP73-F	2.5L

### Van Gieson Extra



Contains:  
Picric Acid: <2.5%

Code	Pack
RRSP539-D	500ml
RRSP539-E	1L
RRSP539-F	2.5L

### Acid Alcohol 0.5%



Contains:  
Denatured Ethanol: >99%  
Hydrochloric Acid: <1%

Code	Pack
RRSP186-D	500ml
RRSP186-E	1L
RRSP186-F	2.5L
RRSP186-3E-B	3L Dispenser
RRSP186-G	5L
RRSP186-G-B	5L Dispenser

# Special Staining

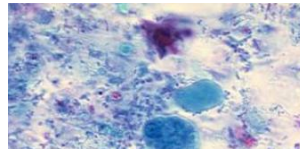
## Wheatleys Trichrome Stain Kit

This stain kit is commonly used for the staining of fecal films to aid in the diagnosis of intestinal protozoa

		100 Test	200 Test	500 Test	1000 Test
Code	Kit Extension:	- 100	-200	-500	-1000
RRSK63	Wheatleys Trichrome				

### Kit Components

Wheatley's Trichrome Stain	Iodine 2% Alcoholic
Wheatley's Differentiator	
Denatured Ethanol 70%	



### Wheatley's Trichrome Stain



Contains:  
Acetic Acid: < 5%  
Phosphotungstic Acid: <5%

Code	Pack
RRSP3602-D	500ml
RRSP3602-E	1L
RRSP3602-F	2.5L

### Wheatley's Differentiator



Contains:  
Denatured Ethanol: >90%  
Acetic Acid: <1%

Code	Pack
RRSP5699-D	500ml
RRSP5699-E	1L
RRSP5699-F	2.5L

### Denatured Ethanol 70%



Contains:  
Denatured Ethanol: <70%

Code	Pack
RRSP242-D	500ml
RRSP242-E	1L
RRSP242-F	2.5L

### Iodine 2% Alcoholic (for Wheatley's Trichrome)



Contains:  
Denatured Ethanol: >99%  
Iodine: <2%

Code	Pack
RRSP5698-D	500ml
RRSP5698-E	1L
RRSP5698-F	2.5L

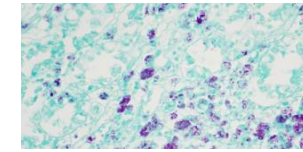
# Special Staining

## ZN Stain Kit (Malachite Green)

This stain kit is used for the staining of Mycobacterium tuberculosis and other acid fast organisms. The cell walls of Mycobacteria are not readily penetrated so in order to stain Mycobacteria the basic fuchsin is mixed with phenol to make a powerful stain. Heat can be applied to "force" the stain into the bacillus. Once stained the bacillus is very resistant to decolourisation retaining the stain even when the rest of the preparation has been decolourised



		100 Test	200 Test	500 Test	1000 Test
Code	Kit Extension:	- 100	-200	-500	-1000
RRSK23	Malachite Green				



### Kit Components

Carbol Fuchsin ZN
TB Differentiator x 2
Malachite Green 0.5% Aqueous

### Carbol Fuchsin (ZN)



Contains:  
Denatured Ethanol: <15%  
Phenol: <5%

Code	Pack
RRSP17-D	500ml
RRSP17-E	1L
RRSP17-F	2.5L

### TB Differentiator



Contains:  
Denatured Ethanol: >97%  
Hydrochloric Acid: <3%

Code	Pack
RRSP145-D	500ml
RRSP145-E	1L
RRSP145-F	2.5L

### Malachite Green (0.5% Aqueous)



Contains:  
Denatured Ethanol: <5%  
Malachite Green: <1%

Code	Pack
RRSP86-D	500ml
RRSP86-E	1L
RRSP86-F	2.5L

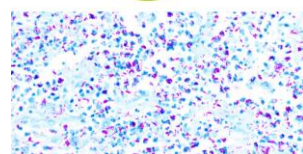


## ZN Stain Kit (Methylene Blue)

This stain kit is used for the staining of Mycobacterium tuberculosis and other acid fast organisms. The cell walls of Mycobacteria are not readily penetrated so in order to stain Mycobacteria the basic fuchsin is mixed with phenol to make a powerful stain. Heat can be applied to "force" the stain into the bacillus. Once stained the bacillus is very resistant to decolourisation retaining the stain even when the rest of the preparation has been decolourised

		100 Test	200 Test	500 Test	1000 Test
Code	Kit Extension:	- 100	-200	-500	-1000
RRSK24	Methylene Blue				

10/10  
UK  
NEQAS



### Kit Components

Carbol Fuchsin ZN
TB Differentiator x 2
Methylene Blue (AFB)

### Carbol Fuchsin (ZN)



Contains:  
Denatured Ethanol: <15%  
Phenol: <5%

Code	Pack
RRSP17-D	500ml
RRSP17-E	1L
RRSP17-F	2.5L

### TB Differentiator



Contains:  
Denatured Ethanol: >97%  
Hydrochloric Acid: <3%

Code	Pack
RRSP145-D	500ml
RRSP145-E	1L
RRSP145-F	2.5L

### Methylene Blue Solution (AFB)



Contains:  
Denatured Ethanol: <30%  
Methylene Blue  
Potassium Hydroxide <1%

Code	Pack
RRSP1789-D	500ml
RRSP1789-E	1L
RRSP1789-F	2.5L

## Acetic Acid 99.85% ACS

Cas No: 64-19-7	Einecs: 200-580-7	UN2789	Flash Point: 40°C
-----------------	-------------------	--------	-------------------



Minimum Assay: >99.85% w/w  
Molecular Formula: CH<sub>3</sub>COOH  
Molecular Weight: 60.05  
Freezing Point: 16.35 deg C  
Colour: <5HU  
Non-Volatile Matter: <0.003% w/w  
Permanganate Time: min 2 hours

Code	Pack
GPC8005-E	1L
GPC8005-3E	3x1L
GPC8005-6E	6x1L
GPC8005-12E	12 x 1L



## Acetone 99.5% BP

Cas No: 67-64-1	Einecs: 200-662-2	UN1090	Flash Point: -20°C
-----------------	-------------------	--------	--------------------



Minimum Assay: 99.50%  
Molecular Formula: C<sub>3</sub>H<sub>6</sub>O  
Molecular Weight: 58.08g/mol  
Melting Point: -94°C  
Water: <0.3%  
Acidity (as Acetic Acid): <0.002%

Code	Pack
GPS1003-E	1L
GPS1003-12E	12x1L
GPS1003-F	2.5L
GPS1003-6F	6x2.5L



## Borax Decahydrate 99.5-105% ACS

Cas No: 1303-96-4	Einecs: 215-540-4		
-------------------	-------------------	--	--



Minimum Assay: 99.9-100.9%  
Molecular Formula: Na<sub>2</sub>B<sub>4</sub>O<sub>7</sub>·10H<sub>2</sub>O  
Molecular Weight: 381.37 g/mol  
Melting Point: 169 °C  
Density at 25°C (g/cm<sup>3</sup>): 1.73  
pH (0.01M soln 25°C): 9.15-9.20  
Sodium Oxide (Na<sub>2</sub>O): 16.4-17.0%  
Chloride (Cl): 500ppm  
Iron Oxide (Fe<sub>2</sub>O<sub>3</sub>): 20ppm  
Sulphates (SO<sub>4</sub>): 400ppm  
Water Insoluble Matter: 300ppm  
Mesh Size: 2.36mm

Code	Pack
GPC8102-5X	500gm
GPC8102-Y	1Kg
GPC8102-5Y	5Kg
GPC8102-10Y	10Kg



## Charcoal Activated Powder DCL320

Cas No: 7440-44-0	Einecs: 231-153-3		
-------------------	-------------------	--	--

Molecular Weight: 12.01  
Molasses Decolour: >500 (TM3)  
Moisture as packed: Particle Size: 60-86  
(Total Surface Density( N<sub>2</sub> BET Method): <1000m<sup>3</sup>/g  
Methylene Blue: Ash: <4% w/w  
Water Extractables: <0.5%

Code	Pack
DCL320-X	100gm
DCL320-5X	500gm
DCL320-Y	1Kg

## Chloroform 99.95% ACS

Cas No: 67-66-3	Einecs: 200-663-8	UN1888	
-----------------	-------------------	--------	--



Minimum Assay: 99.95%  
Molecular Formula: CHCl<sub>3</sub>  
Molecular Weight: 119.38g/mol  
Melting Point: -63°C  
Boiling Point: 61.2°C  
Water: <50mg/Kg  
Residue on evaporation: <10mg/Kg  
Acidity (as HCl): <5mg/Kg

Code	Pack
GPS9009-D	500ml
GPS9009-E	1L
GPS9009-F	2.5L
GPS9009-G	5L



## di-Sodium Hydrogen Phosphate Anhydrous 98.5% ACS

Cas No: 7558-79-4	Einecs: 231-448-7		
-------------------	-------------------	--	--

Minimum Assay: 99.8%  
Molecular Formula: HNa<sub>2</sub>O<sub>4</sub>P  
Molecular Weight: 141.96  
Appearance Form: White Crystalline Powder  
pH: 8.9 - 9.2 at 50 g/l at 25 °C  
PO<sub>2</sub> Content: 49.7%  
Vapour density: 4.90 - (Air = 1.0)  
Relative density: 1.520 g/cm<sup>3</sup>  
Water solubility: soluble  
Relative vapour density 4.90 - (Air = 1.0)

Code	Pack
GPC8034-2X	250gm
GPC8034-5X	500gm
GPC8034-Y	1Kg
GPC8034-5Y	5Kg

## Distilled Water

Cas No: 7732-18-5			
-------------------	--	--	--

Molecular Formula: H<sub>2</sub>O  
Molecular Weight: 18.02  
Boiling Point: 100 deg C  
Refractive Index: n<sub>D</sub> 1.34(lit.)  
Conductivity: Resistivity: >1MΩ.cm  
pH: 5.8-7.5  
Nitrite (NO<sub>2</sub>):  
Nitrate (NO<sub>3</sub>):  
Silicon (Si): <0.04gm/L  
Silicates (SiO<sub>2</sub>): Sodium (Na): Chloride (Cl):  
TOC: < 0.15 mg/L  
Endotoxins: TVC (2 Days): 0 cfu/ml  
TVC (3 Days): 0 cfu/ml

Code	Pack
GPC9023-D	500ml
GPC9023-E	1L
GPC9023-F	2.5L
GPC9023-G	5L
GPC9023-K	25L

## D-Limonene 96%

Cas No: 5989-27-5	Einecs: 227-813-5	UN2052	
-------------------	-------------------	--------	--



Minimum Assay: 96%  
Molecular Formula: C<sub>10</sub>H<sub>16</sub>  
Molecular Weight: 136.24 g/mol  
Boiling Point: 170-180 °C  
Refractive Index: 1.470-1.475  
Water: <0.5%  
Optical Rotation(at 25 °C): 85-100  
Odour: Orange/Citrus Fruit



Code	Pack
GPS8889-D	500ml
GPS8889-E	1L
GPS8889-F	2.5L
GPS8889-G	5L

## EDTA Tetrasodium Salt Dihydrate 99.5%

Cas No: 10378-23-1	Einecs: 200-573-9		
--------------------	-------------------	--	--



Minimum Assay: >99.5-99.9%  
Molecular Formula: C<sub>10</sub>H<sub>12</sub>N<sub>2</sub>Na<sub>4</sub>O<sub>8</sub>·2H<sub>2</sub>O  
Molecular weight: 416.20  
Solubility: Water Soluble 0.1 g/ml  
pH: 10.5-11.5



Iron (Fe): <0.001%  
Heavy Metals (as Pb): <0.002%  
Chloride (Cl): <0.01%  
Chelating Value: >234

Code	Pack
GPC9995-X	100gm
GPC9995-5X	500gm
GPC9995-Y	1Kg
GPC9995-5Y	5Kg


ISO15189 compliant products  
*simply* delivering consistency  
and reliability to Life Sciences



# Chemicals & Reagents

## Ethanol Denatured 70%


Cas No: 67-17-5	Einecs: 200-578-6	UN3082	Flash Point: 14°C
-----------------	-------------------	--------	-------------------

 Ethanol Content: 70%  
 Molecular Formula: C<sub>2</sub>H<sub>6</sub>O  
 Molecular Weight: 46.07 g/mol  
 Water: <0.1%  
 Acidity: <0.001%  
 Aldehydes & Ketones: <0.07%  
 Methanol (as denaturant): <3%

Code	Pack
GPS9018-D	500ml
GPS9018-E	1L
GPS9018-F	2.5L
GPS9018-G	5L

## Ethanol Denatured 99.9%


Cas No: 7-17-5	Einecs: 200-78-6	UN1170	Flash Point: 14°C
----------------	------------------	--------	-------------------

 Minimum Assay: >99.9%  
 Molecular Formula: C<sub>2</sub>H<sub>6</sub>O  
 Molecular Weight: 46.07 g/mol  
 Water: <0.1%  
 Acidity: <0.001%  
 Aldehydes & Ketones: <0.07%  
 Methanol (as denaturant): 3-5%

Code	Pack
GPS1000-D	500ml
GPS1000-E	1L
GPS1000-F	2.5L
GPS1000-G	5L

## Ethylenediaminetetraacetic acid 98-100.5%


Cas No: 60-00-4	Einecs: 200-449-4		
-----------------	-------------------	--	--

 Minimum Assay: 99.34%  
 Molecular Formula: C<sub>10</sub>H<sub>16</sub>N<sub>2</sub>O<sub>8</sub>  
 Molecular Weight: 292.24  
 Melting Point: 245°C  
 pH: 2.85 (50mg/L @ 25 deg C)  
 Water: <0.5%  
 Heavy Metals (as Pb): <0.0004%  
 Iron (Fe): <0.0005%  
 Sulphates (SO<sub>4</sub>): <0.02%  
 Chelation Value: 340

Code	Pack
GPC9996-X	100gm
GPC9996-5X	500gm
GPC9996-Y	1Kg
GPC9996-5Y	5Kg

## Formaldehyde 37% ACS

Cas No: 50-00-0	Einecs: 200-001-8	UN2209	Flash Point: 62°C
-----------------	-------------------	--------	-------------------

 Minimum Assay: 36.3-36.9%  
 Molecular Formula: CH<sub>2</sub>O  
 Molecular Weight: 30.03 g/mol  
 Formic Acid: <0.05%  
 Methanol: 6.0-8.0%  
 Ash: <0.01%  
 Iron (Fe): <2ppm  
 Copper: <2ppm

Code	Pack
GPC8044-D	500ml
GPC8044-E	1L
GPC8044-F	2.5L
GPC8044-G	5L

## Glycerol 99.5% ACS


Cas No: 56-81-5	Einecs: 200-289-5		
-----------------	-------------------	--	--

Minimum Assay: 99.5%  
 Molecular Formula: C<sub>3</sub>H<sub>8</sub>O<sub>3</sub>  
 Molecular Weight: 92.09 g/mol  
 Melting Point: 20 °C  
 Solubility in water (% weight): Soluble in water  
 Flash Point: 160 deg C  
 Boiling Point: 182 deg C  
 Refractive Index : 1.470-1.475 nD20  
 Colour: Clear - Pale Yellow  
 Storage Temperature: 20-24C

Code	Pack
GPS1005-D	500ml
GPS1005-E	1L
GPS1005-F	2.5L
GPS1005-G	5L
GPS1005-K	25L

## Gold Chloride 49.98% ACS


Cas No: 16961-25-4	Einecs: 240-948-4	UN3260	
--------------------	-------------------	--------	--

 Minimum Assay: 49.98%  
 Molecular Formula AuCl<sub>3</sub> HCl . 3H<sub>2</sub>O  
 Molecular Weight 393.83 g/mol  
 Alkali Metals: <0.02% w/v  
 Colour: Yellow/ Orange

Code	Pack
GPC8001-S	1gm
GPC8001-5G	5gm

## Hydrochloric Acid 35.0-36.6% ACS


Cas No: 7647-01-0	Einecs: 31-595-7	UN1789	
-------------------	------------------	--------	--

 Minimum Assay: 35.6-36.6%  
 Molecular Formula HCl  
 Molecular Weight 36.46 g/mol  
 Sulphate (SO<sub>4</sub>): <0.6%  
 Iron (Fe): <10ppm  
 Arsenic (As): <2ppm  
 Lead (Pb): <2ppm  
 Copper (Cu): <2ppm  
 Total organics: <100ppm

Code	Pack
GPC8006-D	500ml
GPC8006-E	1L
GPC8006-3E	3x1L
GPC8006-6E	6x1L
GPS8006-12E	12 x 1L

## Industrial Methylated Spirits 99.5%


Cas No: 64-17-5	Einecs: 200-578-6	UN1170	Flash Point: -57°C
-----------------	-------------------	--------	--------------------

 Minimum Assay: >99.5%  
 Molecular Formula: C<sub>2</sub>H<sub>6</sub>O  
 Molecular Weight: 46.07 g/mol  
 Boiling Point: 78°C  
 Melting Point: -114°C  
 Density at 20°C (g/cm<sup>3</sup>): 0.785  
 Refractive Index: 1.361  
 Water Content: Max 1.43%  
 Acidity as Acetic Acid: Max 0.003%  
 Carbonyls as Acetaldehyde: Max 0.1%

Code	Pack
GPS1000-D	500ml
GPS1000-E	1L
GPS1000-F	2.5L
GPS1000-G	5L

## IsoPentane 96% (GW)

Cas No: 78-78-4	Einecs: 201-142-8	UN1265	
-----------------	-------------------	--------	--

 Minimum Assay: >96%  
 Molecular Formula: C<sub>5</sub>H<sub>12</sub>  
 Molecular Weight: 72.15 g/mol  
 Boiling Point: 30°C  
 Melting Point: -160°C  
 Density at 25°C (g/cm<sup>3</sup>): 0.62  
 Refractive Index: 1.354


Code	Pack
GWN6298-D	500ml
GWN6298-12D	12 x 500ml
GWN6298-E	1L
GWN6298-6E	6 x 1L

ISO15189 compliant products  
*simply* delivering consistency  
 and reliability to Life Sciences

# Chemicals & Reagents

## Isopropyl Alcohol 99.9% ACS


Cas No: 67-63-0	Einecs: 200-61-7	UN1219	Flash Point: 13°C
-----------------	------------------	--------	-------------------

 Minimum Assay: >99.9%  
 Molecular Formula: C<sub>3</sub>H<sub>8</sub>O  
 Molecular Weight: 60.1 g/mol  
 Melting Point: -89.5 °C  
 Boiling Point: 82.4 °C  
 Water: <0.2%  
 Colour: <10 Hazen

Code	Pack
GPS1007-E	1L
GPS1007-12E	12x1L
GPS1007-F	2.5L
GPS1007-G	5L

## Methanol 99.85% ACS


Cas No: 67-56-1	Einecs: 200-69-6	UN1230	Flash Point: 12°C
-----------------	------------------	--------	-------------------

 Minimum Assay: 99.85%  
 Molecular Formula: CH<sub>3</sub>OH  
 Molecular Weight: 32.04 g/mol  
 Flash Point: 11 °C  
 Boiling Point: 64.96 °C  
 Melting Point: -97.8 °C  
 Water: <0.1%

Code	Pack
GPS1004-E	1L
GPS1004-12E	12x1L
GPS1004-F	2.5L
GPS1004-6F	6x2.5L

## Nitric Acid 69%


Cas No: 67-63-0	Einecs: 200-61-7	UN1219	Flash Point: 13°C
-----------------	------------------	--------	-------------------

 Minimum Assay: >69%  
 Molecular Formula: HNO<sub>3</sub>  
 Density: 1.401-1.417  
 Nitrous Acid: <200ppm  
 Sulphuric Acid: <100ppm  
 Residue On Ignition: <50ppm  
 Iron (Fe): <10ppm

Code	Pack
GPC9289-D	500ml
GPC9289-E	1L
GPC9289-6E	6x1L
GPC9289-12E	12x1L

## Paraformaldehyde 97%


Cas No: 30525-89-4	Einecs: 203-632-7	UN2213	
--------------------	-------------------	--------	--

 Minimum Assay: >97%  
 Molecular Formula: (CH<sub>2</sub>O)<sub>n</sub>  
 Molecular Weight: 323.83 g/mol  
 Melting Point: 120-170°C

Code	Pack
GPC9407-2X	250gm
GPC9407-5X	500gm
GPC9407-Y	1Kg

## Phenol Detached Crystals 99% ACS


Cas No: 108-95-2	Einecs: 203-632-7	UN2821	
------------------	-------------------	--------	--

 Minimum Assay: >99%  
 Molecular Formula: C<sub>6</sub>H<sub>6</sub>O  
 Molecular Weight: 94.11 g/mol  
 Solubility in Water (1 in 12): Clear @ 20 C  
 Melting Point: 43 °C  
 Boiling Point: 182 °C  
 Storage Temperature: 20-24C  
 Chlorine (Cl): <1ppm  
 Sulphur (S): <0.5ppm  
 Iron (Fe): <0.1ppm

Code	Pack
GPC8008-2W	50gm
GPC8008-X	100gm
GPC8008-2X	250gm
GPC8008-5X	500gm

## Phenol Solution 80%


Cas No: 108-95-2	Einecs: 203-632-7	UN2821	
------------------	-------------------	--------	--

 Minimum Assay: >80%  
 Chemical Formula: C<sub>6</sub>H<sub>6</sub>O  
 Molecular Weight: 94.11  
 Water: <20%

Code	Pack
GPC3354-D	500ml
GPC3354-E	1L

## Picric Acid 98%

Cas No: 88-89-1	Einecs: 88-89-1	UN1344	Flash Point: 150°C
-----------------	-----------------	--------	--------------------

 Minimum Assay: >98%  
**Moistened with Water**  
 Molecular Formula: (O<sub>2</sub>N)<sub>3</sub>C<sub>6</sub>H<sub>2</sub>OH  
 Molecular Weight: 229.10  
 Explosive Limits: <0.01  
 Melting Point: 122-123 °C

Code	Pack
GPC8021-2W	50gm
GPC8021-X	100gm
GPC8021-5X	500gm

ISO15189 compliant products

*simply* delivering consistency  
 and reliability to Life Sciences

## Potassium dihydrogen Phosphate 99-102.00%

Cas No: 7778-77-0	Einecs: 231-913-4		
-------------------	-------------------	--	--

Minimum Assay: >100.2%  
 Molecular Formula: KH<sub>2</sub>PO<sub>4</sub>  
 Molecular Weight: 136.09 g/mol  
 Melting Point: 252.6 °C  
 pH (1% Solution): 4.2 - 4.8  
 Lead (Pb): <1ppm  
 Arsenic (As): <1ppm  
 Cadmium (Cd): <1ppm  
 Mercury (Hg): <1ppm  
 Fluoride (F): <10ppm

Code	Pack
GPC8093-X	100gm
GPC8093-2X	250gm
GPC8093-5X	500gm
GPC8093-Y	1Kg
GPC8093-5Y	5Kg

## Di Potassium Hydrogen Phosphate 98% ACS

Cas No: 7758-11-4	Einecs: 231-834-5		
-------------------	-------------------	--	--

Minimum Assay: >98%  
 Molecular Formula: K<sub>2</sub>HPO<sub>4</sub>  
 Molecular Weight: 174.18 g/mol  
 Melting Point: 180 °C  
 P<sub>2</sub>O<sub>5</sub>: 40.3 - 41.5  
 pH (1% Solution): 9.0 - 9.4  
 Lead (Pb): <1ppm  
 Arsenic (As): <1ppm  
 Cadmium (Cd): <1ppm  
 Mercury (Hg): <1ppm  
 Fluoride (F): <10ppm

Code	Pack
GPC8094-X	100gm
GPC8094-2X	250gm
GPC8094-5X	500gm
GPC8094-Y	1Kg
GPC8094-5Y	5Kg

# Chemicals & Reagents

## Potassium Hydroxide Flake 90%

Cas No: 1310-58-3	Einecs: 215-181-3	UN1813
-------------------	-------------------	--------



Minimum Assay: >90%  
Molecular Formula: KHO  
Molecular Weight: 56.11  
Melting Point: 360°C Boiling Point: 1320-1324°C  
Potassium Carbonate (K<sub>2</sub>CO<sub>3</sub>): <0.5%  
Potassium Chloride (KCl): <0.015%  
Iron (Fe): <3ppm  
Sodium Hydroxide (NaOH): <5ppm  
Sulphated Ash: <5ppm



Bulk Density: 0.8-1.2 g/m<sup>3</sup>  
Lead (Pb): <0.1ppm  
Zinc (Zn): <0.2ppm  
Arsenic (As): <10ppm

Code	Pack
GPC8060-5X	500gm
GPC8060-Y	1Kg
GPC8060-2.5Y	2.5Kg
GPC8060-5Y	5Kg

## Potassium Hydroxide Pellets 85%

Cas No: 1310-58-3	Einecs: 215-181-3	UN1813
-------------------	-------------------	--------



Minimum Assay: >99%  
Molecular Formula: KOH  
Molecular Weight: 56.11 g/mol  
Melting Point: 361 °C



Code	Pack
GPC8025-2X	250gm
GPC8025-5X	500gm
GPC8025-Y	1Kg
GPC8025-5Y	5Kg

## Potassium Sodium Tartrate Tetrahydrate 98%

Cas No: 6381-59-5	Einecs: 206-156-8
-------------------	-------------------

Minimum Assay: >98%  
Molecular Formula: C<sub>4</sub>H<sub>4</sub>KNaO<sub>6</sub>·4H<sub>2</sub>O  
Molecular Weight: 282.23  
Solubility in water (% weight): Soluble in water  
Chloride (Cl): <0.005%  
Sulphate (SO<sub>4</sub>): <0.05%

Acidity or Alkalinity: Max 1 ml N%

Code	Pack
GPC9920-2X	250gm
GPC9920-5X	500gm
GPC9920-Y	1Kg
GPC9920-5Y	5Kg

## Silver Nitrate 99.9% ACS

Cas No: 7761-88-8	Einecs: 231-853-9	UN1493
-------------------	-------------------	--------

Minimum Assay: >99.9%  
Molecular Formula: AgNO<sub>3</sub>  
Molecular Weight: 169.87 g/mol  
Melting Point: 212 °C  
Chloride (Cl): <1ppm  
Sulphate (SO<sub>4</sub>): <5ppm

Copper (Cu): <0.1ppm  
Iron (Fe): <0.2ppm  
Lead (Pb): <1ppm

Code	Pack
GPC8109-W	25gn
GPC8109-2W	50gm
GPC8109-X	100gm
GPC8109-2X	250gm

## Sodium Azide 99%

Cas No: 26628-22-8	Einecs: 247-852-1
--------------------	-------------------



Minimum Assay: >99%  
Molecular Formula: N<sub>3</sub>Na  
Molecular Weight: 65.01 g/mol  
Melting Point: 275 °C



Code	Pack
GPC8029-X	100gm
GPC8029-2X	250gm
GPC8029-5X	500gm
GPC8029-Y	1Kg

## Sodium Chloride 99.9% BP, ACS, Ph Eur

Cas No: 7647-14-5	Einecs: 231-598-3
-------------------	-------------------

Minimum Assay: >99.9%  
Molecular Formula: NaCl  
Molecular Weight: 58.44 g/mol  
Melting Point: 801 °C Iron (Fe): <0.1ppm

Code	Pack
GPC8030-5X	500gm
GPC8030-Y	1Kg
GPC8030-5Y	5Kg
GPC8030-25Y	25Kg

## Sodium dihydrogen Citrate 99% Anhydrous

Cas No: 18996-35-5	Einecs: 242-734-6
--------------------	-------------------

Minimum Assay % 99.6%  
Molecular Formula: C<sub>6</sub>H<sub>7</sub>NaO<sub>7</sub>  
Molecular Weight: 214.11  
pH (1%): 3.5 - 3.8  
Melting Point: 211-212 deg C  
Heavy metals (Pb): <5 mg/Kg  
Lead (Pb): <1 mg/Kg  
Mercury (Hg): <1 mg/Kg  
Arsenic (As): <1 mg/Kg  
Iron (Fe): <20.0 mg/Kg  
Loss on Drying: <0.4mg/Kg  
Chloride (Cl): <50 mg/Kg  
Sulphate (SO<sub>4</sub>): <150mg/Kg

Code	Pack
GPC8989-X	100gm
GPC8989-5X	500gm
GPC8989-Y	1Kg
GPC8989-5Y	5Kg

## di-Sodium Hydrogen Phosphate Anhydrous

Cas No: 7558-79-4	Einecs: 231-448-7
-------------------	-------------------

Minimum Assay: >98.5%  
Molecular Formula: H<sub>2</sub>Na<sub>2</sub>O<sub>4</sub>P  
Molecular Weight: 141.96  
Appearance Form: White Crystalline powder  
pH: 8.9 - 9.2 at 50 g/l at 25 °C  
PO<sub>2</sub> Content: 49.7%  
Vapour density: 4.90 - (Air = 1.0)  
Relative density: 1.520 g/cm<sup>3</sup>  
Water solubility: soluble  
Relative vapour density 4.90 - (Air = 1.0)  
Arsenic (As): <1ppm  
Fluoride (F): <10ppm  
Lead (Pb): <1ppm  
Cadmium (Cd): <1ppm  
Mercury (Hg): <0.5ppm  
Insoluble Matter: <0.02%  
Loss on Drying: <0.1%

Code	Pack
GPC8034-2X	250gm
GPC8034-5X	500gm
GPC8034-Y	1Kg
GPC8034-5Y	5Kg

## Sodium di-Hydrogen Phosphate Anhydrous 99% ACS

Cas No: 7558-80-7	Einecs: 231-449-2
-------------------	-------------------

Minimum Assay: 98.0-103.0%  
Molecular Formula: H<sub>2</sub>NaO<sub>4</sub>P  
Molecular Weight: 119.98 g/mol  
P<sub>2</sub>O<sub>5</sub> (%m/m): 58.0-60.0  
pH (1% Solution): 4.1-4.7  
Water Insoluble Matter: <0.2%  
Fluoride (F): <10ppm  
Arsenic (As): <3ppm  
Lead (Pb): <2ppm  
Cadmium (Cd): <1ppm  
Mercury (Hg): <1ppm

Code	Pack
GPC8032-2X	250gm
GPC8032-5X	500gm
GPC8032-Y	1Kg
GPC8032-5Y	5Kg

ISO15189 compliant products  
*simply* delivering consistency  
and reliability to Life Sciences

# Chemicals & Reagents

## Sodium Formate 99.1%

Cas No: 141-53-7	Einecs: 205-488-0
------------------	-------------------

Minimum Assay: <99.1%

Molecular Formula: HCOONa  
Molecular Weight: 68.01 g/mol

Melting Point: 259-262 °C  
Density (g/cm<sup>3</sup>): 1.92  
Chloride (Cl): 0.0004%  
Sulphate (SO<sub>4</sub>): 0.0008%  
Heavy Metals (as Pb): 0.0005%  
Iron (Fe): <0.0003%  
Calcium (Ca): <0.0005%  
Loss on Drying (150 °C): 0.13%  
pH (5%, in water): 7.90

Code	Pack
GPC9914-2X	250gm
GPC9914-5X	500gm
GPC9914-Y	1Kg
GPC9914-5Y	5Kg

## Sodium Hydroxide Pearl 99%

Cas No: 1310-73-2	Einecs: 215-185-5	UN1823
-------------------	-------------------	--------



Total Alkalinity (NaOH/Kg): 99.0%  
Molecular Formula: NaOH  
Molecular Weight: 40.0 g/mol  
Melting Point: 318.4 °C  
Sodium Carbonate (Na<sub>2</sub>CO<sub>3</sub>): <4g  
Sodium Chloride (Cl): <0.2%

Code	Pack
GPC8035-2X	250gm
GPC8035-5X	500gm
GPC8035-Y	1Kg
GPC8035-3Y	3x1Kg
GPC8035-6Y	6x1Kg

## Sodium Hydroxide Pellets 99.9% ACS

Cas No: 1310-73-2	Einecs: 215-185-5	UN1823
-------------------	-------------------	--------



Minimum Assay: 97.0-100.5%  
Molecular Formula: NaOH  
Molecular Weight: 40.0 g/mol  
Melting Point: 318.4 °C  
Appearance in 10% Solution:  
Clear and Colourless  
Chloride (Cl): <200ppm  
Sulphate (SO<sub>4</sub>): <50ppm  
Iron (Fe): <10ppm  
Heavy Metals (as Pb): <20ppm  
Arsenic (As): <3ppm  
Lead (Pb): <0.5ppm  
Mercury (Hg): <1ppm

Code	Pack
GPC8036-2X	250gm
GPC8036-5X	500gm
GPC8036-Y	1Kg
GPC8036-3Y	3x1Kg
GPC8036-6Y	6x1Kg

## Sodium Hypochlorite 14%

Cas No: 7681-52-9	Einecs: 231-668-3	UN1791
-------------------	-------------------	--------



Available Chlorine: >14%  
Molecular Formula: NaClO  
Molecular Weight: 74.44 g/mol  
Sodium Hydroxide (NaOH): 0.2-1%  
Clarity % Transmission: 79  
Copper (Cu): <0.2ppm  
Nitrogen (Ni): <0.1ppm  
Sodium Carbonate: <1.5%  
Iron (Fe): <2ppm

Cadmium (Cd): <0.1%

Code	Pack
GPC9939-D	500ml
GPC9939-E	1L
GPC9939-F	2.5L
GPC9939-G	5L

## Sodium Tartrate Dihydrate 99.5%

Cas No: 6106-24-7	Einecs: 212-773-3
-------------------	-------------------

Minimum Assay: >99.5%  
Molecular Formula: C<sub>4</sub>H<sub>4</sub>Na<sub>2</sub>O<sub>6</sub>·2H<sub>2</sub>O  
Molecular weight: 230.08  
Melting Point: 150°C  
Heavy Metals (as Pb): <0.002%  
Arsenic (As): <0.0003%  
Phosphates (PO<sub>4</sub>): <0.01%  
Sulphates (SO<sub>4</sub>): <0.01%  
Loss on Drying: 15.2%

Code	Pack
GPC9921-X	100gm
GPC9921-2X	250gm
GPC9921-5X	500gm
GPC9921-Y	1Kg

## Sulphuric Acid 25%

Cas No: 7664-93-9	Einecs: 231-639-5	UN2796
-------------------	-------------------	--------



Minimum Assay: 25%  
Molecular Formula: H<sub>2</sub>SO<sub>4</sub>  
Molecular Weight: 98.08

Code	Pack
GPS1040-D	500ml
GPS1040-E	1L

## Sulphuric Acid 96%

Cas No: 7664-93-9	Einecs: 231-639-5	UN1830
-------------------	-------------------	--------



Minimum Assay: 95.5-97%  
Molecular Formula: H<sub>2</sub>SO<sub>4</sub>  
Molecular Weight: 98.07  
g/mol Residue on Ignition:  
100mg/Kg Nitrogen Oxides  
(as N<sub>2</sub>): 25mg/Kg  
Chloride (Cl): 5mg/Kg

Code	Pack
GPC9000-D	500ml
GPC9000-E	1L
GPC9000-6E	6 x 1L
GPC9000-12E	12 x 1L
GPC9000-24E	24 x 1L

## Water Purified

Cas No: 7732-18-5	Einecs: 231-791-2
-------------------	-------------------

Minimum Assay: >99.99%  
Molecular Formula: H<sub>2</sub>O  
Molecular Weight: 18.02 g/mol  
Boiling Point: 100 °C  
Melting Point: 0 °C  
uS: <0.5  
ppm: <1ppm

Code	Pack
GPC9600-D	500ml
GPC9600-E	1L
GPC9600-F	2.5L
GPC9600-G	5L
GPC9600-K	25L

ISO15189 compliant products  
*simply* delivering consistency  
and reliability to Life Sciences

## Xylene 98-99% (Mixture of Isomers)

Cas No: 1330-20-7	Einecs: 215-535-7	UN1307	Flash Point: 25°C
-------------------	-------------------	--------	-------------------



Minimum Assay: 98-99%  
Molecular Formula: C<sub>8</sub>H<sub>10</sub>  
Molecular Weight: 106.17 g/mol  
Flash Point: 25 °C  
Boiling Point: 136-143 °C



Code	Pack
GPS1001-D	500ml
GPS1001-E	1L
GPS1001-12E	12 x 1L
GPS1001-F	2.5L
GPS1001-G	5L
GPS1001-4G	4 x 5L





# Index

Acetic Acid 0.5% Solution	29	Erythrosin 0.1% Acidified Solution	38
Acetic Acid 25% Aqueous Solution	19	Ferric Ammonium Sulphate 2.5% Solution (Iron Alum)	27
Acetic Acid 3% Solution	16	Ferric Chloride 10% Solution	25
Acid Alcohol 0.1%	10	Ferric Chloride 29% Aqueous Solution	19
Acid Alcohol 0.25%	10	Fields Stain - Solution A	26
Acid Alcohol 0.3%	10	Fields Stain - Solution B	26
Acid Alcohol 0.5%	10	Fields Stain Kit	26
Acid Alcohol 1%	10	Formaldehyde 10% Solution Unbuffered	28
Acid Alcohol 3%	10	Giemsa Stain RR88	44
AFB Stain Kit (Light Green Counterstain)	12	Gold Chloride 0.1% Solution	35
AFB Stain Kit (Methylene Blue Counterstain)	13	Gold Chloride 0.2% Aqueous Solution	28
Alcian Blue 1% in 3% Acetic Acid (pH 2.5)	14	Gomori Reticulin Stain Kit	27-28
Alcian Blue 8GX 1% in 0.1N HCL	15	Gomori Trichrome Stain	29
Alcian Blue PAS Stain Kit	14	Gomori Trichrome Stain Kit	29
Alcian Blue Stain Kit pH 1.0	15	Gram Differentiator	30
Alcian Blue Stain Kit pH 2.5	16	Gram Stain Kit (Gram Fuchsin Counterstain)	30
Ammonia Solution 33% Solution	27	Gram Stain Kit (Hucker & Conn)	31
Aniline Blue (1% Aqueous)	40	Gram Stain Kit (Neutral Red Counterstain)	32
Auramine Phenol Differentiator	64	Gram Stain Kit (Safranin Counterstain)	33
Auramine Phenol Lempert Solution	64	Gram Stain Kit (Twort Counterstain)	34
Auramine Rhodamine Phenol	65	Grams Iodine	30
Bouins Fixative	29	Grocott Stain Kit	35-36
Brilliant Crystal Scarlet	40	Haemalum Mayer	6
Buffer Solution (Sudan Black)	63	Haematoxylin Weigerts A	29
Buffer Tablets pH 6.8 (Each Tablet make 1L of buffer)	58	Haematoxylin & Eosin Stain Kit (H&E)	37
Carazzi Haematoxylin (Double Strength)	7	Haematoxylin 5% Alcoholic	25
Carbol Fuchsin (Gram)	30	Haematoxylin Delafield	7
Carbol Fuchsin (ZN)	71	Haematoxylin Ehrlich	7
Carbol Fuchsin Kinyoun	12	Haematoxylin Gill (Formula I)	6
Chromic Acid Solution 5% Solution	35	Haematoxylin Gill (Formula II)	6
Cold Kinyoun Stain Kit (Malachite Green Counterstain)	17	Haematoxylin Gill (Formula III)	6
Cold Kinyoun Stain Kit (Methylene Blue Counterstain)	18	Haematoxylin Harris	6
Coles Haematoxylin	7	Haematoxylin Harris Acidified	6
Colloidal Iron Stain Kit (Muller)	19	Haematoxylin Weigerts B	29
Colloidal Perls Reagent A (5% Hydrochloric Acid)	19	Hexamine (Methanamine) 3% Solution	35
Colloidal Perls Reagent B (5% Potassium Ferrocyanide)	19	Iodine 2% Alcoholic	70
Congo Red in 50% Ethanol	20	Isopropyl Alcohol 70%	47
Congo Red in 80% Ethanol Saturated	21	Kleihauer Buffer Solution 1	38
Congo Red Stain Kit (Highman)	20	Kleihauer Buffer Solution 2	38
Congo Red Stain Kit (Putchler & Sweat)	21	Kleihauer Stain Kit	38
Cresyl Violet 0.5% Aqueous Solution	39	Light Green (0.2% in 0.2% Acetic Acid)	36
Cresyl Violet Differentiator (IMS 99%)	39	Light Green 0.5% Aqueous	12
Cryptosporidium Fixative	22	Light Green Masson (2% in 2.5% Acetic Acid)	42
Cryptosporidium Stain Kit	22	Lipase from Porcine Pancreas	23
Crystal Violet (0.5% Aqueous)	30	Lithium Carbonate Solution 0.05%	39
Crystal Violet Oxalate (Hucker & Conn)	31	Lugols Iodine Solution	25
Denatured Ethanol 70%	39	Luxol Fast Blue in Acidified Methanol	39
Denatured Ethanol 80%	38	Luxol Fast Blue Stain Kit	39
DPAS Stain Kit	23	Malachite Green 0.5% Aqueous	17
Elastic Van Gieson Stain Kit (Miller) (EVG)	24	Martius Scarlet Blue Stain Kit (MSB)	40
Elastic Van Gieson Stain Kit (Verhoeffs) (EVG)	25	Martius Yellow Sat. Alcoholic with 2% Phosphotungstic Acid	40
Eosin Y (0.5% Alcoholic)	8	Masson Fontana Stain Kit	41
Eosin Y (0.5% Aqueous)	8	Masson Trichrome (Light Green) Stain Kit	42
Eosin Y (1% Alcoholic)	8	Masson Trichrome (Methyl Blue) Stain Kit	43
Eosin Y (1% Aqueous)	8	May Grünwald Giemsa Stain Kit	44
Eosin Y (2% Aqueous)	8	May Grunwald Stain	44
Eosin Y (5% Aqueous)	8	Methyl Blue 2% in 2.5% Acetic Acid	43
Eosin Y (Putts)	9	Methylene Blue (AFB)	13
Eosin Y with Phloxine	9	Millers Elastic Stain	24

# Index

Mucicarmine (Southgate)	45	Sudan Black Stain in 70% Ethanol	63
Mucicarmine Southgate Stain Kit	45	Sudan Black Stain Kit (Haematology Version)	63
Neisser Stain A (Methylene Blue Solution)	46	Sulphuric Acid 3% Solution	24
Neisser Stain B (Crystal Violet Solution)	46	TB Differentiator	12
Neisser Stain C (Iodine Solution)	46	TB Fluorescent Stain Kit I (Auramine Phenol Lempert)	64
Neisser Stain D (Chrysoidine Solution)	46	TB Fluorescent Stain Kit II	65
Neisser Stain Kit	46	Toluidine Blue 1% in 70% Alcohol	66
Neutral Red 0.1% Aqueous	16	Toluidine Blue Stain Kit	66
Neutral Red 0.5% Aqueous Solution	19	Twort Stain Solution A	34
Oil Red O 1% Solution in Isopropanol	47	Twort Stain Solution B	34
Oil Red O Stain Kit	47	Van Gieson Extra Stain	24
Orcein Elastic Stain Kit	48	Von Kossa Stain Kit	67
Orcein Shikata Stain Kit (for HbAg in tissue)	49	Von Kossa Stain Kit (Strong)	68
Orcein Solution (1% Orcein in 1% Acid Alcohol)	48	Weigerts Haematoxylin/Van Gieson Stain Kit	69
Oxalic Acid 1% Solution	24	Wheatley's Differentiator	70
Papanicolaou Stain Kit	50	Wheatley's Trichrome Stain	70
Papanicolau EA50	50	Wheatleys Trichrome Stain Kit	70
Papanicolau OG6	50	ZN Stain Kit (Malachite Green)	71
PAS Stain Kit (modified McManus 1946)	51	ZN Stain Kit (Methylene Blue)	72
PAS Stain Kit for fungal cell walls (modified McManus 1946)	52		
Periodic Acid (1% Aqueous)	14		
Perl Stain Kit (Haematology Version)	54		
Perls Stain (Solution A)	53		
Perls Stain (Solution B)	53		
Perls Stain Kit	53		
Perls Van Gieson Stain Kit	55		
Phosphotungstic Acid 1% Solution	40		
Picric Acid 2.1% Saturated Aqueous Solution	56		
Picro Mallory Solution A	56		
Picro Mallory Solution B	56		
Picro Mallory Trichrome Stain Kit	56		
Ponceau Fuchsin (Masson)	42		
Potassium Hydroxide 0.2% in 80% Ethanol	20		
Potassium Hydroxide 10% Solution	27		
Potassium Metabisulphite 2% Solution	27		
Potassium Permanganate (0.5% Aqueous)	24		
Rapi Diff Solution A	57		
Rapi Diff Solution B	57		
Rapi Diff Solution C	57		
Rapi-Diff II Stain Kit	57		
Rapi-Diff II Stain Kit Extra	58		
Reticulin Stain Kit (with Gold Chloride)	59-60		
Reticulin Stain Kit (without Gold Chloride)	61-62		
Safranin 0.5% Aqueous	31		
Saturated Sodium Chloride Alcoholic Solution	21		
Schiff Reagents (Feulgen)	14		
Scotts Tap Water Plus (Ready to Use)	11		
Scotts Tap Water Substitute (10 x Concentrate)	11		
Scotts Tap Water Substitute Ready to Use	11		
Silver Nitrate 10% Solution	27		
Silver Nitrate 5% Solution	35		
Sodium Chloride 0.9% Aqueous	66		
Sodium Hydroxide 1% Aqueous Solution	21		
Sodium Hydroxide Solution 3%	62		
Sodium Metabisulphite 1% Solution	35		
Sodium Tetraborate 5% Solution	35		
Sodium Thiosulphate 2% Solution	28		
Sodium Thiosulphate 5% Solution	25		
Sorensens Buffer 200 x Concentrate pH 6.8 25ml to make 5L	26		



**ISO15189** compliant products  
*simply* delivering consistency  
and reliability to **Life Sciences**

Unit 2B  
East Tame Business Park  
Rexcine Way  
Hyde  
United Kingdom  
SK14 4GX

---

**T:** +44 (0) 161 366 5123  
**E:** [sales@atomscientific.com](mailto:sales@atomscientific.com)  
**W:** [www.atomscientific.com](http://www.atomscientific.com)