

Product catalog Industrial applications

SLEE – Your partner in innovation and high precision



Microtomes

Cryostats

Application areas
and examples

DESIGN AND MANUFACTURING
MADE IN GERMANY





55µ CUT R 2µ
0000h

Control panel buttons:

- CUT
- Warning symbol
- ↑
- ↓
- TRIM
- SLOW
- +
-

Rotary microtome CUT 5062 with industrial equipment for automotive application

SLEE supplies a broad product range for thin-cutting technology for industrial quality control and material research.

More than 50 years of experience in development, production and sales of microtomes and cryostats is a guarantee of high product quality and the continuous success of SLEE.

The combination of competence and flexibility allows us to fulfill individual requests and customer solutions.

SLEE products are designed and developed as well as manufactured in the headquarter in Mainz.

Products for Research and Industry
"Made in Germany"

www.slee.de

Content	Page
Microtomes	4
CUT 4062	
CUT 5062	
CUT 6062	
Accessories	
Quickfreezing unit MTR	
Cryostats	14
MEV	
MNT	
Application areas and examples	20

Rotary Microtomes

All SLEE microtomes are produced at the company in Mainz, Germany. The highly precise, modularly built rotary microtomes range from a manual unit, type CUT 4062, via the semi-automatic type CUT 5062 to the fully-automatic CUT 6062.

All microtomes are equipped with maintenance-free caged roller bearing guide ways and micrometer feed mechanism to provide highest stability and precision.

A huge variety of devices and accessories provide you with the equipment for all your application needs.



Microtomes

Cryostats

Application areas
and examples

Overview



CUT 4062	CUT 5062	CUT 6062
Art. No. 10065000	Art. No. 10070001	Art. No. 10080001
Manual precision microtome	Semi-automatic precision microtome	Fully automatic precision microtome
Exchangeable standard knife or disposable blade holder	Exchangeable standard knife or disposable blade holder	Exchangeable standard knife or disposable blade holder
Trimming function in 4 steps	Motor trimming function, 0 – 750 µm	Motor trimming function, 0 – 750 µm
Ergonomically located coarse feed wheel	Motor coarse advance in 2 speeds	Motorized sectioning (section window / variably adjustable cutting speeds)
Object orientation	Object orientation	Object orientation
Acoustic signal at end positions	2 Specimen feed memory positions	2 Specimen feed memory positions
Automatic retraction	Automatic motor retraction	Automatic motor retraction
Options		
Section counter, standard object clamp (up to 50 x 50 mm), foil clamp, prism set	Section counter, standard object clamp (up to 50 x 50 mm), foil clamp, prism set	Section counter, standard object clamp (up to 50 x 50 mm), foil clamp, prism set
Specifications		
610 D x 480 W x 350 H	610 D x 480 W x 350 H	610 D x 480 W x 350 H
33 kg	33 kg	34 kg
Cutting thickness 0.5 – 60 µm	Cutting thickness 0.5 – 100 µm	Cutting thickness 0.5 – 100 µm
Horizontal advance 28 mm	Horizontal advance 28 mm	Horizontal advance 28 mm
Vertical stroke 60 mm	Vertical stroke 60 mm	Vertical stroke 60 mm
		Cutting speed variable 3–450 mm/s
Specimen orientation x/y axis: 8° z axis: 360°	Specimen orientation x/y axis: 8° z axis: 360°	Specimen orientation x/y axis: 8° z axis: 360°



CUT 4062

Manual precision microtome

The new SLEE CUT 4062 is a manual rotary microtome designed for paraffin sections and research-, plastic- and industrial applications.

- High precision specimen feed
- Smoothly running hand wheel
- Hand wheel lock in each position
- Trimming function in 4 steps
- Specimen retraction upon backstroke
- Acoustic signal for end position of specimen movement
- Vibration free microtome base plate
- Ergonomically located coarse feed wheel
- Spacious, integrated section waste tray
- Wide range of accessories

CUT 4062

Art. No. #10065000



CUT 5062

Semi-automatic precision microtome

The SLEE CUT 5062 is a semi-automated rotary microtome designed for paraffin sections and research-, plastic- and industrial applications. The modular design allows custom-made assemblies from a huge range of accessories.

- Motorized trimming up to 750 μm , programmable
- Motorized advance (2 speeds) / return of specimen
- 2 Specimen feed memory positions
- Specimen size up to 50 x 50 mm with standard object clamp
- Intuitive control panel
- Variable retraction
- Section counter (Stroke / Distance)
- Spacious, integrated section waste tray
- Wide range of accessories

CUT 5062 100 – 240 V, 50/60 Hz

Art. No. #10070001



CUT 6062

Fully automatic precision microtome

Special for composite and embedding materials

The SLEE CUT 6062 is a fully automated rotary microtome designed for paraffin sections and research-, plastic- and industrial applications. The modular design allows custom-made assemblies from a huge range of accessories.

- Motorized trimming up to 750 μm , programmable
- Motorized advance (2 speeds) / return of specimen
- 2 Specimen feed memory positions
- High efficient motorized sectioning (section window / variably adjustable cutting speeds)
- Variable retraction
- Intuitive control panel
- Section counter (Stroke / Distance)
- Specimen size up to 50 x 50 mm with standard object clamp
- Spacious, integrated section waste tray
- Wide range of accessories

CUT 6062 100 – 240 V, 50/60 Hz

Art. No. #10080001

Specifications

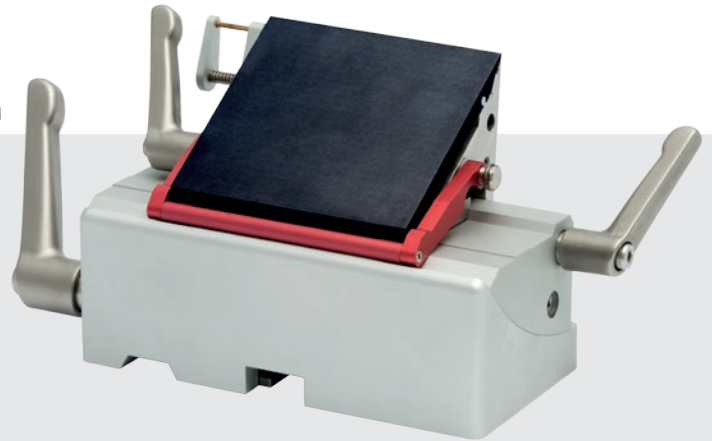
Section thickness setting range	CUT 4062 0.5 – 60 µm CUT 5062/CUT 6062 0.5 – 100 µm
Section thickness selection	CUT 4062 0.5 – 2 µm in 0.5-µm steps 2 – 10 µm in 1-µm steps 10 – 60 µm in 2-µm steps CUT 5062/CUT 6062 0.5 – 2 µm in 0.5-µm steps 2 – 20 µm in 1-µm steps 20 – 50 µm in 2-µm steps 50 – 100 µm in 5-µm steps
Trimming thickness	CUT 4062 10 µm, 20 µm, 30 µm, 40 µm CUT 5062/CUT6062 0.5 – 750 µm
Specimen feed	CUT 4062 28 mm (via coarse feed wheel) CUT 5062/CUT 6062 28 mm (step motor) 75 / 150 / 300 / 600 & 3000 µm/s
Specimen feed memory	CUT 5062/CUT 6062 2 positions programmable
Vertical specimen stroke	60 mm
Sectioning speed	CUT 6062 3 – 450 mm/s, selectable via slider
Section window	CUT 6062 4 sizes selectable
Specimen retraction	CUT 4062 automatic On return stroke CUT 5062/CUT 6062 0 – 200 µm, selectable
Specimen orientation, horizontal	8°
Specimen orientation, vertical	8°
Specimen orientation, z-axis	360°
Section counter	CUT 4062 Strokes (optional) CUT 5062/CUT 6062 Strokes / Distance
Dimensions (width x depth x height)	480 x 610 x 350 mm incl. handwheel and waste tray
Weight without accessories	CUT 4062/CUT5062 33 kg CUT 6062 34 kg

Standard components

	CUT 4062	CUT 5062	CUT 6062
Basic instrument	■	■	■
Object orientation	■	■	■
Standard object clamp with orientation	■	■	■
3-component-disposable-blade-holder (low and high profile blades) or standard knife holder	■	■	■
Waste tray	■	■	■
Disposable blade (low profile; 50pcs.)	■	■	■
Foot switch for motor drive			■
Operation Manual	■	■	■
Dust cover	■	■	■

Accessories

External control panel CUT 5062	#10090050
External control panel CUT 6062	#10090051
Magnifier with illumination	#10090060
3-component disposable blade holder (low and high profile blades)	#10090040
3-component disposable blade holder (tungsten carbide blades)	#10090041
Knife/blade holder basis	#10090011
Standard Knife holder	#10090008
Object orientation	#10090003
Foil clamp	#10090025
Section counter for CUT 4062 (installed)	#10090020
Dissection needle	#30030095
Prism (Set)	#10090017
Specimen holder for round specimens, diam: 6 mm	#10090046
Specimen holder for round specimens, diam: 15 mm	#10090047
Specimen holder for round specimens, diam: 19 mm	#10090048
Specimen holder for round specimens, diam: 25 mm	#10090049
Disposable blade (low profile; 50 pcs)	#28407000
Disposable blade (high profile; 50 pcs)	#28408000
Tungsten carbide blades (1 pcs.)	#28406000
Microtome knife, Profile: C or D, Length: 10 to 20 cm	



CUT

External control panel

- **Intuitive Use** of panel due to identical button design and layout
- **Safe Workflow** allows control of microtome functions at distance from blade and moving parts
- **Ergonomic Design** ensures fatigue free working
- Free Placement for **right and left handed use** of fully motorized microtome versions

3-component- disposable-blade-holder (tungsten carbide blades)

- **High Precision** lateral adjustment of blade ensures that the entire width of the blade edge can be used
- **Extra Safety** finger protection guard engaged throughout processing (exchange of blade, lateral displacement, trimming, cutting)
- **Multiple Functionality** allows use of low and high profile disposable blades with the same holder
- **Easy Operation** for blade changing by special release mechanics and cutting angle setting by separate middlepiece
- **Durable Designed** blade clamping system
- **Hygienic Levers** made of high-grade steel

External control panel CUT 5062

Art. No. #10090050

External control panel CUT 6062

Art. No. #10090051

3-component-disposable-blade-holder
(tungsten carbide blades)

Art. No. #10090041



CUT 6062 with magnifier



Magnifier with Illumination for ergonomic and safety workflow

When miniature samples need to be precisely processed, attention to detail is vital. The illuminated magnifier directly mounted to the microtome basis is the perfect accessory to meet these requirements.

- Rotatable and adjustable through metal flexible tube
- Lens (Dimensions Ø 72 mm lens; diopters: 6)
- Light source: 63x light-emitting diode (LED), neutral white, dimmer
- Electrical parameters: 100 – 240 V; 50/60 Hz



Magnifier with illumination

Art. No. #10090060

MTR

Bench top quickfreezing unit connecting for CUT series

The fast cooling unit consists of a compressor cooling system with a flexible tube and a cooling block which can be adapted onto a standard object clamp of different kinds of microtomes.

- Extremely silent due to special valves
- Self optimizing controller for temperature accuracy
- Manual defrost
- High cooling capacity to -45°C (at 20°C room temperature)

Specifications

Dimensions (width x depth x height)	410 x 485 x 310 mm
Weight	28 kg
Cooling capacity	-45 °C

MTR 230V, 50/60 Hz

Art. No. #10110000

MTR 115V, 50/60 Hz

Art. No. #11000002

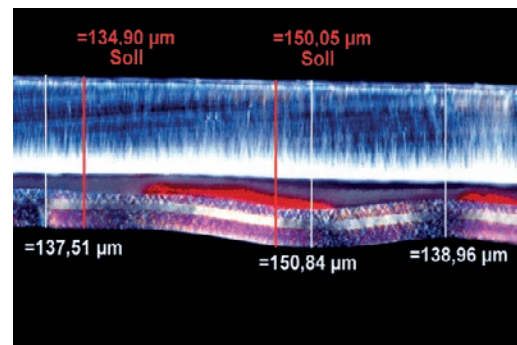
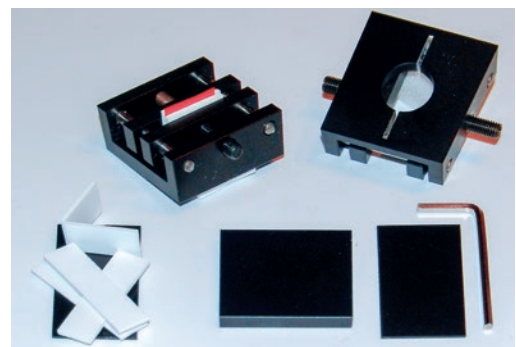
Foil Clamp II for Rotary Microtomes

The sample preparation of plastic films or any other flat samples, requires application know-how as well as high quality products. A new foil clamp will make the clamping easier. The flat design of this clamp allows the examination of samples in incident light.

Due to the request of many customers we have developed this clamp. The special requirements of industrial applications have been taken into consideration.

Working principle

- The film material is clamped into its own or specifically offered sandwich holder. Flat samples are clamped directly.
- A spacer disc (1.5 mm) is pushed under the clamping jaws of the clamp.
- The spacer can also be used as an incident slide.
- The sandwich holder will be inserted flat in the clamp (with 15 mm projection) and can be fixed.
- With the spacer the staple plan can be clamped parallel to the microtome.
- If, in addition to producing sections for transmitted light and incident investigations carried out, the sample can be analyzed in the clip immediately, without having touched the object table in height, or align the sample plan.
- A central bore also allows mixed light using transmitted light.
- The new central guide slot is the direct connection of film, paper or plastic plates in the jaws!



Specification

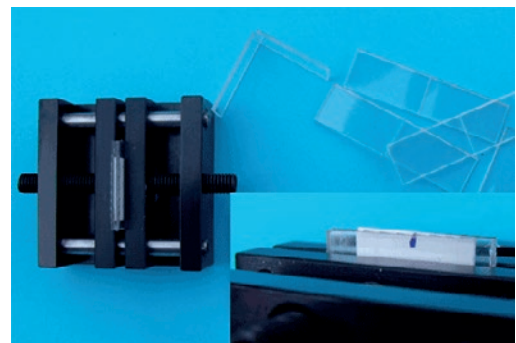
Foil Clamp anodized (39x39x15mm) for all kinds of flat samples. Particularly flat design. Suitable for sandwich holder (20x10mm). Central bore for transmitted light and guide slot.

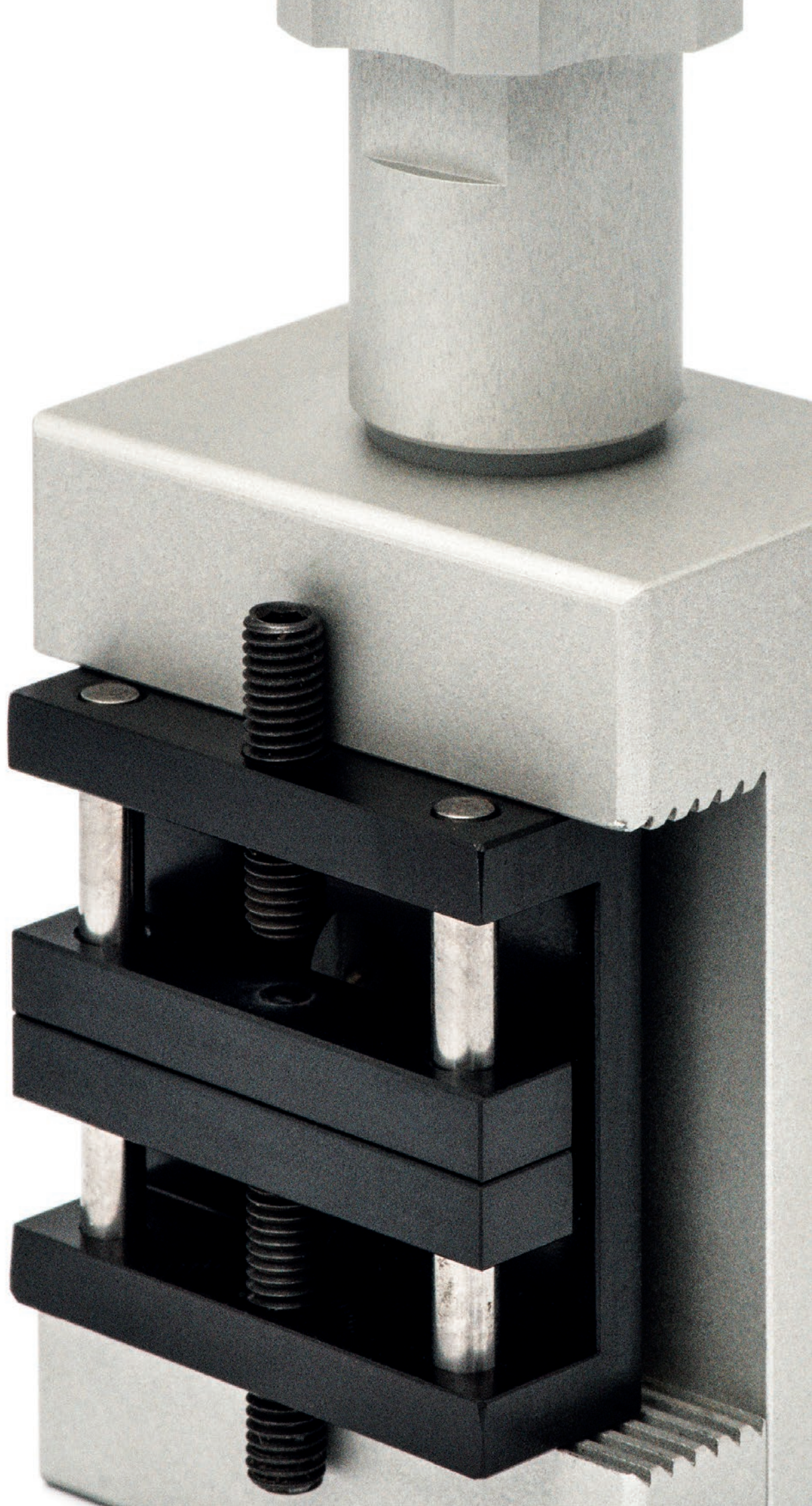
Spacer (5mm) for application to the microtome specimen clamp, allows planes to complete the film clip.

Washer 1,5mm for easy orientation of the sandwich holder and applying as an incident slide.

10 pcs. **Sandwich holder** (white or clear)

Allen Key





Cryostats

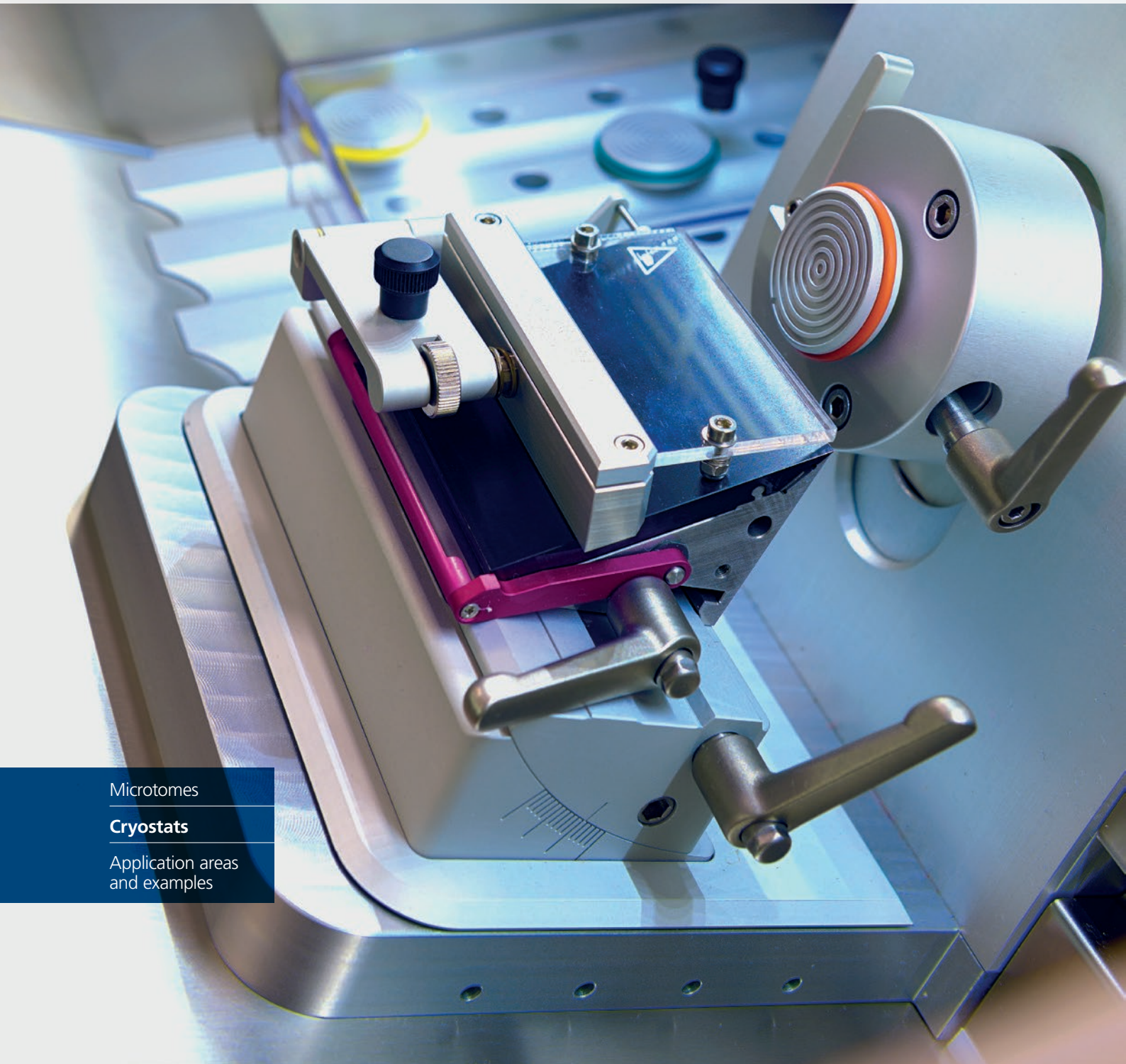
SLEE has more than 50 years of experience in the development, production and sales of cryostats. The application for all very smooth industrial materials requires cryostats sections technology. Already with the development of the worldwide first cryostat SLEE has achieved an excellent reputation and since then has continuously expanded a leading market position.

The cryostats produced by SLEE offer best ergonomic features and efficiency: The floor-standing units MEV and MNT comprise a spacious cooling chamber with easy-to-operate electronic control and automatic defrost function. The heart of all these units is the precise rotary microtome with well-proven SLEE quality.

Microtomes

Cryostats

Application areas
and examples



Overview



MEV	MNT
Art. No. 10150000	Art. No. 10160000
Floorstanding semi-automatic ECO-cryostat	Floorstanding fully-automatic high-end cryostat
Exchangeable standard knife or disposable blade holder	Exchangeable standard knife or disposable blade holder
Motor trimming function, 0 – 300 µm	Motor trimming function, 0 – 300 µm
Motor coarse advance in 2 speeds	Variable cutting speed
Object orientation	Object orientation
Actively cooled 24 position specimen storage	Actively cooled 24 position specimen storage
Power saving mode	Power saving mode
Automatic motor retraction	Automatic motor retraction
Options	
specimen cooling (-45 °C)	specimen cooling (-45 °C)
motorized	
Specifications	
760 D x 680 W x 1110 H	760 D x 750 W x 1110 H
127 kg	154 kg
Cutting thickness 0.5 – 100 µm	Cutting thickness 0.5 – 100 µm
Trimming thickness variable 0.5 – 300 µm	Trimming thickness variable 0.5 – 300 µm
Horizontal advance 28 mm	Horizontal advance 28 mm
Vertical stroke 58 mm	Vertical stroke 58 mm
	Cutting speed variable 3 – 450 mm/sec
Specimen orientation x/y axis: 8° z axis: 360°	Specimen orientation x/y axis: 8° z axis: 360°
Specimen holders 22 and 35 mm Ø with grip protection	Specimen holders 22 and 35 mm Ø with grip protection
Cooling capacity -35 °C	Cooling capacity -35 °C



MEV

Floorstanding semi-automatic ECO cryostat

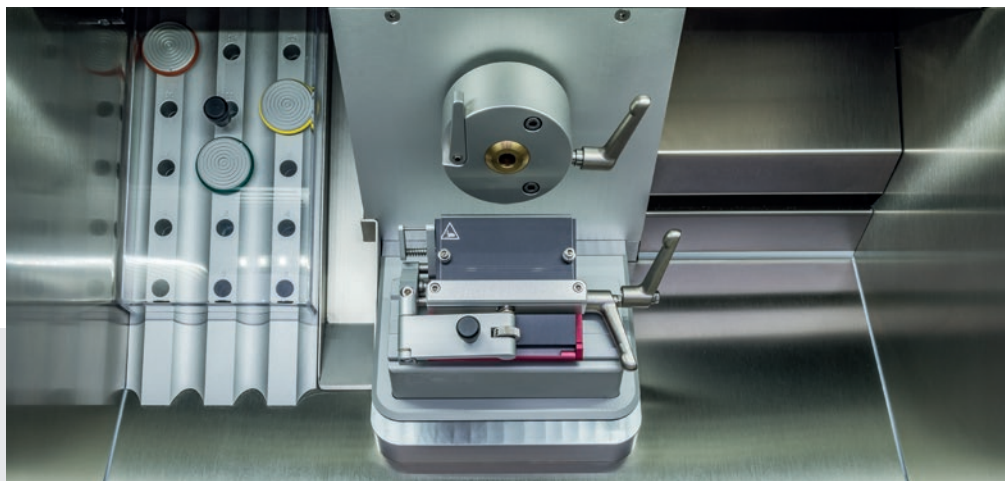
The model MEV features convenient operation and a modern rotary microtome. The space-saving design still has a large stainless steel chamber, an effective freeze bar with 24 positions and a chamber temperature to $-35\text{ }^{\circ}\text{C}$.

- Modern rotary microtome with motorized μm advance/return
- Large anti-roll plate
- Heated viewing window (glass, electrically, conductive coating, transparent)
- Intuitive electronic control panel
- Automatic defrost
- 2x Shock freezing positions (optional)
- UV-C disinfection (optional)
- Object cooling (optional)
- Storage area for 24 specimen holders

Standard Components*

Basic instrument
Semi-automatic rotary microtome
Anti-roll plate, ready to use
Object holders (5x $\text{\O} 22\text{ mm}$; 5x $\text{\O} 35\text{ mm}$)
1x Heat extractor
1x Rack for object holders (stainless steel)
Brush
1 Box of disposable blades (50 pcs.) or 1 steel knife (16 cm C-profile)
1x CryoGlue embedding medium (1x 125 ml)
1x Bottle cryostat low temperature oil
Set of allen keys
Operation manual
Mains cable

* Either standard knife holder or disposable blade holder is included in standard components



MEV Cooling chamber with semi-automatic rotary microtome

Specifications

Cryochamber temperature	0 °C to -35 °C
Section thickness setting range	0.5 – 100 µm
Section thickness selection	0.5 – 2 µm in 0.5-µm steps 2 – 20 µm in 1-µm steps 20 – 50 µm in 2-µm steps 50 – 100 µm in 5 µm steps
Trimming thickness	0.5 – 300 µm, freely programmable
Horizontal specimen advance	28 mm
Vertical specimen stroke	58 mm
Specimen retraction	0 – 200 µm; selectable on return stroke
Specimen orientation, horizontal	8°
Specimen orientation, vertical	8°
Specimen orientation, z-axis	360°
Dimensions (width x depth x height)	750 x 760 x 1110 mm
Weight without accessories	154 kg

Accessories

Standard knife holder*	#10156010
Disposable blade holder (low profile)*	#10157005
Disposable blade holder (high profile)*	#10158005
Foil clamp for cryostats	#10159011
2x Quick freezing positions	#10159000
UV-C surface disinfection	#10169000
Object cooling 230 V, 50/60 Hz	#10164000
Object cooling 115 V, 50/60 Hz	#10164200
Debris extraction system	#10167000
Section waste cloth	#30000015
Object holder (Ø 22 mm; 5 pcs.)	#30000002
Object holder (Ø 28 mm; 5 pcs.)	#30000017
Object holder (Ø 35 mm; 5 pcs.)	#30000000
Object holder (Ø 50 mm; 5 pcs.)	#30000003
Rack for object holders (stainless steel)	#31000769
Cork plate (100 pcs; Ø 20 mm)	#30001001
CryoGlue embedding medium (4x 125 ml)	#30001100
Clear-cut brush	#30001030
Anti-roll plate (disposable blade holder)	#32001050
Anti-roll plate (standard knife holder)	#32001049
Disposable blade (low profile; 50 pcs)	#28407000
Disposable blade (high profile; 50 pcs)	#28408000
Freezing spray (173 g)	#30001010

* Either standard knife holder or disposable blade holder is included in standard components

MEV 230 V, 50/60 Hz

Art. No. #10150000

MEV 115 V, 60 Hz

Art. No. #10153000



MNT

Floorstanding fully-automatic high-end cryostat

The MNT high-end cryostat is designed for histology/pathology, research and industrial applications. The instrument is equipped with a fully automatic rotary microtome with extremely high mechanical stability, tolerance-free roller guides and state of the art electronic control.

- Modern rotary microtome with motorized μm advance/return
- Cutting motor with adjustable speed
- Large anti-roll plate
- Heated viewing window (glass, electrically conductive coating, transparent)
- Intuitive control panel
- Automatic defrost
- Storage area for 24 specimen holders
- 2x Shock freezing positions (optional)
- UV-C disinfection (optional)
- Object cooling (optional)

Standard Components

Basic instrument

Semi-automatic rotary microtome

Anti-roll plate, ready to use

Object holders
(5x \varnothing 22 mm; 5x \varnothing 35 mm)

1x Heat extractor

1x Rack for object holders (stainless steel)

Brush

1 Box of disposable blades (50 pcs.)
or 1 steel knife (16 cm C-profile)

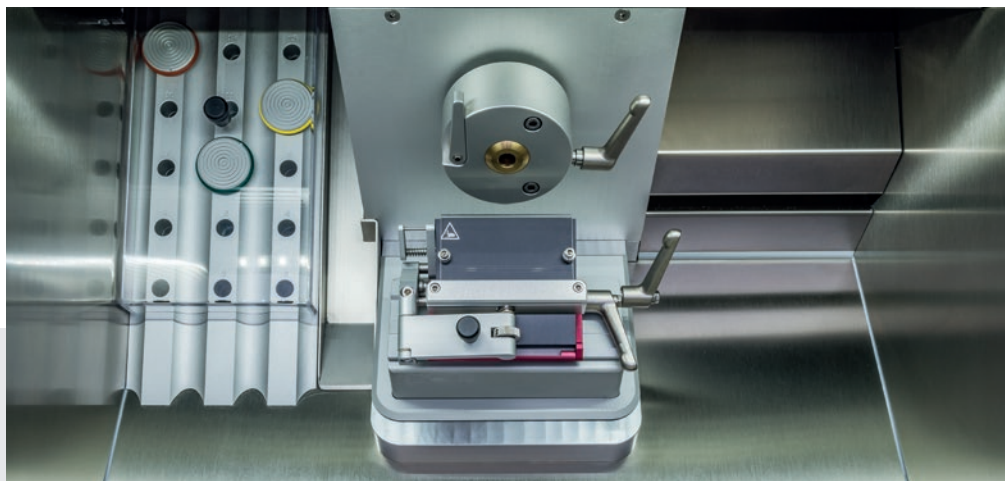
1x CryoGlue embedding medium (1x 125 ml)

1x Bottle cryostat low temperature oil

Set of allen keys

Operation manual

Mains cable



MNT Cooling chamber with fully automatic rotary microtome

Specifications

Cryochamber temperature	0 °C to -35 °C
Section thickness setting range	0.5 – 100 µm
Section thickness selection	0.5 – 2 µm in 0.5-µm steps 2 – 20 µm in 1-µm steps 20 – 50 µm in 2-µm steps 50 – 100 µm in 5-µm steps
Trimming thickness	0.5 – 300 µm, freely programmable
Horizontal specimen advance	28 mm
Vertical specimen stroke	58 mm
Sectioning speed	20 – 300 mm/s, selectable
Specimen retraction	0 – 200 µm; selectable on return stroke
Specimen orientation, horizontal	8°
Specimen orientation, vertical	8°
Specimen orientation, z-axis	360°
Dimensions (width x depth x height)	750 x 760 x 1110 mm
Weight without accessories	154 kg

Accessories

Standard knife holder	#10156010
Disposable blade holder (low profile)	#10157005
Disposable blade holder (high profile)	#10158005
Foil clamp for cryostats	#10159011
2x Quick freezing positions	#10159000
UV-C surface disinfection	#10169000
Object cooling 230 V, 50/60 Hz	#10164000
Object cooling 115 V, 50/60 Hz	#10164200
Debris extraction system	#10167000
Section waste cloth	#30000015
Object holder (Ø 22 mm; 5 pcs.)	#30000002
Object holder (Ø 28 mm; 5 pcs.)	#30000017
Object holder (Ø 35 mm; 5 pcs.)	#30000000
Object holder (Ø 50 mm; 5 pcs.)	#30000003
Rack for object holders (stainless steel)	#31000769
Cork plate (100 pcs; Ø 20 mm)	#30001001
CryoGlue embedding medium (4x 125 ml)	#30001100
Clear-cut brush	#30001030
Anti-roll plate (disposable blade holder)	#32001050
Anti-roll plate (standard knife holder)	#32001049
Disposable blade (low profile; 50 pcs.)	#28407000
Disposable blade (high profile; 50 pcs.)	#28408000
Freezing spray (173 g)	#30001010

MNT 230 V, 50/60 Hz

Art. No. #10160000

MNT 115 V, 60 Hz

Art. No. #10162000

Areas and examples of application for the use of rotary microtomes

Modular system solutions – Quality assurance for the film processing industry

The adherence of layer thicknesses or impeccable terminal contacts decisively determine the quality of films in all areas of application. The fast and inexpensive determination of this information is now possible, by the connection of coordinated modular systems.



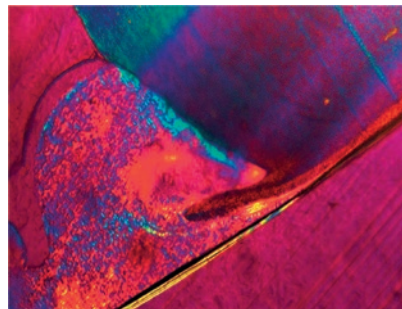
Recommended product CUT 4062

Packaging and Storage Techniques

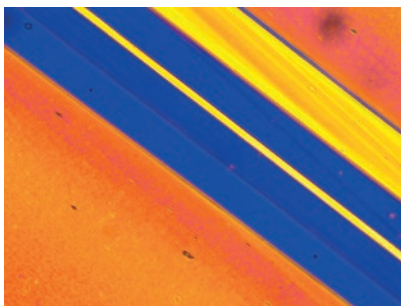
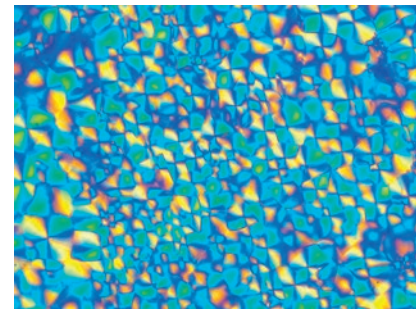
- Paper and cardboard
- Automotive
 - Fuel tanks
- Plastic films and -cups
 - Food
 - Pharmaceutical products
 - Medical disposable plastic materials
 - Food plastic bottles



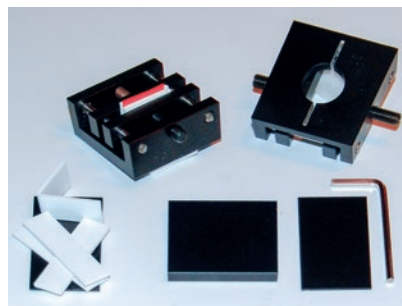
Food Weld



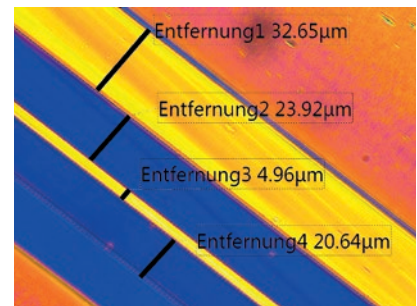
Observation of food weld quality 20 µm thin section,
polarization contrast microscopy



Food film



Foil clamp for fast preparation



Measurement of layer thickness

Modular system solutions – Quality assurance for the film and coating processing industry

The adherence of layer thicknesses or impeccable terminal contacts decisively determine the quality of films in all areas of application. The fast and inexpensive determination of this information is now possible, by the connection of coordinated modular systems.



Recommended product CUT 5062

Packaging and Storage Techniques

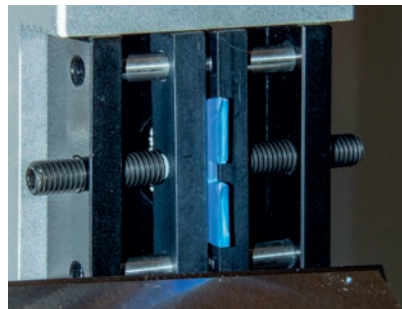
- Paper and cardboard
- Automotive
 - Fuel tanks
- Plastic films and -cups
 - Food
 - Pharmaceutical products
 - Medical disposable plastic materials
 - Food plastic bottles

Coatings

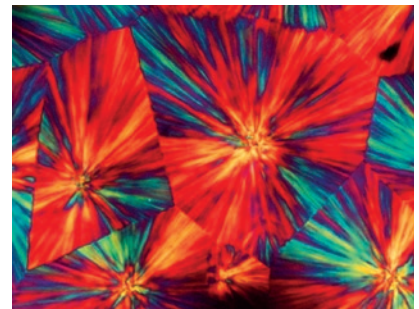
- Automotive
 - Coatings metal – plastic
 - Paint plastic – plastic



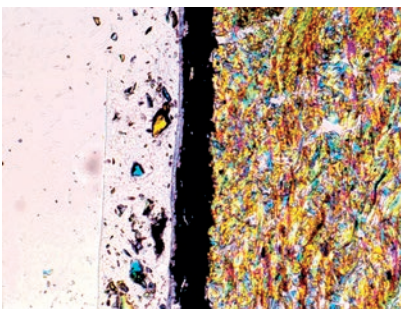
Cap: Shower Gel



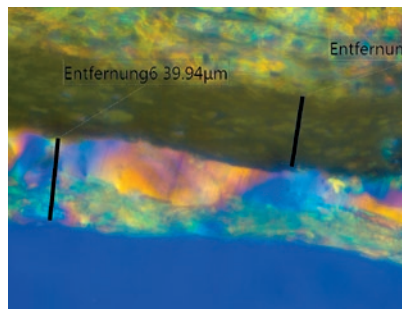
Directly clamping of the specimen



Structural analysis of Polypropylene spherulites, 12 μm thin section, transmitted light polarization contrast



Multi coatings of wood-plastic-minerals laminate, 15 μm thin section, transmitted polarization contrast.



Areas and examples of application for the use of rotary microtomes

Modular system solutions – Quality assurance for all processing industry and research and development institutions

Process:

- Injection Molding Technology
- Composites
- Extrusion Technology
- Laminating
- Coating Technology

Materials:

- Thermoplastic.
- Plastics
- Cellulose (paper)
- Natural fibers
- Metals (non-ferrous metals, aluminum)



Recommended product CUT 6062

Packaging and Storage Techniques

- Paper and cardboard
- Automotive
 - Fuel tanks
- Plastic films and -cups
 - Food
 - Pharmaceutical products
 - Medical disposable plastic materials
 - Food plastic bottles

Coatings

- Automotive
 - Coatings metal – plastic
 - Paint plastic – plastic

Plastic Joining Technology

- Automotive

Plumbing

- Plastic pipes

Electronics

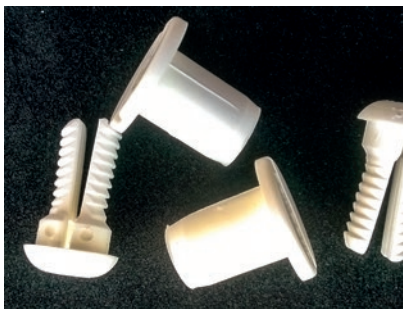
Cables and Wires

Machine Manufacturer

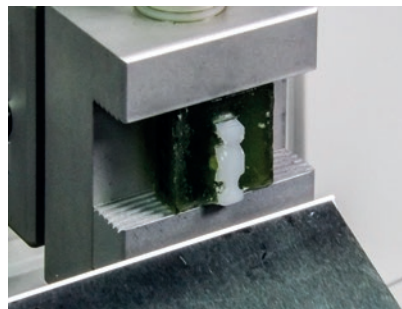
- Extruder machines
- Injection molding machines

Composites

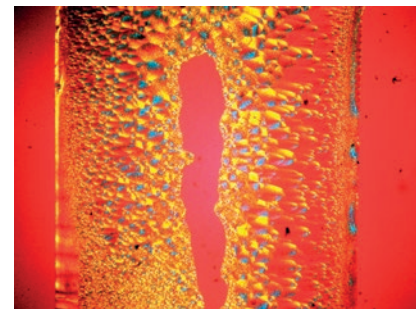
- CFRP and GRP



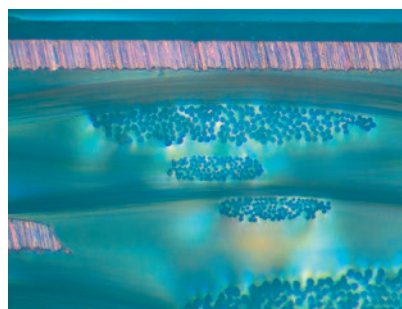
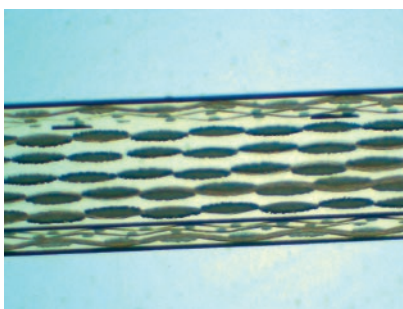
Lightweight direct fasteners



Base embedding specimen



Polyamide structure with shrink hole, 20µm thin sections, transmitted polarization contrast



Composite specimen (Circuit board). 20 µm thin sections, transmitted polarization contrast and surface preparation with copper material



Rotary microtome CUT 5062 with industrial equipment for automotive application

STANDARD Video Viewing Device

for Microtomy Target Preparation

Working principle

- In this zoom system the magnification on the working distance is adjusted. You can reach 150mm with a factor 2.0x, with 50mm 9,0x, (at a 5 "monitor).
- With powerful LED lighting a distance of 150mm is also achievable.
- The integrated CMOS sensor (720x576 pixels) transmits the live image on a 5 "LCD monitor.
- The tripod with flexible arm allows the quick and easy positioning.

Sample Specification

- Zoom lens with CMOS camera, AA: 50-150mm, VV: 2.0x 9,0x 105mm working distance.
- Integrated illumination (8 LEDs).
- Universal stand with flexible arm (300mm) for accurate positioning.
- 5 "LCD monitor with FlexArm holder (300mm).

The combination of flexibility and competence allows us to fulfill individual requests and customer solutions.



PRO Video Viewing Device

for Microtomy Target Preparation

The microtomy preparation has proven its worth in industrial applications. However, the positioning of the samples is difficult and time-consuming since the free view is only possible on the surface. However, the sample must be viewed continuously from the side, to ensure that the holes, inclusions, surface structures or specks are precisely cross-sectioned. We have the right solution for this application.

Working principle

- A high-quality optical zoom system is placed on your microtome with our new space-saving swivel arm stand. You select the desired distance (182 / 105 / 94mm) and get a magnification range between (0.14 – 4.5), without any distance changes.
- They illuminate the sample with the new dimmable LED spot lighting with flexible arm. On request also with two LED lights.
- You can individually attach your analog or digital camera.

Sample Specification

- Zoom optics MEIJI Unimac MS series (0:53 to 3.38x), with 105mm working distance.
- Conversion Lens 0.75x.
- Universal stand with focusing drive for precise positioning.
- SCHOTT LED lightning EasyLED spot with holder on the tripod and dimming.

For more detailed applications information, contact us.



SLEE medical GmbH

Lise-Meitner-Strasse 11
55129 Mainz · Germany

Tel. +49 6131 95871-0
Fax +49 6131 95871-722

mail@slee.de
www.slee.de

SLEE The logo for SLEE medical features the word "SLEE" in a large, bold, blue sans-serif font. To its right, the word "medical" is written in a smaller, white sans-serif font, centered within a solid blue rectangular background.